

NORTHEAST GOLF

FARM NECK A SEASIDE SYMPHONY

MORE VIEWS. MORE OPTIONS.
MORE REASONS TO MAKE THE TRIP.

BEST IN
 **Golf Course
Living**

- ✓ Two 18-hole championship courses
- ✓ 176 beautiful guest rooms
- ✓ 4 restaurants
- ✓ Spa
- ✓ Marina
- ✓ Pickleball and tennis
- ✓ Fitness center
- ✓ Bike paths
- ✓ Walking trails
- ✓ 30,000 square feet of meeting space

Learn More



Book Now:



Experience World-Class Golf From **PARADISE**

Escape to the stunning island of Bermuda for the Butterfield Bermuda Championship, where PGA TOUR action meets breathtaking ocean views. From November 13th to 16th, watch top golfers compete on the picturesque Port Royal Golf Course, known for its dramatic coastal cliffs and world-famous 16th hole.

 **BUTTERFIELD
BERMUDA
CHAMPIONSHIP**

November 13-16
**PORT ROYAL
GOLF COURSE**

OFFICIAL PRO-AM EXPERIENCES **NOVEMBER 11-12**

INCLUDES



**HOTEL
ACCOMMODATIONS**



**PLAY WITH
PGA TOUR
PROFESSIONALS**



**PORT ROYAL
GOLF COURSE
FOURSOME**



**TUCKER'S
POINT BERMUDA
FOURSOME**



**ISLAND
TRANSPORTATION**

 **FedEx** 
—FALL—
BERMUDA
GoToBermuda.com

PRICES START AT
\$23,000
PER FOURSOME



POMPANO BEACH BERMUDA GOLF CLASSIC FALL COUPLES EVENT – LATE OCTOBER

Sponsored by Goslings Rum



This fall, the Pompano Beach Club will be hosting their Couples
Late October Golf Classic from
October 26 – November 1, 2025.
Tournament slots will sell out quickly.

The event consists of four individual tournament rounds, with golf to take place at three of Bermuda's top courses – Port Royal, Tucker's Point and Belmont Hills. All participants will be split into four different flights (the couples with the Lowes combined net handicaps will be matched up against each other in the "Dark n' Stormy flight," the couples with the next lowest combined net handicaps will be matched up against each other in the "Rum Swizzle flight," the couples with the third lowest combined net handicaps will be in the "Yellowbird flight" and all remaining couples will be in the "Pina Colada flight." The flights are named after four of Bermuda's most popular 19th hole cocktails!



Pompano Beach Club
Bermuda

TOURNAMENT PACKAGES

**Choice of accommodations (based upon space availability):*

- \$4,302/couple for a partial ocean view king suite
- \$4,426/couple for an ocean view superior king
- \$4,488/couple for an ocean view king suite
- \$4,736/couple for an ocean front deluxe king



Call To Reserve Your Spot Today 800.343.4155

www.pompanobeachclub.com

ready For your next course?



Named New Hampshire's "#1 Public Course" since 2009 by *Golfweek* magazine, Omni Mount Washington Resort & Spa offers a beautiful setting to test even the most experienced golfer. After your round, enjoy world-class dining, an award-winning spa and endless views from your private balcony in the new Presidential Wing guest rooms.

Join us for our Bretton Woods Memorial Golf Tournament June 8, and help fight food insecurity through our "Say Goodnight to Hunger" campaign.

OMNI
MOUNT WASHINGTON

[OMNIHOTELS.COM/MOUNTWASHINGTON](https://omnihotels.com/mountwashington)

TEE-TIMES: 603.278.4653 | LODGING: 800.843.6664

NORTHEAST[®] GOLF

COVER
STORY

12 Farm Neck, A Seaside Symphony

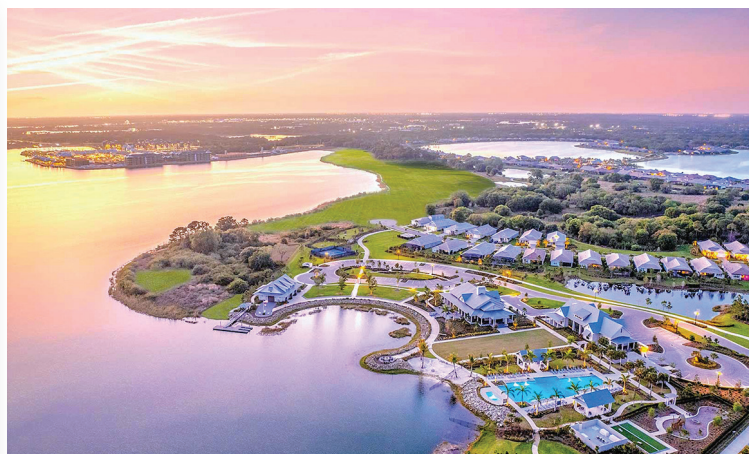
Farm Neck — A masterful renovation project brings cohesion, playability, and natural beauty to this beloved Vineyard course.
by Sean Melia

OFF COURSE, ON COURT

38

ON TREND

Nike
Pickleball
Camps



41

COMMUNITIES

Best in Golf
Course Living

by Timothy Branco



22

DESTINATIONS

Costa Rica

by Alice & Danny Scott



30

TEE 2 TABLE

The Shattuck

by Myles Murray

Golf Realities:

Golf's evolution over 60+ Years

It is no secret that golf technology has advanced the game of golf over the last 65 years. Golf clubs are designed better, golf balls not only fly farther but are designed to minimize mistakes and perform better. Courses are better than ever; teaching and game improvement technology has reached new heights in providing better statistics and more ways to improve than ever. So, the big question is, what does it all mean.

In 1965 Jack Niclaus won the Masters posting a four-round score of 271, -17 under par with a 67.75 stroke average with a MacGregor golf ball that had numerous flight issues. In 1963 he won the long drive contest at the PGA Championship, driving that flawed MacGregor ball 341 yards. In 1965 Gary Player won the Australian Open with a 264 four-round score, -28 under par with a 66-stroke average. In the 60's PGA Tour Players at the top of their game carried a 69-stroke average for the year.

In the last 10 years with all the new technology in equipment and training, the top PGA Tour players stroke average has been around 69, pretty much the same as back in the 60's. The exception years are Tiger Woods from 1999-2007 and Scottie Scheffler in 2023 /2024, who both had a stroke average of less than 69. It is possible that the key ingredient in scoring in professional golf has less to do with the gear and more to do with raw talent and mental toughness, the answer seems to be yes!

The average male avid golfer in 1965 had a handicap of 12 -15, The average male avid golfer in 2025 carries a 12-15 Handicap index despite all



"It is possible that ... scoring ... has ... more to do with raw talent and mental toughness ..."



advancements, ironic but true!

Conclusion: Work on your mental Golf Game!

Timothy R. Branco

*Timothy R. Branco, Editor
Northeast Golf*

Submit Your News & More at:
www.Northeast.Golf/Submit

NORTHEAST² GOLF

Editor

Timothy R. Branco
tim@nepubinc.com

Creative Director

Katrina T. Lallier

Editorial

Timothy Branco
David DeSmith
Michaela Jaye
Paul Mignosa
Sean Melia
John Molari
Myles Murray
Nick Gernt
Jack Ross
Greg Sampson
Alice Scott
Danny Scott

Published by:



Formerly New England dot Media
& New England Publishing Group

CEO/Managing Partner

Richard Castiglione
rich@hglmedia.com

CMO/Managing Partner

Greg Sampson
greg@hglmedia.com

Customer Service

Michaela Sampson
michaela@hglmedia.com

For Editorial & Advertising Resources:

Editorial: 774.930.1623 - Tim Branco
Advertising: 757.621.7494 - Greg Sampson
Shows: 508.942.7340 - Rich Castiglione

© 2025 Home Golf Lifestyle Media LLC.

Reproduction without permission is prohibited. The articles appearing within this publication reflect the opinion of their respective authors and not necessarily those of the publisher.



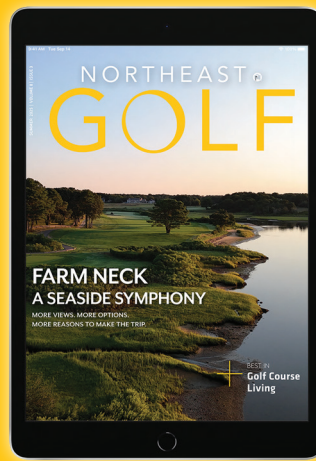
JOIN THE 2025

NORTHEAST GOLF CLUB

ONLY \$65
PER YEAR

SAVE THOUSANDS ON GOLF
& INCLUDES GOLF SHOW TICKET!

Become a member at
NortheastGolf.Club Today!



EXCITING NEWS!

The new and improved digital format for *Northeast Golf* magazine is here! This user-friendly, robust digital platform is packed with new enhancements you'll love, including:

- Immediate, password-free access to each new issue via a bimonthly email notification; there's no app to download and no login required
- A mobile-optimized option that can be easily read on a smartphone — but can be enjoyed in its original format on a desktop or laptop computer
- A continually updated library of every issue we've published since Spring 2018
- Videos to accompany selected articles and departments



- An audio enhancement that will read each article to you with the simple click of an icon located at the top right corner of the article introduction
- One-click reading on up to five devices

We appreciate your continued support and hope you enjoy this new format.
SUBSCRIBE FREE at www.northeast.golf

NORTHEAST² GOLF

The Carolina Golf Experience at Hilton Head Island

Oct 9 - 13, 2025



Three Rounds of Golf at Palmetto Dunes



Beachfront Paradise , Starting at \$1,575 per person



Transfers, Welcome Event, & More Included



Don't Wait for a Great Experience,
Join One! Book Today at
Golfinspired.com/northeast-golf

LIFE SPECTACULAR



Baha Mar's Jack Nicklaus Signature Golf Course, Royal Blue, is the top-ranked course in the Bahamas and features 18 holes unfolding over a gorgeous naturally evolving landscape. After your round, Baha Mar offers the perfect balance of spectacular experiences with luxurious relaxation in the pure Caribbean sunshine. Exquisite dining from world-renowned chefs, lush tropical pools, a pristine white sand beach and our new 15-acre luxury water park Baha Bay await you.



BAHAMAR.COM



BAHAMAR.COM



A LUXURY OF CHOICE

GRAND | HYATT
BAHA MAR

SLS
BAHA MAR

ROSEWOOD
BAHA MAR

BAHA BAY WATER PARK | CASINO | ROYAL BLUE GOLF | 45+ RESTAURANTS & LOUNGES | RACQUET CLUB | ESPA | RESIDENCES

YOUR ULTIMATE GOLF EXPERIENCE

is closer than you think.



Getting to BOYNE Golf has never been easier. Whether you're driving or flying into either the nearby Traverse City (TVC) from 19 U.S. cities — or our newly-renovated private 5200' airport at Boyne Mountain, our 11 magnificent courses are closer than you think.

Call 855.428.7447 - now booking through 2026!

MICHIGAN'S
MAGNIFICENT

11

BOYNE
GOLF

BoyneGolf.com



Sunday River
Golf Club

Mountain golf at its peak.

SundayRiver.com/Golf

PLAY & STAY

MAINE'S PREMIER
GOLF DESTINATION

Save big when you
Play & Stay
with us



Explore rates & book lodging at Sugarloaf.com



FARM NECK A SEASIDE SYMPHONY

BY SEAN MELIA



More views. More options. More reasons to make the trip.

Since opening in 1979, Farm Neck Golf Club on Martha's Vineyard has drawn golfers to its scenic, seaside layout. On a sunny summer day, locals might rub shoulders with vacation revelers like the Obamas.

While Farm Neck might feel like a universe away from people on the mainland, it's a quick 35-minute ferry ride from Woods Hole in Massachusetts. A taxi to the course is another ten minutes. The possibility of a day trip to play this gem should be on your short list of summer "To Dos," especially after a significant renovation.

Over the last two winters, golf course architect Mark Mungeam, Farm Neck Superintendent Andrew Nisbet, and MasGolf Construction owner Matt Staffieri have worked hard to usher in a new era at Farm Neck GC.

On Memorial Day weekend, Farm Neck pulled back the curtain and showcased its renovated back nine, completing a two-phase project that started in the fall of 2023.

The renovation improved tee boxes, bunkers, and green surrounds with the goal of making the front and back nine more cohesive and the course more playable for all levels of golfers.

A project of this scope on an island requires incredible planning, flexibility, and imagination.

Building a more cohesive course

"The goal was to unify the nines and make them more consistent in character." - Mark Mungeam

Geoffrey Cornish and Bill Robinson worked together to design the front nine and Patrick Mulligan designed the back nine. That dynamic created a course that felt disconnected when it opened in 1979. Mungeam, Nisbet, and Staffieri wanted to give visitors the feeling of playing one cohesive course.

How does one take two disparate nines and make them feel unified? One way is to connect it more with the course's surroundings, give it one consistent sense of place. That meant opening up views and vistas through tree removal.

FARM NECK GOLF CLUB
Oak Bluffs, MA | (508) 693-3057
www.farmneck.net

Another way is to notice the differences in difficulty and aesthetics. Every architect has a different vision. Imagine Michelangelo handing his brushes to another artist to complete the Sistine Chapel.

Green shapes and designs can look different. Architects implement challenge and risk/reward shots differently. So Mungeam, Nisbet, and Staffieri tried to smooth out the edges to unite the nines. Staffieri's role was a big one, as he shaped the land and could draw attention to different features with the skillful scrape of his bulldozer.

"The big thing that I hear is the golf has a theme now," Nisbet said.

Highlighting the natural surroundings

"We wanted to tie in the golf course into the existing features and make it look like the beach just intertwines with the golf course and the bunkers." - Andrew Nisbet

Golf and coastline go together like Simon and Garfunkel, a seamless partnership that brings joy, awe, and a melody that will stay in your head for days. At Farm Neck, the views are superb and appear in a lovely cadence throughout the round. A golfer isn't blitzed with stunning views early in the round only to travel inland and never catch a second or third view of the water.

At Farm Neck, water views greet players as they transition from the second green to third tee. The downhill tee shot is a thrill, as different textures - trees, bunkers, grass, and water - tickle the senses.

Over the course of hole Nos. 3-8, the rolling land and the routing provide eye-catching views and excellent golf.

The third and fifth holes were once separated by a copse of trees that not only blocked the views but also felt out of place. Mark Mungeam replaced the trees with a series of rugged bunkers that can partly be seen from the third tee box and intimidate players on the short fifth hole.

"We tried to have those bunkers and tees and green surrounds mimic that rugged look," Nisbet said.

Those features also create strategic value as players have to consider the penalty of playing it safe with a long iron down the left side of the hole. Even with the water at the players' backs on the fifth, the renovation has brought life

to a hole that might not have stirred much imagination.

"We wanted to improve how the course fit in with nature, with the natural beauty of the site and to better see the ocean views," Mungeam said.

The views on the 7th and 8th holes close out the front nine's eye candy, but there's more on the back nine, particularly on hole Nos. 14 and 15. The 14th plays right to the edge of the water. This spot on the course was picked for golf long before 1980 when Farm Neck opened. Cottage City CC had a few holes that played over this land back in the late 19th century.

Over time, trees have been culled from this section of the property to open up vistas and views of Nantucket Sound and Sengekontacket Pond.

"We really just opened up the golf course to its coastal environment and tried to make it mimic what you're seeing on the coastline in front of you, Nisbet said.

Making Farm Neck more playable

"We try to create an A, B, and C option off the tee. It's just a lot more fun. Now there's more options with shot selection." - Mark Mungeam

Interesting and engaging golf is all about options. These dynamics allow a player to slowly pull back the layers of the onion and learn a bit more on every return trip to a golf course.

Standing on a tee box with a few clubs while discussing the options for a shot with playing partners engages everyone.

For other players, they want space off the tee because their skill level might require them to hit a driver from their tee box on every hole.

Finding ways to engage players on every hole starts with the tee shot, and it continues to the green complexes.

A yawning lion's mouth bunker guards the front of the 14th green. Mungeam decided to cut the rough around the bunker so players could hit various shots, including putts, onto the green. The short grass benefits all players because a more skilled player has options beyond chopping a 60-degree wedge out of the rough.



The 15th hole is the only one where the team renovated an entire green. Some greens were touched up and resized, but the 15th needed more drastic work to make it playable. With the prevailing wind coming off the left, a green that slopes left to right towards a water hazard felt too penal. Mungeam removed a bunker guarding the left side of the hole and added more short grass, which, in essence, extended the putting surface. The green was softened to allow for more pinnable areas and to limit balls rolling off the green.

Planning on an island

"You really only have one main mode of transportation to get material here — by boat ... you have to really get out ahead of it." - Andrew Nisbet.

An undertaking as big as this one at Farm Neck is hard enough with easy access to materials, but Nisbet, Mungeam, and Staffieri had the added complication of working on an island. Mungeam would travel over once a week to oversee the project and Staffieri would spend 2-3 days a week on the property shaping and digging. Nisbet lives on the island, and was overseeing a lot of the nitty-gritty daily details, which were plentiful.

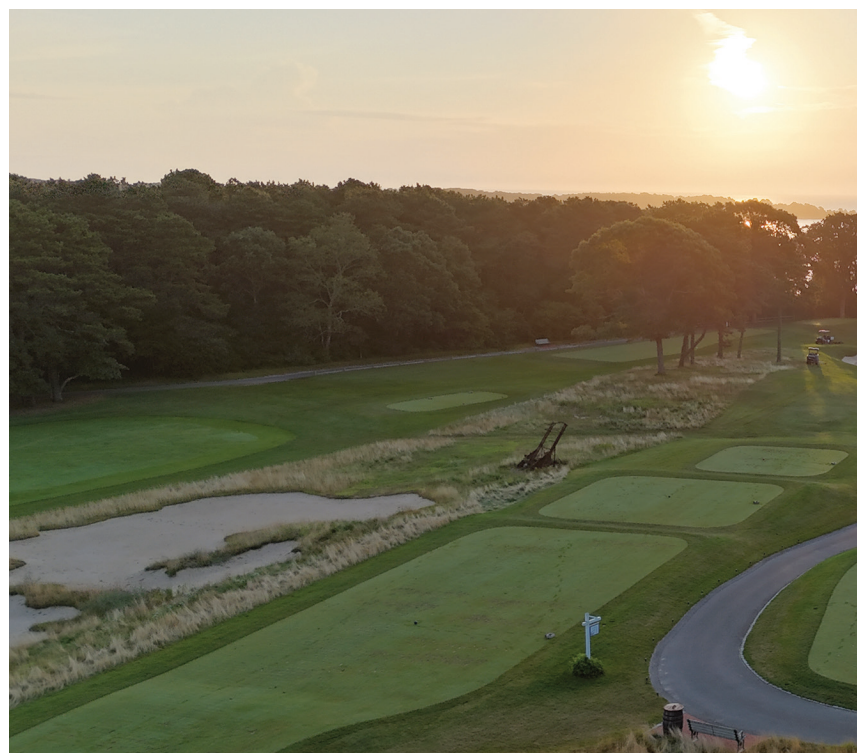
It took great coordination between the three men to know what they would want and when. Some materials were time sensitive. Sod doesn't live too long sitting around on a barge or truck. In some cases, the orders were made weeks or months in advance.

Nisbet's time at Nantucket Golf Club, where he worked with Staffieri on a bunker project, helped prepare him for this work at Farm Neck. His relationship with Ralph Pack-er, who runs the only barge that delivers to Martha's Vine-yard was also pivotal.

"When you're ordering anywhere between 1000-2000 tons of material, it's just not financially feasible to book a truck, put that truck get on the steam ship, and then drive over to Farm Neck. The freight is just astronomical, so you have to go by the barge," Nisbet said.

Nisbet, Mungeam, and Staffieri all have their specialties, but they worked well together to complete this project over two winters.

"It was a joy to go and work there with them. Andrew always had a smile on his face," Mungeam said. "We had great lunches together where we would review where we were at."



Those lunches were a chance to connect after a morning out on the property, and they were important given the pace of the project and the limited in-person access the three men had to each other.

For Staffieri, the details matter. It was normal for him to obsess over a small feature and pull in Nisbet and Mungeam for a discussion. Mungeam and Staffieri wandered the 17th green for 15 minutes, trying to perfect one small section just over the back edge. They needed it to look great from the fairway, play well, fit into the surroundings, and move water efficiently.

"We really just valued each other's opinions and worked through the project," Nisbet said.

Mungeam works with all sorts of courses, and he very much appreciated his time at Farm Neck. "We were able to collaborate at Farm Neck a little bit more than what I normally do, he said. "It was really a lot of fun to work with them."

Nisbet, Mungeam, and Staffieri took a very good golf course and made it more playable, more cohesive, and more connected with nature. Few public courses can claim ocean views, high-level design, and a walkable layout — Farm Neck can now claim all three, and more confidently than ever. It's certain to attract visitors and will leave many wanting to return for another round.



An aerial photograph of a golf course under a bright blue sky with scattered white clouds. In the foreground, a large, well-manicured green fairway with distinct mowed stripes curves through the landscape. To the left, a small sand trap is visible. In the middle ground, another green and sand trap are situated. The background features a large, white clubhouse with a dark roof and multiple windows, nestled among a dense forest of tall, dark green pine trees.

The Renovation *Renaissance*

A Look at Golf Course Makeovers in New England

BY SEAN MELIA

The International

COURSES & CLUBS

RENOVATION RENAISSANCE

WITH GOLF'S EVER-GROWING POPULARITY,

public and private courses are finding ways to make improvements to their golf courses for a variety of reasons. Some want to bring the design up to the modern standards, while others want to return a course to its roots after years of losing touch with its past.

Here are some courses in the Northeast that have undergone renovations, redesigns, resorations, and reimaginings.

Feel free to reach out to us with other projects that are underway or are in the planning phases.

CC of New Bedford New Bedford, MA

Jon Sanford has overseen the major work that is being done at CC of New Bedford. Originally designed by Willie Park Jr., CC of New Bedford will look different when it opens in late June. Set on a small parcel of land, CC of New Bedford packs a punch with variety of hole lengths, tricky greens, and blind shots.

The work at CC of New Bedford is extensive. Each green is being tweaked and expanded to allow for new pinnable locations. Bunkers have been added in some places and removed in others. Short grass will be in play around many of the greens to allow for more options. Players can putt or use their imagination with various clubs to bump-and-run or fly the ball near the hole.

Drainage is also being improved at CC of New Bedford both in the fairways and under the greens. Last year, Sanford used the 7th hole as a rehearsal for the rest of the course, improving the tee boxes and bunkers while making massive changes to the green so it is more puttable as the original design had a severe back to front slope.

The private course is slated to reopen in June.

www.ccnb.golf

Eastward Ho! Chatham, MA

This Cape Cod diamond sits on an incredible piece of land with stunning water views and superb golf. The course changes nearly every day with shifting winds and variable temperatures.

Kyle Franz just wrapped up eight months of work at Eastward Ho! and the course reopened for play in the middle of June. The goal of the work was to improve drainage, tee boxes, and bunkers while opening up some playing corridors to make the course more playable for a wide variety of skill levels.

www.eastwardho.org

The International: Pines Course Bolton, MA

The 1954 Geoffrey Cornish design had wowed golfers for more than half a century in Bolton, Mass. It was the longest course in the world when it opened, measuring 8,000+ yards. It was highlighted by massive green complexes, tree-lined fairways, and tight corridors on rolling Central Massachusetts land.

Over the last 18 months, the team of Bill Coore and Ben Crenshaw have built a new course on top of Cornish's resign. They are calling it a reimagining.

There are hints of the original design, with some similar playing corridors and green sites. But there are also spots on the course that feel completely new. The routing has been altered, shifting from a brawny beast to a more approachable course with shorter holes and an easier walk for those who enjoy experiencing a course on foot.

Coore and Crenshaw are known for their understated design philosophy, and The Pines hits on that notion. Its rustic look makes it feel as if their rendition of the course has been there for decades. One feature that stands out is the sand quarry they dug up, which sits near the 13th tee box and offers a dramatic visual.

The closing stretch is dynamite, and the 16th could be the crown jewel. An exceptional short par 3 in the shadow of the clubhouse requires accuracy and nerve to hit the small green that is guarded by a mammoth bunker that could destroy many a good round. The 17th green and 18th hole



COURSES & CLUBS

RENOVATION RENAISSANCE



Owl's Nest Vineyard Course

offer a glimpse into the past; the approach into the 17th green and the entire 18th hole sits on similar ground as the original Cornish design.

The Pines is the second Coore and Crenshaw course in Massachusetts. Old Sandwich opened in 2004 to critical acclaim and it's hard to imagine The Pines won't receive accolades from golfers of all abilities.

The International has 36 holes. The Pines Course offers a lovely contrast to The Oaks. The Oaks, a Tom Fazio design, was touched up by Tripp Davis in 2021 with new bunkers, drainage, and tee boxes along with added length in 2022.

www.theinternational.com

Owl's Nest: Vineyard Course - Ashland, NH

The Owl's Nest resort has expanded its golf offerings. After purchasing White Mountain CC, they have 36 holes for visitors. The second course has been renamed The Vineyard Course, and a new sign at the entrance isn't all they've done. The extensive project that has lasted two years includes new tee boxes, reconstruction of holes, tree removal, bunker removal, and re-grassing. Land that had been choked out by trees will be opened up to accentuate the views and make the golf more enjoyable. The fourth and ninth holes were altered significantly, and while bunkers were removed, they are also adding 55 new bunkers.

In addition, there will be a new clubhouse, restaurant, and pro shop to make the stay more enjoyable and fit in with the other amenities at Owl's Nest. The course will live up to its Vineyard name, too. The course will border a new vineyard that will become the 31st in the registered winery in New Hampshire.

www.owlstnevineyardcourse.com

Worcester CC Worcester, MA

In August 2023, Worcester CC started a heavy dose of work on its course, which is one of just a handful of venues that can say it hosted a Ryder Cup (1927), a U.S. Open (1925), and a U.S. Women's Open (1960).

COURSES & CLUBS

RENOVATION RENAISSANCE

While the membership never lost the entire course during the playing season, they were limited to 15 holes as Gil Hanse's team rotated the work it was doing.

When the course reopened in the spring of 2024, it boasted larger greens and fairways. Over time, putting surfaces shrink, and Hanse pulled them back out to mirror the original Donald Ross designs.

Trees were removed to return the course to its original open heathland aesthetic instead of the parkland, tree-lined courses it had morphed into. The 11th green, which was raised nearly 8 feet in the 1970s was returned to its original design to make the approach into the green blind.

Now, after a year of play following the renovation, Worcester CC has captured the attention of many golfers in the region with its open vistas and old-school charm

befitting the course that hosted the Inaugural Ryder Cup.

www.worcestercc.org

Yale Golf Course New Haven, CT

Since 2020, Yale GC has had quite a bumpy existence. It was put to pasture during the pandemic and it appeared it would never be used as a golf course again. Fortunately, the course was brought back from the brink and is now undergoing a massive restoration.

The Seth Raynor design is considered the best college campus course in the country and many believe once this project is complete Yale GC could reach new heights in the national rankings. The calling card of Raynor designs are massive greens, deep bunkers, and template holes that were

inspired by holes from around the world like the The Road Hole at St. Andrews and The Redan Hole at North Berwick. The most famous hole at Yale, the downhill par-3 ninth, is a Biarritz green with a massive, deep swale that cuts through the middle of it.

The course was closed in 2023 and the planned opening is 2026, but no firm date has been published. The work is intended to add length so that Raynor's template holes play true to the way he designed them in 1926. The plan is to restore the original design and strategy, so angles of holes will not be changed and any changes that did occur over the years will be eliminated so that golfers who play Yale GC after it opens will hit the same types of shots that Raynor hoped would challenge players in 1926.

www.yalegolf.yale.edu

Yale Golf Course





Pura Vida

Costa Rica

BY ALICE & DANNY SCOTT

The Destination

Costa Rica is a lush paradise with vibrant rainforests, mountain volcanoes, and two coastlines – home to people who welcome with open arms and the spirit of Pura Vida. That literally means pure life, but it's a greeting, a farewell, a toast to simple living, much like Aloha in Hawaii. With no standing army, Costa Ricans live in harmony with nature and each other.

The year-round mild climate nurtures abundant fresh produce and seafood for a healthy lifestyle. In fact, Guanacaste is recognized as a Blue Zone, one of a few on earth with the longest-living people. San José, the capital is the heart of Costa Rica's rich coffee culture while the Pacific's "Green Coast" teems with wildlife and adventure.

The Venues

This Marriott duo combines city proximity

and coastal immersion for the full Costa Rica experience. Costa Rica Marriott Hacienda Belen evokes the past with historic design on an authentic coffee plantation, only ten minutes from Juan Santamaria International Airport in San José. Newly renovated rooms offer comfort and inspiring views of the Central Valley mountains with five exceptional restaurants onsite. Guests lounging at the tiered pools enjoy light music and aerial Cirque du Soleil-style performances of brilliant green parrots. The location is ideal for sightseeing excursions to volcanoes, parks and museums. Take the complimentary coffee tour and work out any kinks on the driving range before taking the stunning 100-minute drive to Los Sueños, the closest beachfront resort to the airport.

Los Sueños Marriott Ocean & Golf Resort has it all. Luxury rooms with hammocks overlook the pool complex, ocean beach and marina. Six fabulous restaurants cater to every taste, and the resort fee covers

extensive amenities – daily use of driving range with balls, stand up paddle boards, ocean kayaks, mountain bikes, Sibö fitness center, tennis courts and marshmallow roasting by the fire-pit. The Pura Vida Kids Club is fun for ages 4-12 from 10-5 daily. And the highlight – guided eco tours twice daily, circle the golf course to explore the rainforest's flora and fauna such as sloths, monkeys, and the 300+ year old ceiba tree – phenomenal! Scarlet macaws and toucans flash through the sky with a burst of color.

The Golf

At Hacienda Belen, Armando Miranda is rightly proud of his Academy, driving range and practice facility where Paul Chaplet, Latin America Amateur Champion and Masters' participant practiced.

At Los Sueños, La Iguana Course is crazy good fun. The 18-hole, par 72 designed by Ted Robinson in 2008 lies within a rainforest sanctuary where 100s of

DESTINATIONS

COSTA RICA

unique trees are the stars and 150 bird species call home. The front nine winds through an exotic jungle with tight fairways threading over creeks, with a Tarzan vibe. Five sloths (perezosas in Spanish which translates to lazy ones) live in the trees and one was even photographed by staff on the fairway and called out for slow play.

Director of Golf, Jose Quesada, a former Costa Rican long drive champion offers guests both golf lessons and philosophical inspiration while leading a dedicated team that keeps the course in tip top shape. He shared precious moments, like standing on the green at dawn to hear the jungle's awakening (or as he pronounces it "yoongle") and plucking a fragrant ylang ylang flower used in perfumes like Chanel Chance. The back nine stays in the jungle before giving way to the wide finishing fairways that cross the river and reveal panoramic views of the Pacific at Herradura (horseshoe) Bay. Golf is so unique here, you want to play again and again.

And More

You can hook a drive or hook a fish, embarking from Los Sueños Marina - the billfish capital of the world. Kayak, snorkel, sail or surf. Boat to Tortuga Island or explore "secret beaches." Tour volcanoes, hike to waterfalls or visit Manuel Antonio National Park - just 50 minutes from Los Sueños - for more rainforest encounters.

Our Takeaway

This was our thirty-second country to visit and the first place that felt like the Garden of Eden, especially at La Iguana where wonder meets you at every turn. Look at that tree... and that one. What a beautiful flower, what a gorgeous bird. What is that? It's Pura Vida, a deep, healthy sense of peace.

The Journey

San Juan International Airport in San Jose

has one of the smoothest customs experiences - no wait, no forms, no questions, just a passport stamp, a smile and "Pura Vida". Find direct flights from Boston or New York plus plenty of connections. Rent a car or have Marriott arrange transport: stay a night at Hacienda, a few at Los Sueños with its jungle golf and ocean views, then perhaps finish as we did - with another night at Hacienda, minutes from the airport, the most colorful one we've seen with murals and merchandise reflecting the nations' spirit.





ENDLESS FAIRWAYS

Where Golf Meets Luxury on the Edge of the Pacific

El Cardonal by TGR Design

Imagine standing on the tee box, the crisp ocean breeze brushing against your face as you line up your shot. In the distance, a humpback whale breaches the surface of the Pacific, its splash catching the morning light. This is golf in Los Cabos—where every round is an experience beyond the game, blending luxury, natural beauty, and world-class service into something truly unforgettable.

Los Cabos is a place where golf is more than just a sport—it's a journey through contrasts. One moment, you're teeing off along dramatic seaside cliffs; the next, you're navigating rolling desert dunes framed by rugged mountain peaks. The game here is as breathtaking as it is challenging, designed by legends like Jack Nicklaus, Greg Norman, Tiger Woods, and Davis Love III, all of whom have masterfully sculpted courses that embrace the landscape rather than fight against it.

Must-Play Golf Courses on the Pacific Side:

Los Cabos is home to some of the most scenic and prestigious golf courses in the world. If you're playing on the Pacific side, these are the ones you simply can't miss:

- **Solmar Golf Links:** Greg Norman's "least disturbance" design, where the Pacific views are as endless as the fairways.

- **Diamante Dunes:** A Davis Love III masterpiece, blending towering dunes and ocean horizons, ranked #47 in the world by Golf Digest.
- **El Cardonal:** Tiger Woods' first course, inspired by classic Southern California golf, with sweeping views of the sea and strategic shot-making challenges.
- **Quivira Golf Club:** Jack Nicklaus' crown jewel, featuring dramatic elevation changes, holes that take you from beach to cliffs to desert canyons, and some of the most breathtaking tee shots in the world.

After your round, luxury follows you off the fairway. Whether it's sipping a perfectly crafted cocktail on your private oceanfront balcony or indulging in freshly caught seafood at a world-class restaurant, Los Cabos ensures that every moment is extraordinary.

Beyond its renowned golf courses, Los Cabos continues to evolve as a culinary hotspot, earning international recognition with the MICHELIN Guide's arrival in 2024. This distinction has further positioned the destination as a must-visit for food lovers, and with the guide returning in 2025, its exceptional dining scene will keep gaining global attention.



Solmar Golf Links



Fénix Pedregal



Quivira Golf Club



Diamante Dunes Course



The Woods Cabo

Adding to this vibrant culinary landscape are two new standout restaurants redefining the destination flavors:

- **Fénix Pedregal (Cabo San Lucas):** Nestled in the heart of Cabo San Lucas, FÉNIX Pedregal redefines contemporary Mexican cuisine, blending tradition, fire, and innovation. Led by Chef César Pita, the restaurant embraces the renaissance of Mexican gastronomy, celebrating life through flame-grilled meats, fresh seafood, and the rich, smoky essence of wood-fired cooking.
- **The Woods Cabo (Diamante Los Cabos):** A Baja-Mediterranean fusion experience by Chef Larbi Dahrouch, featuring wood-fired specialties, fresh seafood, and expertly crafted sushi in a relaxed yet refined setting.

From teeing off on world-class fairways to savoring MICHELIN-worthy cuisine, Los Cabos seamlessly blends golf, luxury, and culinary excellence, delivering an unparalleled experience.

Come for the golf, stay for the flavors, and leave with unforgettable memories.

www.visitloscabos.travel
[@loscabostourism](https://www.instagram.com/loscabostourism)

An aerial photograph of a golf course at sunset. The sun is low on the horizon, casting long, golden shadows across the green fairways and sand traps. In the background, a large, multi-story resort building with a red roof sits atop a hill, surrounded by dense evergreen forests. The sky is filled with soft, orange-hued clouds.

**READY
FOR YOUR
NEXT COURSE?**

Photo Credit: @MajkaMedia

The Omni Mount Washington Resort & Spa in New Hampshire's majestic White Mountains is a golf-lovers paradise, where 27-holes of golf and abundant recreational activities await.

The award-winning Donald Ross-designed Mount Washington Course is an 18-hole, Par 72 classic which first opened in 1915, and was restored in 2007 based on the master architect's original plans. Shadowed by the towering Presidential Mountain Range dominated by the resort's namesake, along with with more stunning views of the nature-formed Crawford Notch, it may be difficult to keep your eye on the ball on the course *Golfweek* has named the #1 Course You Can Play in the state since 2009.

The smaller, but arguably just as mighty, 9-hole Mount Pleasant Course originally opened in 1895 and was restored in 1989. Today it offers a challenging Par 35 round alongside the Ammonoosuc River, an ideal course for those who may want to reserve some extra time to explore the many other offerings at this National Historic Landmark resort. A full-service Pro Shop with lessons, retail, club rentals and restaurant, along with practice green and driving range, further enhance the golf experience.

From a full-service spa, pools, fishing, biking and scenic gondola rides, to a high-flying canopy tour, climbing and hiking for the more adventurous, there's no shortage of options before or after you hit the links.

To fuel up for all the fun, there are culinary diversions around every corner. Visit the lofty 1902 dining room or popular Stickney's Restaurant for New England-inspired cuisine and craft

cocktails, or enjoy the casually upscale dining experience at the 1896 Bretton Arms Dining Room and Wine Bar. The mountain-top Switchback Grille serves up tasty lunch and special events like Full Moon Dinners, while The Grille at The Clubhouse is sure to please before or after your round. At the end of the day, a visit to The Cave – an authentic former speakeasy – is a must.

Choose from a variety of accommodations to complete the resort experience, from the historic Omni Mount Washington Hotel and the lovely Omni Bretton Arms Inn, to multi-bedroom Townhomes for golfing buddies. For a truly elevated experience, the Presidential Wing adjacent to the Mount Washington Hotel offers private balconies or patios, mountain views and access to the Presidential Lounge with complimentary continental breakfast and afternoon refreshments.

The resort's Unlimited Golf Package is just that... golf all you can including cart from day of arrival through day of departure. For the more casual golfer, resort guest discounts are available, along with special rates for Military and First Responders. Plus, kids 15 and under golf for free on the Mount Pleasant Course during the month of July.

So what are you waiting for? Reserve your stay at the legendary Omni Mount Wahington Resort today, just 2.5 scenic hours from Boston.

omnihotels.com/mountwashington
800.THE.OMNI [843.6664]
Tee-times: 603.278.GOLF [4653]



▲ A stay in the Presidential Wing is sure to elevate your golf getaway with mountain and golf course views from private balconies.

◀◀ It might be hard to keep your eye on the ball with views like this.

◀ Majestic Mount Washington shadows golfers on the namesake's 18-hole Donald Ross Course.

CLOSER THAN YOU THINK
5 MINUTES TO NEW HAMPSHIRE
20 MINUTES TO MASSACHUSETTS
COME PLAY WITH US



SOUTHERN VERMONT'S CHAMPIONSHIP COURSE

802-257-7380 | WWW.BRATTLEBOROCOUNTRYCLUB.COM

The Rock - Par 72

The Acorn - Par 27



THE ROCK REVAMPED

Award Winning Golf Is Closer To You Than You Think!

Just 45 Minutes from Boston & Providence - Only 1 Hour from Manchester & Hartford

Improved Playing Conditions - New Practice Area - New Short Course "The Acorn" Now Open

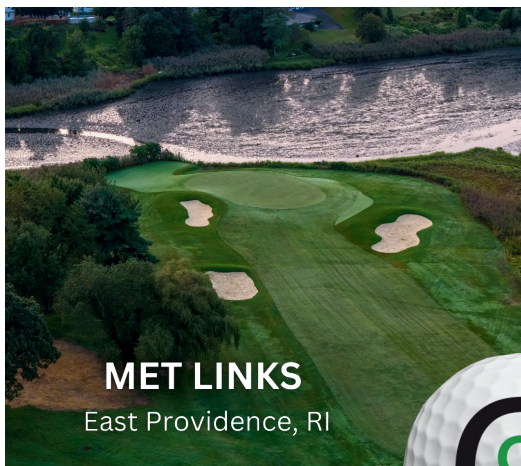
91 Clubhouse Ln. Northbridge, MA 01534 • 508-234-0400 • ShiningRock.com



Best. Season. Ever.

NOW OPEN

Go all in at Mohegan Sun Golf Club this season. Come play at our championship golf course and enjoy one of finest golf experiences in the region. Visit mohegansun.com for more information.



MET LINKS

East Providence, RI



BRISTOL GP.

Bristol, RI



KINGS CROSSING

North Kingstown, RI



ORCHARDS GC

Milford, CT



CLUB9

Come Play

CLUB9 is a Golfcentric Lifestyle and Happiness Brand for players that love golf...have found golf...and love being around the golfing/sporting lifestyle.

CLUB9ers believe that time is sensitive, friendships are all important, golf is social and enjoyed most in a low-pressure environment. The vibe is driven by... fun golf, friends, brew, wine, whiskey, music, and life's comforts.

CLUB9 is an invitation to a golfing lifestyle that is your own!

Join **CLUB9** and enjoy our multiple course membership, a sip of **CLUB9 Seltzer** and a go on the **CLUB9 Tour**. Play our courses: Kings Crossing, Bristol Golf Park, Orchards Golf Course, and Met Links...and more!

VISIT CLUB9GOLF.COM FOR MORE INFORMATION



The Shattuck

Pairing Natural Beauty with Taproom Excellence

TEE 2 TABLE

BY MYLES MURRAY

FROM TEE

The Shattuck Golf Course is a beautiful and challenging track that runs through the foothills of Mount Monadnock in Jaffrey, NH. The course is carved into the forest and features natural obstacles and elevation changes. Along with the premier course it has The Dublin Road Taproom & Eatery which offers craft beers and amazing food to go with the stunning views.

The course was designed by famous architect Brian Silva, and he used the natural layout of the foothills to design a course that

rewards the accurate more than the powerful. There aren't many bunkers, but he placed them in just the right spots to make you sweat. Marshland, rock ledge, and boulders are laced throughout the course, while towering trees of the forest line just about every hole.

The most memorable part of the course for me was the serenity and isolation of every hole. It feels like you are playing in a nature preserve and you have each hole to yourself to enjoy it. It is located in a secluded part of New Hampshire so there is no traffic going by, no power lines overhead, and no two holes are right next to each other. You get to play a terrific course with a quiet peacefulness, but also a really fun and challenging layout.

Hole 5 is the number 1 handicap on the course, but I found the one after it to be more of a challenge. The 6th hole is a

deceptively challenging par-5 with 3 landing areas separated by OB. From the white tees it plays at 430 yards, but the strategy you use to get from tee to green will determine your score. For your tee shot you have a choice; hit it 185 before the first patch of wasteland or try to carry it 260 to the second island of fairway. Most golfers will layup, then you have to 'layup' again to get over the hazard to the second landing area. From here you will have about 130 to the green that has OB marsh on the left hand side. Silva did a great job of showing you a path to birdie, but it is truly risk vs reward.

Two pieces of advice when you play here: Buy the course 'cheat sheet' in the Pro Shop and use your driver sparingly. The cheat sheet shows the layout of every hole and the ideal landing spots off the tee. For example, Hole 3 is 320 yards, but it is

COURSES & CLUBS

THE SHATTUCK

recommended to hit it 180 so you are safe for an approach shot. If you choose to use your driver on this hole you would have to hit a perfect cut shot that will fade towards the narrow fairway up the right hand side with the forest hanging over it. This would require a professional level of accuracy so I would say hit the layup instead.

The course is fun, challenging, beautiful, and worth the drive. If you have the chance to play it multiple times it will be fun to try a different strategy each time, and see which one works best. They also have an all-grass driving range and a mini-golf course near the clubhouse perfect for a day with the family.

TO TABLE

After your round of golf, or if you happen to be in the area, head upstairs to the Dublin Road Taproom & Eatery. This is the type of place you visit for the food and drink regardless if you play golf because the quality and variety are top notch.

The inside looks like a remodeled church with a high arched ceiling covered in wood paneling with exposed beams. The bar runs along one side while the rest of it is filled with long tables. There is a narrow deck area with tables for seating and gorgeous views of the mountain and overlooking the 1st hole. It would be the

perfect spot for a golf tournament or a weekend golf trip. There are flat screen TVs and paintings of the layout of each hole of the course on the walls. I went on a weekday during the summer around 4 and it was packed, and I soon found out why.

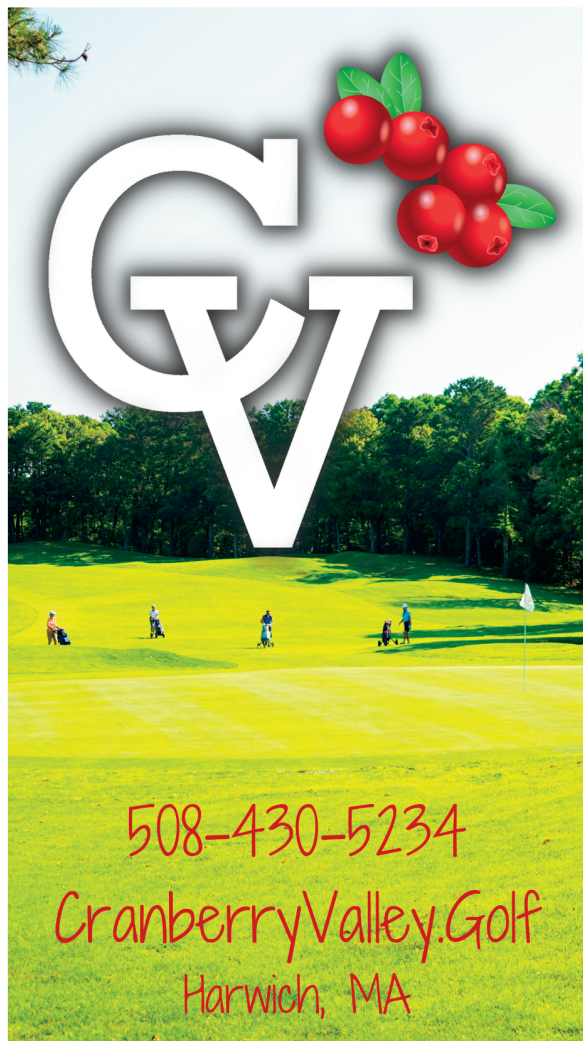
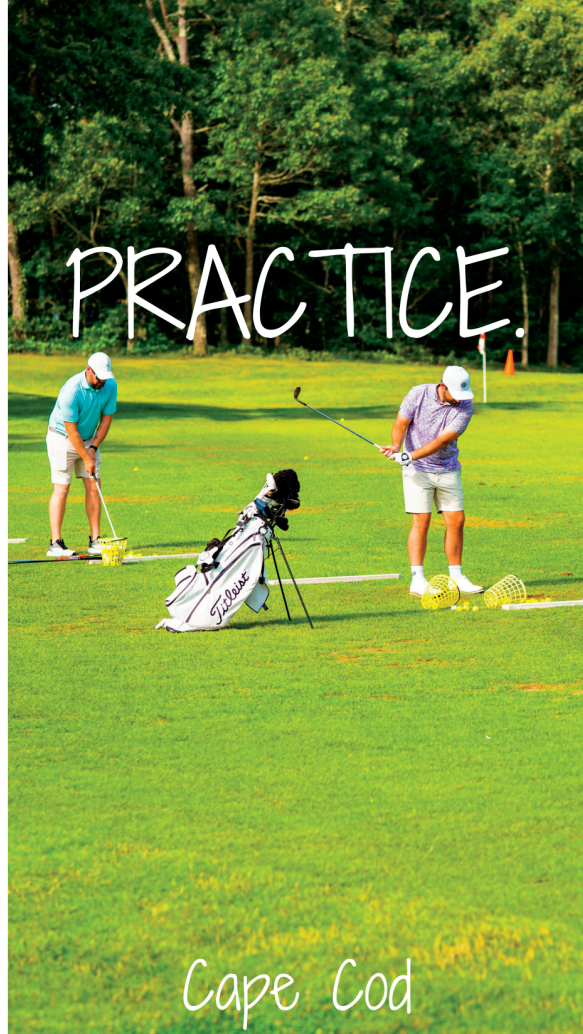
They have 24 rotating taps with IPAs, ciders, sours, and everything in between. You can order a flight of small servings to sample the selections before deciding what you want with your meal. The extensive menu is packed with delicious options, from appetizers and salads to sandwiches, burgers, and full entrées. I had some crispy, parm garlic wings and a Philly cheesesteak that really hit the spot, while my wife went for a hearty grilled chicken salad. On top of that, they have solid happy hour deals on food and drinks, daily specials on burgers, wings, and drafts, and a great perk - you eat free on your birthday! Definitely a place worth checking out whether you like golf or not.

Myles Murray is a teacher and local travel blogger based in Massachusetts. He enjoys golfing, cooking, and traveling with his wife. He connects readers with local cuisine, breweries, and golf destinations on his blog New England Golf and Grub.
www.NewEnglandGolfandGrub.com
www.facebook.com/groups/newenglandgolf



THE SHATTUCK
Jaffrey, MA | (603) 532-4300
www.shattuckgolf.com



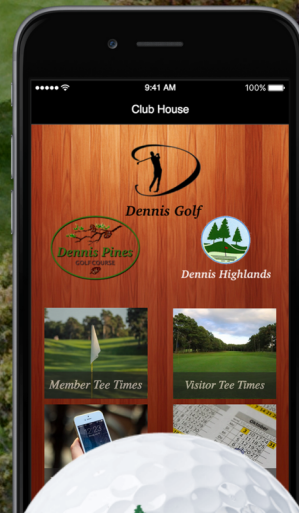


COME EXPLORE THE DENNIS PINES & HIGHLANDS COURSES!

YOUR 36 HOLE CAPE COD GOLF DESTINATION!



Scan to Download
the Dennis Golf App



508-385-8347

WWW.DENNISGOLF.COM



SQAIRZ

THE LIGHTEST PERFORMANCE GOLF SHOES ON THE MARKET.

THE NEW
LT SERIES



ProS2 LT

If we can improve your balance and stability, you will hit the ball farther and straighter.

Less sway, better ball striking.

The shape of the toe box allows your toes to spread naturally for better balance, stability, and comfort.

Unmatched traction.

Hybrid Smart Traction™ System combines the comfort of spikeless with the performance of spikes.

Breathable and 100% waterproof.

Guaranteed waterproof microfiber allows perspiration to escape, but prevents water from getting in.

30-Day Performance Guarantee.

The only golf footwear brand guaranteeing performance and comfort, or your money back.

Zane Navratil
Pickleball Pro

XRZ™ Pickleball Footwear

Power. Durability. Injury Prevention.

The all new XRZ™ shoes are the most comprehensive pickleball shoes ever built, designed for the specific needs of the sport with insights from Zane Navratil.



Scan to Shop
Performance
Footwear





VISIT OUR NEW LOCATION

at Button Hole in Providence, RI



**GET CUSTOM FIT
THE SHACK**



**SHAVE STROKES
THE GREEN**



**GET DIALED IN
THE SHOP**





BOOK NOW



@SPARGOGOLF



 401-946-4653
 spargogolf.com

 fitter@spargogolfclub.com
 One Button Hole Drive, Providence, RI

10K FORGIVENESS

$$MOI_y + MOI_x = MOI_{10,000+ \text{ g-cm}^2}$$



725 SERIES SERIOUS FORGIVENESS FOR EVERY PLAYER

The 10K MOI Exotics E725 Driver is leading the charge for the new Exotics 725 Series providing the ultimate in forgiveness and stability off the tee. Experience the Exotics 725 lineup at touredge.com.

Tour Edge

Picturing
A GOLF SIMULATOR
IN YOUR FUTURE?



NOW RESERVING WINTER 24/25 INSTALLS
(978) 375-2509 | HELLO@TURFANDSIMS.COM



**Carl's
PLACE**





PRESENTED BY



DEFY CANCER FROM THE GOLF COURSE

Get involved with Jimmy Fund Golf presented by Mohegan Sun to give back, have fun, and defy cancer for patients at Dana-Farber Cancer Institute.

- Start a traditional or mini golf event
- Play in an existing event near you
- Become a sponsor to showcase your brand and support our mission

Get started at **JimmyFundGolf.org**



Ace Sponsors



Eagle Sponsors

Aizenstadt Family
The Cape Club
Northeast Golf

GET ON THE RIGHT COURSE TO FIGHT CANCER®



leaderboardnewengland.com



THE PREMIER GOLF TOURNAMENT COMPANY IN THE NORTHEAST

DISCOUNT CODE "NORTHEAST" FOR 10% OFF



Nike Pickleball Camps Bring Education and Entertainment

WHAT DO YOU GET when the most notable name in sports merchandising merges with one of the fastest growing sports on the planet? Nike Pickleball Camps is the answer. This summer and into the fall, all along the eastern seaboard, Nike is partnering with local facilities and coaches to teach the finer points of pickleball to competitors of all ages.

The camps, a collaboration with US Sports Camps, are in line with Nike's longtime corporate philosophy of creating groundbreaking sport innovations and making a positive impact in communities. The Nike Pickleball U12 Camp at Massachusetts' Concord Academy does just that with 3 hours of daily training for athletes ages 6-12. The camps run from June through August and are conducted by top notch coaches including drills and matches.

Kevin Curley, owner of New England Tennis Center in Lancaster, MA and Ridge Pickleball and Tennis Club in Acton, MA, is the Camp Director. A Junior and Division 1 College standout and coach of several top New England junior players, Curley is USTPR Certified.

What Curley does in instructing youngsters, Sarah Ansboury does for adults. The legendary player and instructor

directs the Nike Pickleball Camps at Willy's Pickleball in Eastham, MA. This 2-day clinic on September 27 and 28 is individualized, aiming to address the specific needs of each participant. Ansboury creates a fun and friendly environment while fostering that competitive edge to improve.

The Nike Camp at Willy's is open to all ability levels and includes 10 hours of court time and a low camper-to-coach ratio. While the backdrop of Cape Cod in early autumn is an attraction for sure, Ansboury herself might just be the biggest draw to this Nike Camp. She began playing pickleball in 2014 and has won Gold Medals in both Women's Doubles and Mixed Doubles at the 2016 USAPA National Championships and 2016 US Open.

Ansboury also medaled four times at the 2017 USAPA Nationals highlighted by a Gold in Women's Doubles with her playing partner Gigi LeMaster. Ansboury is the Managing Director at the Professional Pickleball Registry in Hilton Head, South Carolina.

Nike Pickleball Camps in the Northeast and across the country follow a certain set of protocols. All participants are evaluated so that personal instructional needs are met. The following descriptions are what the Camp Directors at Nike

MOLORI UNPLUGGED

NIKE PICKLEBALL CAMPS

Pickleball Camps use to organize participants:

- **Beginner:** Players at this level are new to pickleball and have little to no experience. They can hit basic shots and possess a fundamental understanding of the rules, scoring, and court positioning. Focus is on building confidence and familiarity with the game. (No rating or DUPR rating 1.0 - 2.5)
- **Intermediate:** Players at this level understand the rules and strategy of pickleball and can sustain rallies using a mix of shots. They can hit with some spin and accuracy, resulting in fewer unforced errors. Focus is on refining technique, improving court awareness, and developing strategic play. (DUPR rating 3.0-3.5)
- **Advanced:** Players at this level are proficient in all aspects of the game and employ advanced strategies. They exhibit strong footwork and a deep understanding of gameplay dynamics. This level focuses on competitive play, advanced shot-making, and tactical decision-making. (DUPR rating 4.0+)

This year, Nike is bringing its pickleball camp credo to New Hampshire for the first time with an adult camp at Brewster Academy in Wolfeboro. The 3-day camp, August 15-17, will follow the Nike guidelines of individual training, education on the sport, and good old-fashioned fun.

The goals and agenda for the Wolfeboro camp include technical skill work, player assessments, positioning, strategy, specialty shots, serving, footwork, body positioning, and offensive and defensive volleys.

Young pickleball enthusiasts again take center stage in southern New England at Ellington Racquet Club in Ellington, CT. Camp director Ryan Foster will be instructing athletes aged 6-17 during these 3-day camps that run through July.

Like Ansboury, Foster is an accomplished racquet sport athlete and coach. He has coached tennis at the high school and college levels and is a former Division I athlete at Fairleigh Dickinson University. He also played at Assumption University and ran several programs throughout the New York and New Jersey area.

Speaking of accomplished coaches for pickleball, Andy Rubenstein will be working hard this summer running Nike Adult Pickleball Smash-It camps on Staten Island in New York August 16 and 17 and at Foxwoods Casino in Mashantucket, CT September 6 and 7.

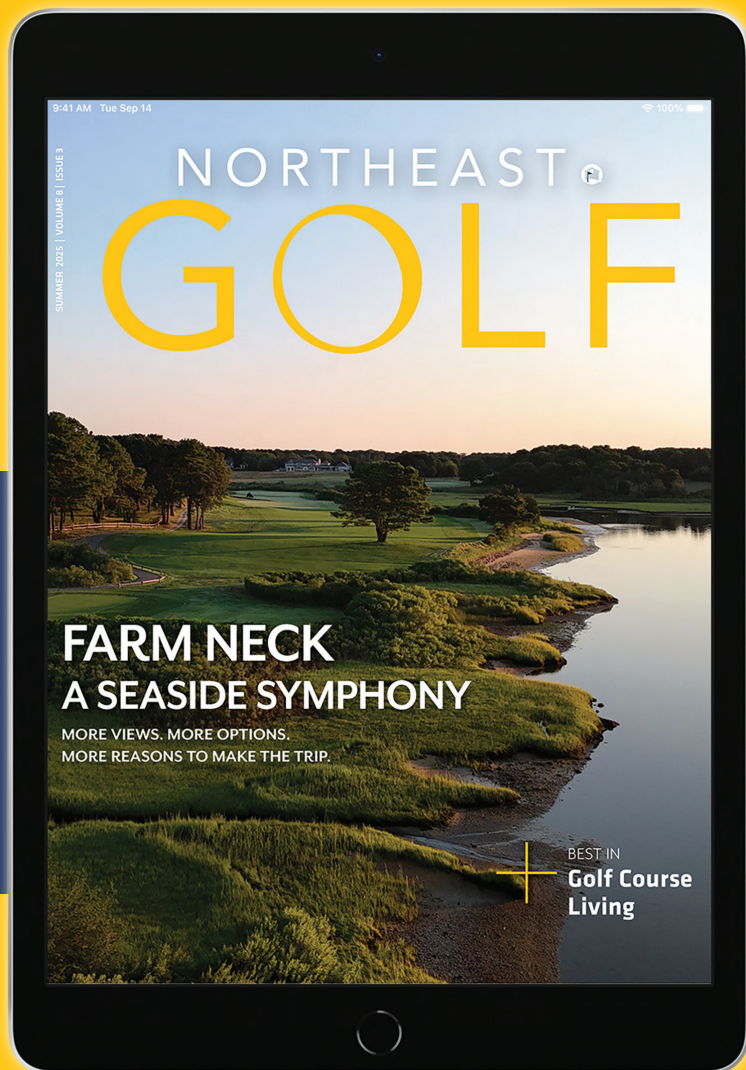
Rubenstein is IFP Certified and has won multiple medals in the sport including a US Open Gold Medal. He is a USA Pickleball Ambassador and the state of Florida's Director of Pickleball.

His upcoming Smash-It camps in both New York and at Foxwoods emphasize small groups of players with similar skill levels focusing on the finer points of pickleball including drop vs. drive, transitioning from defense to offense, block vs. attack, and doubles strategy.

The ongoing collaboration between Nike and pickleball has created a network of training, teaching, practice, and play for pickleball enthusiasts of all ages. So, let's get back to that original question. What do you get when the most notable name in sports merchandising merges with one of the fastest growing sports on the planet? A whole lot of learning and fun. Check out ussportscamps.com for more information on 2025 Nike Pickleball Camps.

John Molori is an author and columnist for numerous publications. Like him on Facebook at John Molori, X @MoloriMedia. Email molorimedia@gmail.com.





EXCITING NEWS!

The new and improved digital format for
Northeast Golf magazine is here!
This user-friendly, robust digital platform
is packed with new enhancements
you'll love, including:

Immediate, password-free access to each new issue via a bimonthly email notification; there's no app to download and no login required

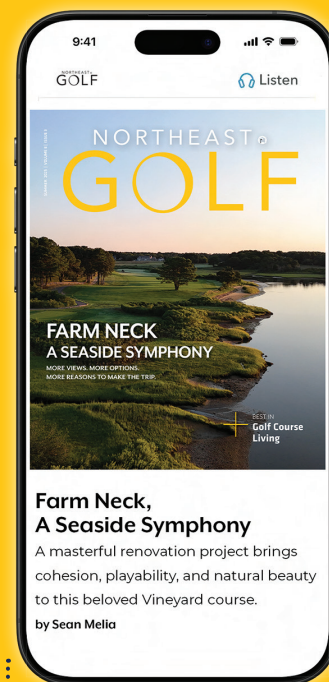
A mobile-optimized option that that can be easily read on a smartphone — but can be enjoyed in its original format on a desktop or laptop computer

A continually updated library of every issue we've published since Spring 2018

Videos to accompany selected articles and departments

An audio enhancement that will read each article to you with the simple click of an icon located at the top right corner of the article introduction

One-click reading on up to five devices



Whether you're on your smartphone, tablet,
laptop, or desktop computer, you can read the
dynamic new digital edition of *Northeast Golf*!

We appreciate your continued support and hope you enjoy this new format.

SUBSCRIBE FREE at www.northeast.golf

The *Ultimate* Golf Life

Best of Golf Course Living 2025

BY TIMOTHY BRANCO



New Seabury Resort Community
Cape Cod, Massachusetts



Owl's Nest Resort Community N.H.



New Seabury Resort Community Cape Cod



*Cutalong
Lake Alma Virginia*



Palmetto Bluffs Bluffton N.C.

WITH LUSH AMENITIES and the opportunity to play whenever you like, living in golf course communities continues to be at the top of the list for all avid players in the game. Over the last 20 years full amenity living communities have grown immensely, especially from the Mid- Atlantic regions south to Florida, the epicenter of golf course living. Gated secure facilities with beautifully custom-designed homes, championship golf and vast amenities make for a very enjoyable living experience. Golf course communities are enclaves for the environment and provide vast open spaces and protected sanctuaries for wildlife as well. With all the challenges of late in life, a place to escape and unwind has become a very sought-after sector in the real estate development industry. Here are our top choices along the Eastern Seaboard and internationally.

USA EASTERN SEABOARD GOLF COURSE LIVING

The Owls Nest Resort Community New Hampshire

Owl's Nest Resort is home to New

Hampshire's acclaimed Nicklaus Design golf course and their New Championship Vineyard course. The resort is the largest tennis, pickle, and paddle resort-complex in New England! With the introduction of Waterscapes, a lakeside retreat featuring new residential ownership opportunities and waterfront amenities, Owl's Nest has become one of New England's finest four-season resort. communities.

www.owlsnestresort.com

New Seabury Resort Community Cape Cod

The Club at New Seabury is a premier Private Golf Community, boasting resort amenities with spectacular views of the iconic Nantucket Sound. Resort features two championship waterfront golf courses, full-service clubhouse, five restaurants, two beach clubs and beach bars, state-of-the-art fitness facility, sixteen tennis courts, and pools. Ockway Village adds new luxury features to by offering residents private gated access.

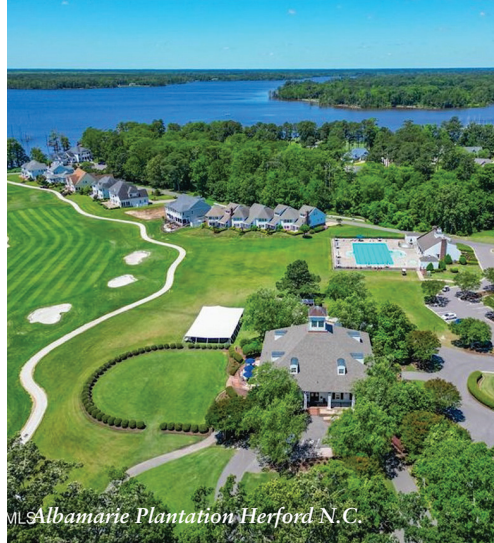
www.newseaburyhomescapcod.com



The Cliffs Communities S.C.

Cutalong Lake Anna Virginia

Cutalong is a master planned private resort community that rests adjacent to Lake Anna State Park, just outside of the town of Mineral in Louisa County, Virginia. Featuring a completed 18-hole championship golf course and plans for tennis courts, aquatic facility, access to Lake Anna via community docks, beach, and other amenities. The Tom Clark championship golf



Albamarie Plantation Herford N.C.



Bright Creek Community N.C.



Woodside Aiken GA

course is 73999 yards long and a masterpiece. The location is Northwest of Richmond east of Shenandoah National Forest.
www.cutalonglakeanna.com

Albamarle Plantation Hertford North Carolina

Albamarle Plantation is located on Albamarle Sound just south of Norfolk and Chesapeake, N.C. Stunning amenities, beautiful year-round weather and a

waterfront world-class golf course designed by Dan Maples. Amenities include, full-service, deep w Marina, tennis courts, swim center, fitness facilities, clubhouse restaurant, with fine dining atmosphere with panoramic views of the Albemarle Sound.

www.albamarleplantation.com/coastal-living

Bright Creek Mill Spring North Carolina

Nestled in the serene foothills of the Blue Ridge Mountains, Bright's Creek is home to one of renowned golf architect Tom Fazio's premier courses, world-class amenities, and extraordinary real estate options. Amenities include a Lifestyle Center, The Mill, state-of-the-art fitness center, bowling alley, full-service equestrian center, outdoor dining and indoor bar options, and open-air pickleball and tennis court

www.brightcreekclub.com

Palmetto Bluffs Bluffton South Carolina

Palmetto Bluff is a residential, private club,

and resort community comprising 20,000 acres in the heart of the South Carolina Lowcountry. Palmetto Bluff has a total of 4,000 entitled homesites. Palmetto features premier golfing amenities, from the 18-hole championship May River Golf Course, designed by Jack Nicklaus, to the new Coore & Crenshaw course opening in 2026, and the new Crossroads 9 hole course.

www.palmettobluff.com

The Cliffs Communities South Carolina

A collection of seven private luxury residential mountain and lake club communities encompassing more than 20,000 acres in the Blue Ridge Mountains. Access to all an unparalleled suite of amenities at seven clubs, seven nationally acclaimed golf courses, wellness centers, water sports, beach clubs, paddle sports, cycling, tennis, an equestrian center, miles of hiking trails, more than a dozen restaurant choices.

www.cliffsliving.com/communities/

GOLF COURSE LIVING

BEST OF 2025

Woodside

Aiken Georgia

Woodside in Aiken, South Carolina, is a gated, master-planned community known for its golf courses, clubhouses, and diverse amenities. It offers a variety of homes and homesites with golf, lake, and woodland views, and is in a “South’s Best Small Town” according to Southern Living Magazine. The community is characterized by its Southern Charm, mild climate, and welcoming atmosphere. Four championship courses by top designers and amenities galore.

www.woodsidecommunities.com

McLemore

Rising Fawn Georgia

McLemore is a master-planned, mountaintop community and golf resort located on Lookout Mountain in Northwest Georgia, at 2,300 feet above sea level. It features two 18-hole golf courses, the Highlands Course and The Keep, a 245-room hotel called Cloudland, a 8500 square foot clubhouse and unsurpassed amenities for residents and members. The Community has over 400 residential home sites with mountain views.

www.themclemore.com

Panther National

Palm Beach Gardens Florida

Centered around a dramatic 18-hole championship golf course designed by golf legends Jack Nicklaus and Justin Thomas, Panther National offers a remarkable array of resort-style amenities secluded among 2,400 acres of picturesque nature preserve. Panther Clubhouse, rejuvenating Lifestyle Club and Spa, pools and cabanas, a complex of tennis courts, indoor & outdoor pickleball, and more than 10 miles of tranquil nature trails in the heart of Palm Beach Gardens Florida.

www.panthernational.com

Cabot Citrus Farms

Brookville Florida

Cabot Citrus Farms is a luxury golf resort and real estate development in Brooksville, Florida, known for its unique landscape and world-class golf courses. The property features two 18-hole courses, a 9-hole course, an 11-hole par-3 course, and extensive practice facilities including a double ended TrackMan driving range. Cabot offers a variety of luxury private and vacation homes. It's part of The Cabot Collection, founded by Canadian entrepreneur Ben Cowan-Dewar.

www.cabotcitrusfarms.com

Lakewood Ranch

Florida

Lakewood Ranch is a master-planned community in Manatee and Sarasota counties, Florida, known for its upscale, family-centered atmosphere and extensive amenities. East of Interstate 75, it offers a variety of housing options, including single-family homes, condos, villas, and townhouses. The community is organized into 30 “Village” neighborhoods and is committed to eco-friendly practices. There are vast amenities including 72 holes of golf, 54 by Arnold Palmer.

www.lakewoodranch.com/

INTERNATIONAL COURSE LIVING

Quivira

Los Cabos Mexico

Quivira Los Cabos is a luxury master-planned golf and residential resort community in Cabo San Lucas, Mexico, offering a blend of world-class golf, resort amenities, and exclusive residential living. The community features the Quivira Golf Club, a Jack Nicklaus signature course, and provides homeowners access to the facilities and restaurants of neighboring Pueblo Bonito resorts. Residents enjoy amenities at Quivira and other Los Cabos resorts.

www.quiviraloscabos.com

McLemore Rising Fawn GA



Panther National Pal Beach FL



Jack's Bay Club
Eleuthera Bahamas

Jack's Bay is a club and residential community nestled on the lush coast of Eleuthera Island in the Bahamas. Situated on over 1200 acres of pristine island property with amazing amenities and unforgettable experiences. Exclusive real estate opportunities for private custom homes alongside Jack Nicklaus and Tiger Woods amazing golf course designs. Custom Designed playground residences are now available at the resort.

www.jacksbayclub.com

The Bermudian Harbor Club
Tuckers Point Bermuda

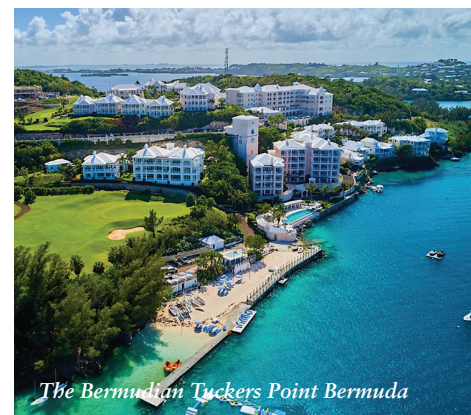
Tucker's Point luxury starts with the location, in the fashionable East End in Tucker's Town, which is known as the Beverly Hills of Bermuda. The Harbor Club is home to some of the most elite estates in the world. Homes, which are in the traditional Bermuda architectural style, high-end finishes, open-floor plans and oversize verandas. Ownership rights include access to the amenities of the five-star Rosewood Bermuda and Sense resort, private airport transfers/ full concierge services.

www.tuckerspointcollection.com

The Abaco Club
Winding Bay Bahamas

Nestled amidst the breathtaking beauty of the Bahamas, The Abaco Club is an exclusive private golf club offering unparalleled experiences in a pristine tropical setting. Renowned for its world-class golf course, designed by links gurus Donald Steel and Tom Mackenzie. Beyond golf, the club offers a 2-mile beach, full-service spa, multiple dining options, a range of water sports, and world-class fishing opportunities. For those seeking a slice of paradise, The Abaco Club also features idyllic residences, from cozy cabanas to oceanfront estate homes

www.theabacoclub.com



THE OWL'S NEST RESORT

NEW HAMPSHIRE

A Celebration of Summer in The White Mountains



The Owl's Nest, New England's premier vacation resort is once again welcoming guests to connect for 2025 summer season! accommodations and vacation packages in The White Mountains of New Hampshire. Come play at the only Jack Nicklaus - designed championship golf course in New Hampshire. Golf at the Owl's Nest is truly magnificent, and the new Vineyard Course is now open for play after a complete renovation. The 6-million-dollar redesign of the original Geoffrey Cornish layout adds another spectacular 18-hole championship course to the resorts collection along the banks of the Pemigewasset River in Ashland, New Hampshire, just 10 minutes from the Resort.

Now guest can enjoy 36 spectacular championship holes of golf at the resort, along with countless other activities and amenities.

Summer Season at The Owl's Nest

Get ready to embrace the magic of summer at Owl's Nest Resort! We're thrilled to offer a diverse array of exciting activities to make your escape unforgettable. The summer season is a very popular time at the resort for golf, tennis, pickleball, hiking, fun along Lake Harold and enjoy a host of seasonal activities and events at the Nest. Our resort offers a wide array of accommodations for your friends and family, from home rentals to Lakeside

Village Suites and guest rooms in our Lakeside Lafayette Lodge. After a full day of outdoor fun Owl's Nest Resort offers numerous choices of restaurants, sports bars and weekly entertainment. Bring your golf clubs and visit Slice Pizzeria & Sports Bar where there are two new aboutGOLF, indoor golf simulators for guest to play at night, while watching the big game.

About our Four-Season Resort

The Owl's Nest Resort is truly a full four-season resort, so there is never an offseason here at the Nest. The Owl's Nest Resort is home to 25 racquet courts including 8 clay tennis courts, 13 pickleball courts, and 4 radiant-heated platform tennis courts.

The resort's Lake Harold is the largest man-made recreational lake in New Hampshire. Fishing, boating, swimming, paddleboarding, and other watersports are all offered at the facility. In addition, the resort has added a new Olympic-sized pool and Jacuzzi complex adjacent to the Boathouse. It currently features an outdoor swimming pool and jacuzzi, boat rentals, indoor and outdoor showers, radiated-heat decks, locker room facilities, and beach access, and a new pool-side bar and restaurant.

The resort's main restaurant, Panorama Six82, is open daily for lunch and dinner, Slice Pizzeria & Sports Bar offers games and golf simulators, and Butch's Brooklyn Deli & Provisions provides snacks, supplies, and lighter fare. If you have gone electric with your ride, there are 10 Tesla su-

perchargers at the resort for quick charging. The SportsNest, home of the golf pro shop, now includes a new WellNest Spa & Rejuvenation Center and a new racquet pro shop with a viewing deck overlooking the championship pickleball courts. The spa provides space for relaxation and replenishment with endless spa treatments, state-of-the-art acoustic sound wave therapy and luxurious massages and facials.

The Owl's Nest Resort is in New Hampshire's White Mountains, less than two hours north of Boston and one hour from Manchester-Boston Regional Airport. The Nest is situated on 600+ acres with spectacular panoramic mountain and forest views. For more information, please visit www.owlsnestresort.com or call 603.726.3076.



SUMMER STAY & PLAY

THE OWL'S NEST
NEW HAMPSHIRE

**LONGER DAYS &
MORE TIME TO PLAY**

Golf • Tennis • Pickleball

Platform Tennis

Lake Harold & the Beach

Heated Pool & Bar • Fitness Room

Butch's Brooklyn Deli & Provisions

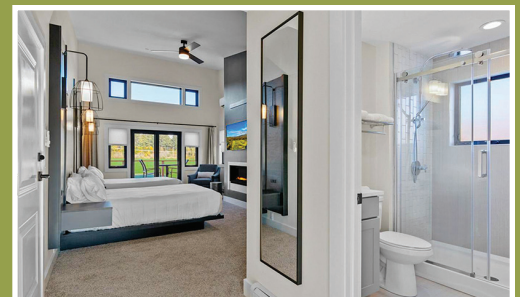
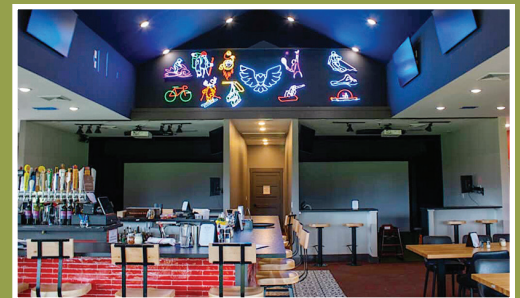
Panorama Six82

Slice Pizzeria & Sports Bar/
Simulators

Shop SportsNest & the Racquet Club

WellNest Spa & Rejuvenation Center

**SUNSHINE, GOOD TIMES &
MEMORIES TO LAST A LIFETIME**



For More Information or
Reservations
www.owlsnestresort.com



OWL'S NEST

THE WHITE MOUNTAINS

Four Seasons, One Home.

No. **1**

**WHITE MOUNTAIN
RESTAURANT**

NH Lodging+ Hospitality
Association

No. **2**

**PICKLEBALL RESORT
WORLDWIDE**

2023 Gold Medal Winner
Tennis Resorts Online

3

SKI AREAS MINUTES AWAY

Waterville 11 miles
Loon 16 miles
Cannon 24 miles

No. **6**

**NICKLAUS GOLF
COURSE WORLDWIDE**

For Design+ Value
Golf Channel/Golf Pass

NAMED AMONG THE TOP

30

**TENNIS RESORTS
WORLDWIDE**

2024 Silver Medal Winner
Tennis Resorts Online

**OUR 18 HOLE NICKLAUS COURSE &
SISTER VINEYARD CHAMPIONSHIP COURSE
ARE NOW OPEN FOR THE SEASON!**



WATERSCAPES

at Owl's Nest

THE WHITE MOUNTAINS

South Lake Townhomes & North Lake Residences NOW FOR SALE!



ASK ABOUT OUR MOUNTAIN VIEW LOTS FOR CUSTOM HOMES AT RISING RIDGE!



We're re-imagining mountain life with luxury homes in two distinct neighborhoods in tax-free NH, less than two hours from Boston. View our North Lake Single Family Homes, 3 + 4 bedrooms from the \$900's, and our South Lake Townhomes, 2 + 3 bedrooms from the \$700's.

**10 Acre Lake Harold | Two 18 Hole Championship Golf Courses | WellNest Spa | Four Restaurants & Grocery
25 Pickle, Paddle & Tennis Courts | Miles of Mountain Trails | Technogym Fitness Center**



Four
Seasons

Sotheby's
INTERNATIONAL REALTY

Schedule your private tour today!

Call us at 603-779-5758 or email at Director@FourSeasonsSIR.com.

Owl's Nest Resort, 40 Clubhouse Lane, Thornton, NH
WaterscapesNH.com | OwlsNestResort.com

Not all of the units in North Lake at Owl's Nest, A Condominium are registered or exempted from registration by the New Hampshire Attorney General's Office under the New Hampshire Condominium Act, RSA ch. 356-B, and until such time as registration or exemption from registration is ordered, no binding contract for the sale or lease of any unit or other interest therein may be created or entered into. © 2024 Waterscapes. Equal Housing Opportunity. Each Office Is Independently Owned And Operated.



"Josh and Jared were exceptional hosts. The travel was seamless and the golf was great. We are scheduling a trip to the southwest of Ireland for next year and using Josh and Jared again. I would highly recommend using Irish Fairways Golf Tours."

- James T., New York, May '25

BOOK YOUR DREAM TRIP TO IRELAND

More than a vacation - an immersive journey through Ireland's heritage,
hospitality, and world-class golf.

