

NORTHEAST GOLF

STREAMSONG'S CHAIN SHORT COURSE

ANOTHER COORE & CRENSHAW GEM
IN THIS CENTRAL FLORIDA HOT SPOT

Golf & Equestrian
Living

Golfers'
Choice Awards

Coming in Fall 2024
www.northeast.golf/vote

THE ACORN SHORT COURSE NOW OPEN

Award Winning Golf Is Closer To You Than You Think!

Just 45 Minutes from Boston & Providence - Only 1 Hour from Manchester & Hartford

COME CHECKOUT OUR NEW PRACTICE FACILITY, BEER GARDEN & TACO TRUCK

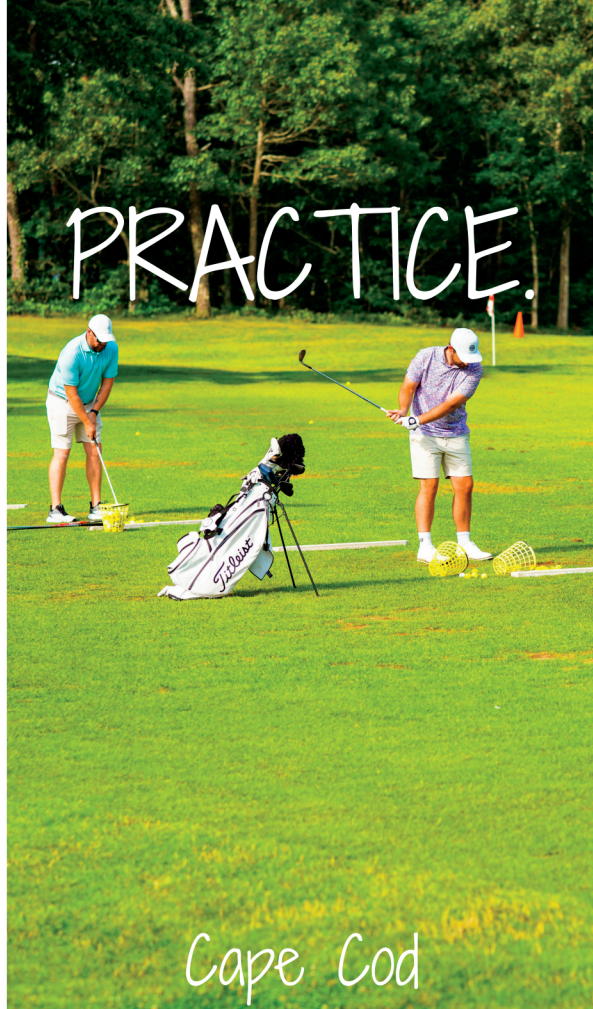


91 Clubhouse Ln. Northbridge, MA 01534 • 508-234-0400 • ShiningRock.com



PLAY.

Award Winning



PRACTICE.

Cape Cod



REPEAT.

Golf Destination



508-430-5234
CranberryValley.Golf
Harwich, MA



THE ULTIMATE GOLF EXPERIENCE

Times 10!



BoyneGolf.com

Getting to BOYNE Golf has never been easier. Whether you're driving or flying into either the nearby Traverse City (TVC) from 19 U.S. cities — or our newly-renovated private 5200' airport at Boyne Mountain, our 10 magnificent courses are closer than you think. **Call 855.428.7447 to book now!**





INSIDE

SUMMER 2024
VOLUME 7 | ISSUE 3

NORTHEAST GOLF

COVER
STORY

08

Streamsong's Newest Course Adds to the Allure

The Chain short course is another Coore & Crenshaw gem in this central Florida hot spot.

FASHION

28

ON TREND

Devon Hasley



18

DESTINATIONS

Combing Passions

by Timothy Branco



36

TEE 2 TABLE

Dennis Golf

by Myles Murray



12

DESTINATIONS

Arkansas Golf Trail

by Alice & Danny Scott

To Golf is to Travel and Play Away

The game of golf and everything that surround the game today is all about personal preferences. Each of us has our favorite places to play, our own bucket list destinations, and a host of gear, fashion, courses, clubs and resorts. There are endless choices for golfers today and over the years we have provided our followers with great resources for golf travel, near and far. This is our “Annual Golf Travel Planner, where you will find endless choices of golf vacations for you, friends and family.

Golf travel today has grown to become one of the largest market sectors in the travel industry worldwide. Golfers will always yearn for greener pastures and new places to play and visit; it is a part of the game. There are over 60 million golfers in the world today playing on over 32,000 golf courses. North America is home to nearly half the world golfers, golf courses and over 65% of the worlds golf resorts. Yearly, avid golfers take two golf vacations usually one regionally by car and another by air travel. For every month of the year, there are great places to visit and play. Summer and fall across the northern states and winter and spring along the southern states offer full calendar golf travel options.

Our Golf Travel Planner is a comprehensive look at some of the finest destinations in the U.S. and abroad. From Fall 2024 through Winter 2025, our guide includes great foliage golf trips, reviews for winter golf getaways and a full array of “Bucket



“For every month of the year, there are great places to visit and play.”



Tim Branco & John Sampson

List” destinations that require advanced planning. At Northeast Golf and The Golf Content Network, you can find resort and region reviews on some of the very best golf destinations in the world.

To golf is to travel, and play away, it is imbedded in the roots of the game. Golf much like life, is a journey that connects us to countless memories, great moments and cherished relationships along the way.

Travel Well!

Timothy R. Branco

*Timothy R. Branco, Editor
Northeast Golf*

Submit Your News & More at:
www.Northeast.Golf/Submit

NORTHEAST[®] GOLF

Editor

Timothy R. Branco
tim@nepubinc.com

Creative Director

Katrina T. Lallier

Editorial

Mike Bailey
Timothy Branco
David DeSmith
Michaela Jaye
Paul Mignosa
John Molori
Jack Ross
Barbara Rowell
Greg Sampson
Alice Scott
Danny Scott
Matt Ward
Phil Werz

Published by:



Formerly New England dot Media
& New England Publishing Group

CEO/Managing Partner

Richard Castiglione
rich@hglmedia.com

CMO/Managing Partner

Greg Sampson
greg@hglmedia.com

Customer Service

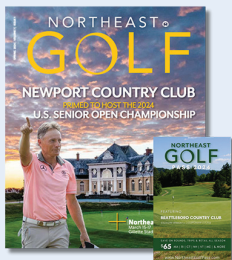
Michaela Sampson
michaela@hglmedia.com

For Editorial & Advertising Requests:

Editorial: 774.930.1623 - Tim Branco
Advertising: 757.621.7494 - Greg Sampson
Shows: 508.942.7340 - Rich Castiglione

© 2024 Home Golf Lifestyle Media LLC.

Reproduction without permission is prohibited. The articles appearing within this publication reflect the opinion of their respective authors and not necessarily those of the publisher.



**JOIN THE
NORTHEAST
GOLF CLUB**

**ONLY \$50
PER YEAR**

**SAVE THOUSANDS
THIS SEASON!**

Become a member at
NortheastGolf.Club Today!

GOLF INSPIRED

— Ambassador Program —

Does This Sound Like You?



**I have a love for golf and desire
to travel the world**



**I have a network that loves
to travel**



**I have a desire to receive
compensation and perks like a
Travel Industry Professional**

Travel Smarter, Golf Inspired



**Subscribe & Stay Connected
GolfInspired.com**



VISIT OUR NEW LOCATION

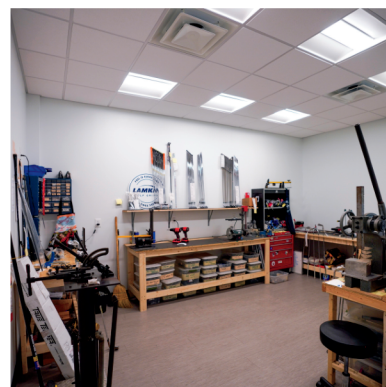
at Button Hole in Providence, RI



**GET CUSTOM FIT
THE SHACK**



**SHAVE STROKES
THE GREEN**



**GET DIALED IN
THE SHOP**





BOOK NOW



@SPARGOGOLF



 401-946-4653
 spargogolf.com

 fitter@spargogolfclub.com
 One Button Hole Drive, Providence, RI

LEADERBOARD *Pro Shop*



ADD MORE VALUE

DISCOVER NEW
PLAYER GIFT
OPTIONS FROM
THE LEADING
BRANDS IN GOLF

LeaderBoard

leaderboardnewengland.com



PRESENTED BY

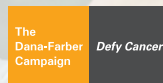


DEFY
CANCER
THROUGH
GOLF



Get involved with Jimmy Fund Golf presented by Mohegan Sun to give back, have fun, and defy cancer for patients at Dana-Farber Cancer Institute.

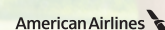
Get started at **JimmyFundGolf.org**



Presented by



Ace Sponsors



Eagle Sponsors

Aizenstadt Family

The Cape Club of Sharon

Northeast Golf

GET ON THE RIGHT COURSE TO FIGHT CANCER®

A NEW VERSE TO A BEAUTIFUL SO



The 13 hole loop at The Chain with The Bucket putting course.

Photo courtesy of Scott Powers

An aerial photograph of a golf course, likely Streamsong, showing a large body of water, a bridge, and lush greenery. The word "NG" is overlaid in large white letters on the left side of the image.

NG

WITH THE ADDITION OF THE CHAIN, STREAMSONG IS A COMPLETE BUCKET LIST DESTINATION

By Mike Bailey

If you're a serious golfer, you probably know about Streamsong Resort in southwest Florida. It's isolated in a good way, featuring multiple, seriously good championship golf courses, all of which are ranked in the top 100 nationally.

But until recently, it lacked one element, a really good short course. Bandon Dunes has one, the 13 holes of Bandon Preserve; and so does Sand Valley with The Sandbox. And now, Streamsong has a super enjoyable one, too, which further cements it as a destination every avid golfer should try to visit at least once.

The new and fourth golf course at Streamsong is called The Chain, and it opened earlier this year to rave reviews. This 19-hole layout was designed by the dynamic duo of Bill Coore and Ben Crenshaw, who also did the sensational Red Course at Streamsong Resort. And it's located right next to Streamsong's magnificent lodge. There's also a 36-hole putting course next to The Chain. You can play both of these courses by themselves (they are only available to resort guests), or use The Chain, in particular as a warm-up for a big course, or a winding-down experience late in the day. Most of all, The Chain is up to the standards Coore-Crenshaw set on the Red Course.

"We're quite fond of these shorter courses," said Coore, who also partnered with Crenshaw on Bandon Preserve and The SandBox. "When you take strength and length out of the equation, golf becomes much more fun for a vastly expanded group of players. And from an architectural perspective we can do more quirky and interesting things with short holes because we've removed the strength and length equation from play. We can do more interesting things on the greens and around the greens and build some greens you might not feel comfortable building on long regulation length holes."

Explain The Chain

The Chain, like The Preserve at Bandon Dunes, takes advantage of its natural surroundings. In the case of The Chain – and the championship courses as well – it is laid out on ancient sand dunes uncovered from the former phosphate mining site that was transformed by Streamsong's original owners and develop-



ers, Mosaic. It's perfect for links-like golf. The area is known as Florida's "Bone Valley," due to the prehistoric fossils that have been found there.

The 36-acre course got its name from the draglines that were used to pull giant buckets in the mining operation. In fact, a 22,000-pound dragline bucket sits at the center of the property on The Bucket putting course.

The land, a lake, and wetlands allowed for super creative holes that range from about 50 yards to nearly 300 yards (the eighth), so it's not a par-3 course necessarily. There are intentionally no designated tees or par values on the scorecard. Match play is a great way to play the course, allowing for the winner of a hole to pick the teeing area. It's casual, fun, but can be extremely challenging.

If you don't feel up to playing all 19 holes, you can opt for a six-hole loop as well, or a 13-hole loop at The Chain. But get them all in if you can. Most players carry a light bag with less than 14 clubs. Being creative as well as skilled will spell success.

Some of the greens are very large with plenty of undulation, false fronts, and sides. The bunkering around them can be intimidating, with imaginative designs and challenging drop-offs into ravines. Water hazards come into play, and there's even a punch-bowl green where the pin position could increase your odds of an ace. To score well, strategic thinking is essential, but you can also enjoy the course and let the breaks fall as they may.

"There are all sorts of holes that are very unusual or of shorter length. And the really good players will really enjoy it," said Crenshaw, the two-time Masters champion who has forged an equally impressive career in golf course design. "This is not a pitch and putt," Crenshaw added. "There's some really good golf here."

While the Chain is impressive, guests who stay at Streamsong should definitely check out The Bucket, too. It's meant to be enjoyed in a casual atmosphere with drink holders on every tee, but the lengthy putts have plenty of break and elevation change. It can definitely hone your putting skills, so like The Chain, it can be good preparation for the big courses.

The big three and everything else

The three championship courses remain the main draw at Streamsong. There's no ocean like there is at Bandon, but their beauty is undeniable. And that comes from the design over the landforms revealed by the old mining site.

The Red and Blue were the first courses to open at Streamsong. They debuted simultaneously in 2012, and it didn't take long before serious golfers everywhere, but especially on the east coast, started to make pilgrimages there.

While Coore-Crenshaw designed the Red, Tom Doak created the Blue Course. The third course, The Black, came in 2017. It was crafted by another hot architect, Gil Hanse. You can hit it almost anywhere on The Black and recover. But the greens are



Photos courtesy of Matt Hahn

- ▲ Streamsong Red and Blue with the Streamsong Lodge in the background.
- ◀ Hole 8 and 15 at The Chain with The Bucket putting course in the distance.
- ▶ The 14th hole at The Chain can stretch to over 200 yards.

gigantic, so hitting a green sometimes means the tough job is still ahead with putts that can be over 100 feet with multiple breaks and elevation change. The Black has 11 acres of greens. “Black is the most fun,” said Kevin Kennedy, general manager at Streamsong. “If you drive it well on Red, you’ll have success. And iron play is key on the Blue,”

Indeed, if you find the fairways on the 7,148-yard, par-72 Red, much of the hard work is done. The Red gives you ample opportunities to find the green and set up birdie putts. And if you miss the greens, generally, you’ll have a chance to get up and down.

Doak, on the 7,276-yard, par-72 Blue, provided wide fairways, but you want to be in good position to come into greens and pin positions. The greens are easily three putt, and you’ve got to have a great short game to save par or whatever if you miss them.

The courses are somewhat intertwined and one of the highlights is where the par-3 16th on the Red and par-3 7th on the Blue both play over a lake to greens that sit in a bowl. They are simply two of the most stunning par 3s you’ll ever play.

Although golf is the main attraction, it hardly stops there. Accommodations, by the innovative design firm of Alberto Alfonso, have floor-to-ceiling glass views of the water or The Chain, very comfortable beds, all contained in a modern, minimalistic, yet luxurious look. The Lodge also features a European-style spa with services inspired by Streamsong’s natural surroundings.



At Streamsong you can also enjoy guided bass fishing, clay shooting, archery, and tennis. The dining at Streamsong is also exceptional. It includes clubhouse restaurants like Pub 59 and the Bone Valley Tavern. You’ll find the Tavern at the Black Course, with 360-degree views of the course and surroundings. The Canyon Lake Steakhouse, located at the Red and Blue clubhouse, offers an elevated steakhouse menu featuring DeB-RAGGA USDA Prime and dry aged beef served in an upscale dining atmosphere.

Finally, to top off all that’s new at Streamsong, there’s Rooftop 360 at the top of The Lodge. It sports panoramic views of The Chain to the east and the Red and Blue courses to the west. There, you can enjoy wine from an extensive collection, unique cocktails and craft beer along with a great selection of tapas-style food. It’s the perfect way to end a day at Streamsong Resort, whether it’s playing championship-level golf, fishing, or one last hurrah with your buddies on The Chain.

www.streamsongresort.com



The Arkansas Golf Trail

BY ALICE & DANNY SCOTT

WHO KNEW, ARKANSAS HAS A GOLF TRAIL? In March, as the flip switched from winter to spring and all were abuzz about the Eclipse, we played two on the trail and others that warrant listing. “The Natural State” mixes gorgeous landscapes with history and more, worthy of rediscovering America.

Little Rock is the big city to fly in and explore a bit before branching out. Stay at Little Rock Marriott for a spectacular waterfront view of the Arkansas River. Downtown attractions include The Clinton Library with interesting historic depictions and artifacts, regardless of political slants. Since Arkansas invented cheese dip, believe it or not, try the world award winning, 24 plus ingredient, creamy treat at Dizzy Gypsy.

Golf at Mystic Creek in El Dorado

Two hours south of Little Rock and just above the border of Louisiana, the town of

El Dorado (Spanish for The Golden), emerged in the 1920s during the black gold rush. A century later, impressive statues on one main corner commemorate the men and machinery that created the boom town.

The Haywood boutique hotel plays host to a stay and play package with Mystic Creek Golf Course, the number one course on the trail and one of Troon portfolio’s pride and joy. This true championship course is home to an Epson Tour event and GM, Cody Lack says it is one of the gals’ favorites to play. A sunny blue sky emphasizes towering pines and hardwoods - a squirrel’s playground and a golfer’s maze. The winding creek is crossed by Swilcanesque bridges throughout the course. The depth of beauty is derived from the natural contouring while the difficulty comes from the convolution of bunker placement and crazy greens that Kenneth Dye Jr.

designed. Some of the elevated greens with false fronts and sides make for easy stairways to seven.

The three-year new clubhouse, built with local pines, serves as an amphitheater for the 18th hole on the ground level or upper balcony. The Mystic Grill delivers quality service with a pretty outdoor view. Salmon cakes are a must try and so is the course.

www.golfmysticcreek.com

Golf at DeGray Lake Resort

DeGray Lake Resort State Park is a whole get away destination, one hour from Little Rock. The Lodge is perched on the lake with a front lawn for romantic weddings or family reunions like The Duck Dynasty’s.

Leon Howard designed the golf course through rolling foothills of the Ouachita Mountains. The front nine fairways are wide with a few inconspicuous homes and



assorted waterfowl strutting. Dogwood trees sparkle with white blooms amidst the evergreens on the back nine. It is a journey in the woods where Safaris are led for park visitors to search for nocturnal animals in a golf cart caravan.

The course is well maintained with help from prisoners of Arkansas Department of Corrections. Dressed in white jumpsuits, looking like golf caddies, they parade to duty with landscape implements, guarded by fully armed sheriffs on horseback. They love the assignment and do a great job.

Golf, boat, relax or explore nature. Boredom never sets in.

www.degraygolf.com

Hot Springs Village

The largest gated community in North America has eleven lakes and three nines at the Isabella Golf Complex, designated on the

Arkansas Golf Trail. Plus, eight more courses are beautifully designed and maintained for a storybook golf life for residents and visitors, 45 minutes from Little Rock.

Granada was designed in '04 with panoramic views. Cortez is known for its wildlife, with occasional bear sightings; but deer and possums are more prevalent on all the courses including Ponce de Leon, originally opened by John Daly. Balboa, Coronado, DeSoto, and Magellan complete the public courses while Diamante Country Club is a private course in a gated community within the largest gated community for double security.

Nearby in the town and National Park of Hot Springs, thermal waters have drawn visitors for over a century. The Fordyce Bathhouse Visitor Center and Museum is a comprehensive display of original bath works. The Gangster Museum delivers an

entertaining history, showcasing the New York connection of Al Capone and others who chose Hot Springs as an early base of operations, their gangster paradise.

Oaklawn Racing and Gaming began here in 1905 and with \$100m in renovations, today you can bet on having fun, wager on the ponies or canter through the expansive casino and dine at The Bugler, a fine culinary winner.

Three-Day stays at Hot Springs Village start at \$299 and include lodging, meal for two, community tour, amenity access and golf. Book this getaway and you may discover your new home.

www.explorethevillage.com

For more on all 14 courses on the Arkansas Golf Trail:

www.arkansas.com/natural-state/articles/arkansas-golf-trail

Enjoy your *next*
ROUND with us.



Named New Hampshire's "#1 Public Course" since 2009 by *Golfweek* magazine, Omni Mount Washington Resort offers a beautiful setting to test even the most experienced golfer. After your round, enjoy world-class dining, an award-winning spa and endless views from your private balcony in the new Presidential Wing guest rooms.

OMNI
MOUNT WASHINGTON

[OMNIHOTELS.COM/NEGOLF](https://omnihotels.com/negolf)

TEE-TIMES: 603-278-GOLF [4653] | LODGING: 800-843-6664

WORLD CLASS FACILITIES / WORLD ACCLAIMED DESTINATION / PGA TOUR SHOP

LOS CABOS

LUXURY GOLF TRAVEL

There are only a handful of international golf destinations in the world that the PGA Tour has chosen to host events at each year. In 2023 the Tour came to Los Cabos to host the World Wide Technology Championship for five years. Los Cabos' commitment to excellence, hospitality, amazing resorts, and 18 great new golf courses (12 recognized as the "Best in Mexico" by Golf Digest) may just be the newest hotbed of world luxury golf travel.

To say that Los Cabos has arrived on the international golf scene is very much understated, Los Cabos has become a global destination for luxury golf vacations. It is very rare for a golf tourism destination to climb to the ranks as one of the very best in the world, Los Cabos is the exception. Los Cabos has been the top golf travel destination for some time now in Latin America, over the last 10 years this world-class luxury golf destination has taken a world stage in international golf travel. The ultimate accolade on golf's world stage was in 2023 when the PGA Tour chose Los Cabos as the new home for the next five years of The World Technology Championship at Tiger Woods' first golf design, El Cardonal, at Diamante Cabo.



The destination has become one of the most popular luxury golf destinations in North America and throughout the world. Where the Pacific Ocean meets the Sea of Cortés, bliss exists in the form of fresh mangoes and slow sunsets, unparalleled luxury golf resorts set in a subtropical paradise with 350 days of sunshine a year. If your idea of golf heaven is a diverse array of spectacular courses woven into a dazzling seaside landscape, Los Cabos is the destination for you. Mexico's premier tourism destination, Los



Cabos, is home to some of the world's most luxurious hotels and resorts, outstanding spas, award-winning restaurants as well as top-ranked golf courses, amazing tours, activities, and adventures. The growing popularity of Los Cabos has gone viral in the golf and luxury travel industry.

Award-Winning Culinary Delights Abound in Los Cabos

Los Cabos is well known for its incredible food and nightlife, and the restaurant scene leads Latin America for its diversity, creativity, and epic chefs, who are constantly creating new imaginative delicacies. This incredible spot at the end of the Baja California Peninsula has become a favorite destination not only for its beautiful beaches and lively nightlife, but also for its culinary scene. In 2024 Los Cabos earned new acclaim in Michelin's inaugural Mexico guide, with 18 restaurants across the destination recognized for their quality gastronomic offerings not only for fine dining, but also for sustainable and affordable restaurants. The food scene in Los Cabos is all about fresh seafood and locally grown ingredients, which is why it's become a top destination for food lovers.

"We are honored to have so many deserving restaurants in Los

Cabos recognized in the first MICHELIN Guide Mexico," said Rodrigo Esponda, Managing Director of the Los Cabos Tourism Board. "Los Cabos' diverse landscape, natural ecosystems and unique location have positioned the destination as the largest producer of organic produce in Mexico. The destination's regenerative farming and sustainable fishing practices allow local restaurants and chefs to provide fresh-caught seafood that is locally sourced and organic produce that inspires renowned chefs to turn gastronomy into a creative art and exceptional experience."

A Haven For Golf Enthusiasts

Nearly nine years ago Tiger Woods celebrated his first golf course design, El Cardonal at Diamante, a private resort oasis in Los Cabos. Los Cabos is home to the PGA Tour Worldwide Golf Championships and has been recognized as one of the top destinations for golf enthusiasts, boasting two courses that have been ranked among the world's best by Golf Digest magazine in its 2024-2025 edition.

The destination also has multiple mentions on Golfweek's list of "Top 50 courses in Mexico, Caribbean, Atlantic islands and Central America." Topping off this year's list at number four was The Dunes Course at Diamante Cabo San Lucas, designed by Davis

Love III. The 18-hole course sits among some of the most dramatic sand dunes in the world and is designed so that you're playing toward the ocean, along the ocean, or away from the ocean.

Adding to the 18 world-class golf resorts in Los Cabos is the recently opened Park Hyatt, and the St Regis Los Cabos Quivira, with a Jack Nicklaus signature golf course, is slated to open in 2025. The newly planned Ernie Els course at Oleada, The Legacy Club at Diamante by Tiger Woods, and David McLay's Baja Bay Club East Cape round out the destination's growing golf portfolio, which is approaching 22 courses in total. The Oleada property sits directly between Diamante and the newer Solmar Golf Links at Grand Solmar Pacific Dunes, with its Greg Norman-designed course.

Los Cabos now offers a diverse array of options, ranging from public and resort public to semi-private and private courses. It has become a benchmark for playing award-winning designs by prolific architects such as Jack Nicklaus' Quivira, Cabo del Sol Cove Club, Puerto Los Cabos II, Campestre San Jose, Palmilla, El Dorado, to Tom Fazio's Querencia, Tiger Woods' Diamante Cardonal, Davis Love's Diamante Dunes, Greg Norman's Solmar Golf Links, Puerto Los Cabos I, Fred Couples' Twin Dolphin, Robert Trent Jones' Cabo Real, and Tom Weiskopf's Cabo del Sol, among a few others.

Scattered across a scenic 20-mile corridor connecting the touristy Cabo San Lucas to the cultural town center of San José del Cabo in the east, nearly 288,000 people call this cape of Los Cabos, Mexico home. Known for its luxury hospitality, exuberant nightlife, and diverse culinary delights, Los Cabos exceeds expectations. Los Cabos boasts a mountain-des-

ert-ocean environment unique in the western hemisphere. It is truly an incredible golf destination that continues to add new courses, new resorts, and unlimited activities and amenities. Los Cabos, located at the tip of the 1,000-mile-long Baja California Peninsula, is one of the world's most diverse tourism destinations. Boasting a dramatic desert backdrop nestled between the Sierra de la Laguna Mountain range and coastlines of the Pacific Ocean and Sea of Cortez, Los Cabos is home to award-winning resorts, dynamic wellness experiences, and exquisite culinary offerings often regarded by many as some of the finest tourism offerings available anywhere. A growing list of championship golf courses, rejuvenating spas, and world-renowned sport fishing tournaments add to the destination's unmatched appeal.

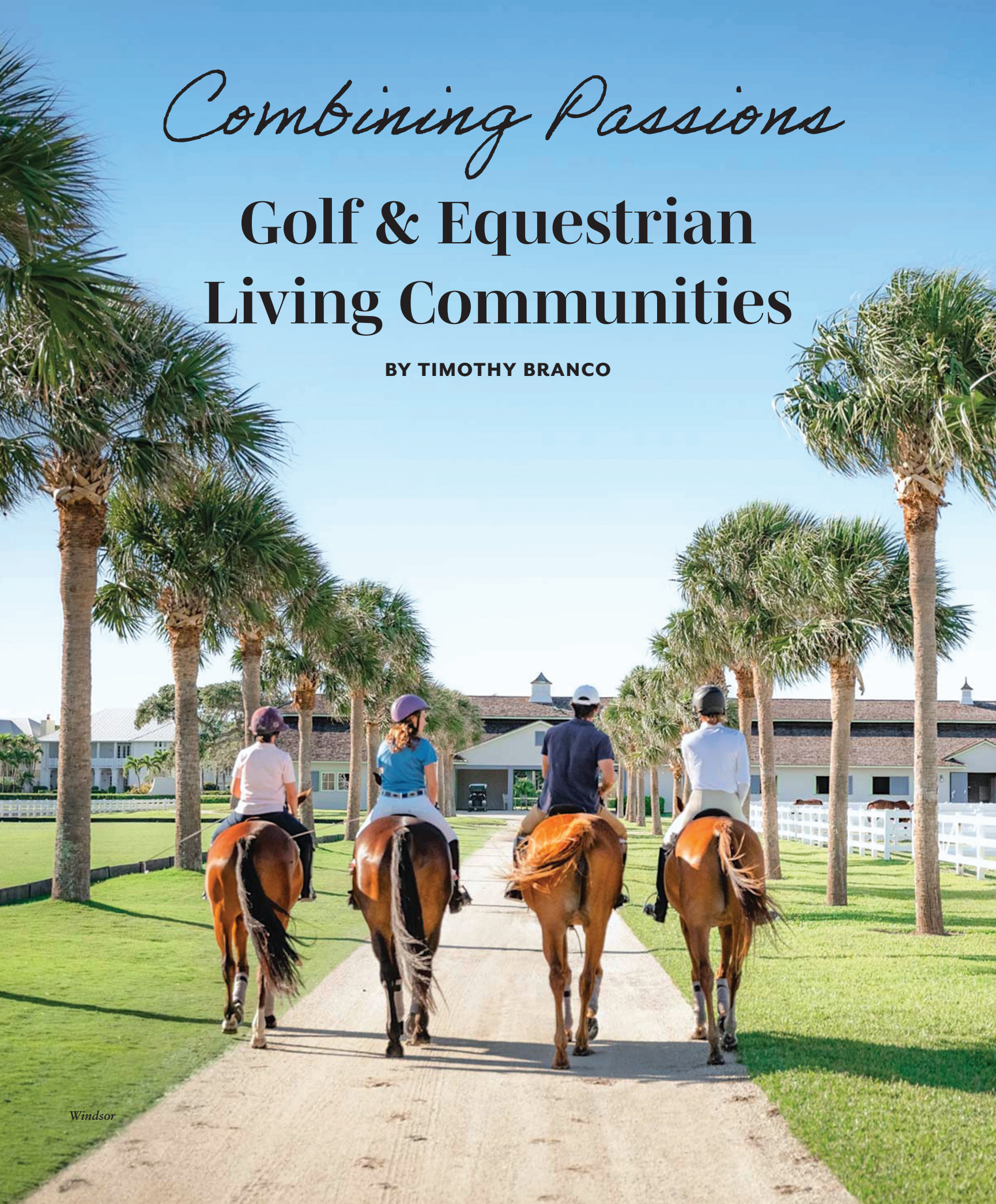
www.visitloscabos.travel
[@loscabostourism](https://www.instagram.com/loscabostourism)



Combining Passions

Golf & Equestrian Living Communities

BY TIMOTHY BRANCO



LIVING IN GOLF & EQUESTRIAN COMMUNITIES

OVER THE LAST HUNDRED YEARS, only a very small amount of planned living communities offered residents options for the equestrian endeavors with golf facilities as well. The first were private clubs in the Northeast that began as traditional sporting clubs for affluent turn of the century families. When golf became very popular in the United States after 1900, many of these clubs added golf courses on pastureland once used for horses. Some of the most prestigious golf clubs in the country were built in Boston, Chicago, New York, Philadelphia and other affluent northeast and mid-west urban locations. The age of golf course living had begun as luxury homes began to be built at and alongside of these prestigious clubs.

What began in the northeast quickly moved south to sunny warm Florida, which was predominately comprised of cotton farms, sugar plantations and cattle ranches in the late 1800's. When Henry Morrison Flagler first visited Florida in March 1878, he had accumulated a vast fortune with the Standard Oil Company (today Exxon Mobil) in Cleveland and New York as a longtime

partner of John D. Rockefeller. Impressed by Florida's mild winter climate, Flagler had vision toward Florida and a new role of resort and railroad developer. The first 18-hole South Florida golf course was created in 1897 at Henry Flagler's luxurious Palm Beach Hotel, (Now the famous Breakers). It defined Palm Beach as an area of sophistication, high standards, and excellence in golf and equestrian endeavors as well.

The Palm Beaches became the place to be for both rich socialites, and the Hollywood elite as the region developed rapidly with new resorts, communities and clubs offering residents access to golf and equestrian living and lavish events. The Palm Beach region was named the "Village of Golf" in the early 1900's. The next 50 years brought countless resort hotels to almost all regions throughout Florida, many of which had equestrian facilities and ultimately added golf courses because of the games booming popularity. The fame of Robert Tyre Jones, (Bobby Jones) in the 1920's, changed everything, he was the most influential figure in the growth of golf. After his retirement in 1930, he founded and helped design,

Augusta National Golf Club, which would become home to the most prestigious golf event in the world, The Masters.

The growth of golf and equestrian communities spread slowly across the south in Virginia, the Carolina's, Georgia, Kentucky and south to Florida. The sporting clubs of times past, had evolved to living communities offering expansive amenities for golf and equestrian living. These communities were developed to accommodate the need for large equestrian homes and estates for riding, training and competitions with open acreage for activities and events. Living in a golf and equestrian community can offer several benefits for horse enthusiasts or individuals looking to experience a unique lifestyle.

With a wide range of locations and property options, horse-friendly communities provide residents with perks and a rewarding way of life—physically, mentally, and emotionally. Equestrian residential communities are designed for all different lifestyles, you don't have to own a horse or even ride one to own a home in an equestrian community. Many people find

The Country Club



The Breakers





simply being around horses enjoyable. Horse-friendly communities offer the chance to enjoy a relaxing way of life in a scenic countryside setting with a wide range of locations comes a wide range of equestrian property choices, from single-family homes to luxury estates. For those who love horses, living in an equestrian community can provide a higher quality of life. Being able to spend more time with horses, enjoy the outdoors, and live in a peaceful and natural setting can improve mental and physical well-being. Equestrian properties tend to hold their value better than other types of real estate. If you own a property in a golf and equestrian community, the demand for properties in such a community can increase the value of your property substantially.

One of the most amazing stories in golf and equestrian living is that of Larry Roberts and family from Wilmington, Ohio.

in 1965, he was a teenager in Wilmington, Ohio, who wanted to start his own business, so he did; he purchased a single Ford truck for hauling furniture and his business flourished through his dedication to customer service, hard work, and a natural savvy for business. He established four core values: family, service, safety, and quality. Over the next 55-plus years, the family owned-and-operated company grew to over 18,000 employees and expanded to include a fleet of over 21,000 tractors and trailers, throughout the US, Puerto Rico, and cross-border shipping to Canada and Mexico, as well as national and international global transportation services.

Almost 40 years ago Larry & Mary Roberts with a strong passion for horses created Roberts Arena on their Wilmington, Ohio family property. For decades it has served as the 'Showplace of the Midwest',

and it was national destination for AQHA and other breed shows. Numerous land acquisitions and expansions have made it one of top facilities in the country. In 2016 the Roberts Arena in Wilmington was rebranded as The World Equestrian Center of Wilmington, Ohio. Mr. Roberts was also very influential in the expansion and development of Wellington, in Palm Beach County Florida.

The Roberts family summered in Ocala Florida; a city known as "The Horse Capital of The World". He decided to create something very special in Ocala. In 1999 Mr. Roberts acquired 1300 acres and developed Golden Ocala Golf & Equestrian Community, a luxury facility, considered the Jewel of Marion County. Golden Ocala quickly moved forward as one of the leading golf and equestrian communities in the country. Roberts then launched plans for the largest equestrian complex in the United

States and in spring of 2021, the World Equestrian Center opened its doors. Over the last 3 years the Center has continued to expand the facility which recently launched a new residential community called Equestrian Estates, which will redefine luxury living in the Horse Capital of The World, Ocala. To date the Roberts family has acquired over 6000 acres of property in Marion County Florida.

Northeast Golf, with input from our readers have amassed a review of some of the most prolific golf and equestrian communities along the east coast regions. The eastern U.S. States provide a spectrum of choices from countryside to coastal and mountain properties that all offer spectacular facilities and unsurpassed amenities in equestrian, golf, racquet sports, recreation for the entire family. The equestrian aspect of these communities usually means much more open spaces, which adds to ambience and character of living.

Golden Ocala Golf & Equestrian Center **Ocala, Florida**

goldenocala.com

Situated on over 1300 acres Golden Ocala has set a new standard for golf and equestrian living.

Attention to detail for all things excellent is what sets Golden Ocala Golf & Equestrian Club apart. There is simply no luxury living comparison. It is rare to find magnificent homes, a championship golf course, elite equestrian facilities, top level tennis facilities and numerous other amenities all in one community. The stately 77,000 sq. ft. Golden Ocala Clubhouse is in the center of the exclusive community surrounded by a championship 18-hole Ron Garl tribute designed golf course. Golden Ocala has added extensive new practice facilities for members and guest. The Fitness



Center, Tennis Club, Spa and Pool are in the shadow of the clubhouse which affords easy access for members to enjoy. Horse lovers are also at home here with an elite equestrian area including barns, an outdoor training arena and a network of riding trails.

Windsor

Vero Beach, Florida

windsorflorida.com

For more than three decades, Windsor's exclusive Vero Beach sporting-club community has offered sophisticated living on 472 lush acres nestled between the Atlantic Ocean and the Indian River. This private community has grown to encompass more than 350 homes in its unspoiled setting. The last remaining undeveloped portion of Windsor is a 47-acre swath of land adjacent to the banks of the Indian River Lagoon, which is part of a master plan for the North Village. The community that features a diverse array of custom oceanfront, fairway-front, and village homes as well as a links-style 18-hole golf course by Robert Trent Jones Jr., an Equestrian



Centre with a polo field, a Tennis Centre by Stan Smith, a recently renovated Beach Club, and world-class dining. Members also enjoy a unique sense of connection in Windsor's bustling Village Centre and through its rich cultural programming.

Sea Pines Resort

Hilton Head South Carolina

seapines.com

Sea Pines is a 5,200-acre gated community located on the southern end of Hilton Head Island. More than 60 years ago, Sea Pines visionary and founder Charles Fraser created an amazing environmentally friendly

LIVING IN GOLF & EQUESTRIAN COMMUNITIES

community that was among the first of its kind. Since 1970, the Sea Pines Forest Preserve has been a protected area for wildlife habitat and outdoor exploration. The preserve has grown to include bridle paths, wetland boardwalks, bridges and fishing docks. Sea Pines features 3 championship golf courses, including the famed Harbour Town Golf Links (site of an annual PGA Tour event), dozens of tennis courts, the deep-water Harbour Town Yacht Basin, South Beach Marina, 14 miles of paved biking and leisure trails and an equestrian center. A new 15-million-dollar clubhouse is underway at the facility. Sea Pines is both a living community and exclusive resort property with endless amenities and dining facilities.

Moss Creek

Hilton Head, South Carolina

moss creek-hiltonhead.com

Moss Creek is a private, master-planned community covering 1,000 acres just minutes from Hilton Head Island. Here you will find the Hilton Head area's only private mainland marina at Moss Creek Plantation. With full access to the Intracoastal Waterway, the marina accommodates 75 wet slips and 125 dry slips, along with three kayak racks and water and electricity at docksides. Property owners each own a share of Moss Creek's enviable private club amenities—boat storage, casual waterfront pavilion, marsh front pool, two nature preserves, 14,000-sf clubhouse, 36 holes of golf, seven tennis courts, fully equipped equestrian center and

miles of trails. The George Fazio designed golf course was featured on the "America's 100 Best Golf Courses" list in Golf Digest. The Equestrian center is a place where you can lose yourself in the romantic backdrop of pecan trees draped with Spanish moss. The campus is set on 10 acres, features 20 stalls, offers horse boarding, riding lessons and summer camps for the kids.

Rose Hill Plantation

Bluffton, South Carolina

Rosehill.com

Surrounded by the natural beauty of the Lowcountry, the 2000-acre Rose Hill Plantation is a Bluffton, South Carolina gated community offering championship golf, a variety of amenities, a low POA fee,

World Equestrian Center





and a true sense of community. Not only does Rose Hill feature an 18-hole Gene Hamm golf course, but the community sets itself apart by its unique recreational amenities for all ages. From parks, nature trails, fishing, and kayaking, to tennis, pickleball, bocce ball, and equestrian facilities, there is something for everyone. In addition, the new clubhouse is a perfect gathering place, with happy hours, live music, and a restaurant that serves Lowcountry cuisine. Real estate offerings include golf course homes, patio homes, equestrian estates and marsh waterfront estates overlooking the Colleton River. Rose Hill has two gated entrances with 24-hour security. The community is conveniently located minutes from shops, restaurants, healthcare, outlets, historic Old Town Bluffton, and Hilton Head Island.

The Ford Field & River Club

Richmond Hill, Georgia

fordfieldandriverriverclub.com

Nestled on the Ogeechee River just outside of historic Savannah lies The Ford Plantation, a premier private sporting club and residential community. This 1,800-acre premier sporting community boasts Pete Dye Golf, a 22-stall equestrian center, deep water access marina, fishing, family-friendly pursuits, spa, fitness center. The Ford's selection in 2020 as a Certified Audubon Cooperative Sanctuary,

after a rigorous certification process across multiple categories, including habitat and wildlife management, water conservation, and education. The club's namesake, the American industrialist Henry Ford, became enamored with the area's charms while on a trip to his former winter hideaway in more fashionable Florida. The Ford's selection in 2020 as a Certified Audubon Cooperative Sanctuary, after a rigorous certification process across multiple categories, including habitat and wildlife management, water conservation, and education.

The Greenbrier

White Sulphur Springs, West Virginia

greenbriersportingclub.com

The Greenbrier Sporting Club, founded in 2000, is a private equity club and residential community. The community, which spans all 11,000 acres is the setting for this modern sporting club. The private, world-class amenities and pursuits, including hiking, biking, and golf and an equestrian center. The 18-hole course designed by Tom Fazio named, The Snead as well as executive-level sports such as fly fishing, European sporting clays, equestrian center and more than 50 amenities of The Greenbrier. The combination of historical significance, architectural integrity, long-standing sporting tradition make The Greenbrier Sporting Club a sought-after

setting for the entire family. Club members enjoy private amenities unavailable to hotel guests. Two lodges, The Lodge and The Summit, feature what some members have called "a resort within a resort," with infinity pools, restaurants, lounges, sport and fitness, and other activities at each.

The Preserve

Richmond, Rhode Island

thepreserveri.com

The Preserve Resort & Spa is a luxury residential and sporting club located in Richmond, Rhode Island. It spans over 3,500 acres of pristine wilderness, offering a range of outdoor activities such as hunting, fishing, shooting, and horseback riding. The property is surrounded by beautiful forests, streams, and ponds, and features a stunning clubhouse that serves as the hub of activity for members and guests. Members have access to world-class amenities, including a spa, fitness center, tennis facilities, shooting and training ranges and a pool. The Preserve is also home to a variety of dining options, private catering and full concierge services for residents and guest. The Preserve was conceived as an unparalleled luxury resort and master-planned community, offering the best outdoor experiences, restaurants, luxury accommodations and luxury homes in the United States within a breathtaking, protected landscape.



GET YOUR VOTE ON!

RESORTS • COURSES • CLUBS • EQUIPMENT • APPAREL • AND MORE

SUBMIT YOUR VOTES AT NORTHEAST.GOLF/VOTE



G

GOLF 1995 DESTINATION

The Nation's Longest Running Golf Travel Series, Since 1995

"Tee up for adventure with Golf Destination! Explore stunning courses and destinations, get pro tips, uncover fascinating history, and meet golf's brightest stars.

Watch us on NESN,
NESN+, NESN
National and
Bally's Sports
Florida.

NORTHEAST®
GOLF
Official Marketing Partner

check golfdestination.tv for airtimes and more!

Always on @golfdestination



NESN *Bally*
SPORTS

Presented by:

Goslings
Since 1806

golfdestination.tv @golfdestination #golfdestination

SQAIRZ

Balance = Power.

Lighter. More supportive. Engineered to perform.

If we can improve your balance and stability, you will hit the ball farther and straighter.

Less sway, better ball striking. The shape of the toe box allows your toes to spread naturally for better balance, stability, and comfort.

Unmatched traction. Hybrid Smart Traction™ System combines the comfort of spikeless with the performance of spikes.

Breathable and 100% waterproof. Guaranteed waterproof microfiber allows perspiration to escape, but prevents water from getting in.

30-Day Performance Guarantee. The only golf footwear brand guaranteeing performance and comfort, or your money back.

To learn more, go to www.sqairz.com.



VELO



ProS2



SPEED2

INDEPENDENTLY TESTED & PROVEN



Increase of up
to 9 yards (27 ft)
in distance



Increase of up
to 2.4 mph in
club speed



HOT LAUNCH 524 SERIES

PLAY BETTER PLAY MORE



SAVE STROKES AND SAVE MONEY WITH THE #1 CUSTOM-FIT VALUE IN GOLF!

GET FIT - 524 is designed to be customized to your exact needs and with two distinct ranges, 524 offers a club for every player type from driver to wedge.

PLAY BETTER - 524 was designed to enhance your game in every way, from specs you won't find anywhere else to innovations like Diamond Face VFT, Ridgeback and VIBRCOR technologies.

PLAY MORE - The most tech for the money in golf and it's not even close! Now you can update more clubs in your bag and save money to play more golf.



BECAUSE WE WIN WITH IT.

Tour Edge

Strutting in *Sunday's* Best

Sunday Swagger Introduces New Polos, T-Shirts and Hats

JUST IN TIME for neighborhood barbecues, beach parties, and even National Hawaiian Shirt Day in August.

Sunday Swagger, the performance apparel company that never sacrifices comfort for personality, recently introduced more than two dozen new polos in a wide range of unique designs in vibrant prints, along with new t-shirts and flat bill hats.

As golf culture shifts from traditional attire to an outlet for self-expression, Sunday Swagger aims to deliver a sense of confident style coupled with comfort and durability. The polos are made with a premium technical fabric: a breathable, durable four-way stretch poly spandex blend that is moisture-wicking and wrinkle resistant, offering UPF 40 sun protection. The flat bill hats in both classic and modern designs feature moisture-wicking technology and complement any outfit. The t-shirts are 100% cotton, box fit. Sunday Swagger products are designed, packed, and shipped from their Southern California-based headquarters.

Whether playing a round of golf, enjoying a summer barbecue, or having a round of drinks with friends, Sunday Swagger's premium and bold apparel is the perfect way to express one's personal style and stand out from the crowd.

Sunday Swagger's loyalty membership community – The Sunday Club – offers members exclusive access to new designs, free shipping, increased discounts, 10% cash back on purchases, and a free welcome gift (\$20 annual fee). Visit sundayswagger.com/community/membership for more details.



SUNDAY SWAGGER

Prices start at \$28 for t-shirts, \$30 for hats, and \$59 for performance golf polos.

www.sundayswagger.com

1 Out & About Matching his and her print, offering the perfect excuse to get out of the house and party hard.
2 Clock Out Matching father and son print, inspired by the single-most important part of the work day – clocking out.
3 American Dream Perfect for those looking to display their USA pride while cheering on Team USA this August.
4 Freedom Glizzy The Freedom Glizzy T-Shirt, featuring the ultimate American hero (yes, the hot dog) because freedom means the ability to enjoy a hot dog as you take the turn to the back 9.

APPAREL & ACCESSORIES
LUXURY ACTIVEWEAR

Luxury Activewear in Real Life

The new Devon Halsey athletic collection brings active wear to inclusive fashion for the day-to-day lifestyle!

BY MICHAELLA JAYE

IF YOU ARE LOOKING for new and trendy golf attire, look no further than Devon Halsey! This fashion forward clothing line is bringing women's golf & tennis wear from "old fashioned" to runway ready. The combination of neutral blacks & whites along with the bold jewel tones, make the mix and match options endless. And the comfort and versatility factor is beyond compare. As a recreational golfer, Devon Halsey offers looks for the course but also for everyday lifestyle.

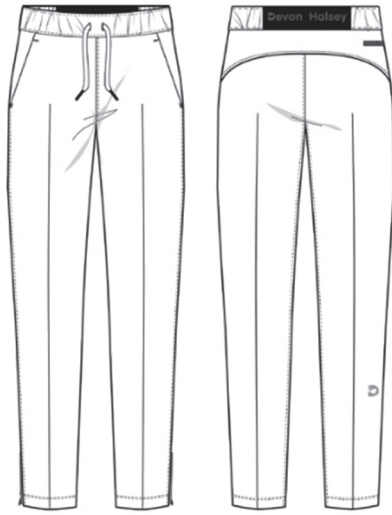
Whether you are golfing, working out or running errands, Devon Halsey pieces are perfect for all of these activities. Don't have time to switch outfits in between? Devon Halsey has you covered. Throw on a pair of their lightweight Jac Joggers and the stylish Moto Jacket and you can go from the gym to lunch without a second thought. The vibrant color options are great to match to your home team's sporting events as well. Devon Halsey is high fashion meets luxury athleisure at its best!

*For more product information
and to view the entire luxury line visit
www.DevonHalsey.com*

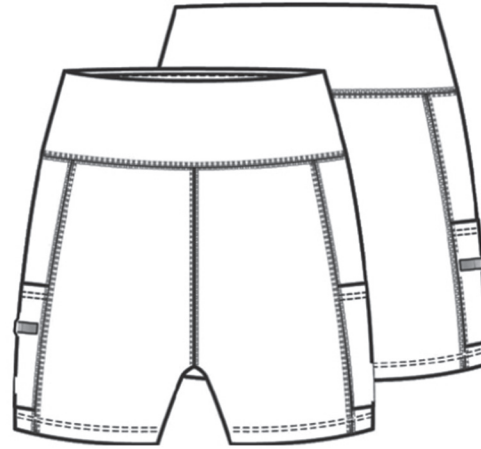


APPAREL & ACCESSORIES

LUXURY ACTIVEWEAR



1



2



3



4

1 DEVON HALSEY Jac Jogger Pant | \$295 www.devonhalsey.com

Polyester spandex 4-way stretch with comfort fit stretch, wrinkle and water resistant. Stretch velvet trim completes the look. This comfort-fit jogger pant is made from a lightweight crease-controlled fabric. It features a drawstring elasticized waistband with a black-on-black logo embossed elastic. Her details include: a flattering monochromatic back yoke, zippered ankles with rubber coated pulls, reflective piping, a reflective tee holder and a hideaway ball marker pocket.

2 DEVON HALSEY Superfly Bike Short | \$135 www.devonhalsey.com

Recycled Polyamide knit, OEKO-TEX® STANDARD 100 certified*, chlorine resistant, shape retention, compression control, UV protection, pilling resistant, 2 way stretch, antibacterial and water repellent. This supremely soft, elasticized high waist, compression bike short features two side panel pockets with our innovative reflective tee holder. Created to be worn under our “game-changing” knit skirt and stunning pique dresses. Available in matching colors to create a monochromatic fashion look and comes sweetly packed in a waterproof, matching duster bag.

3 DEVON HALSEY Moto Jacket | \$325 www.devonhalsey.com

Recycled Polyester woven taffeta with a PFC-free* water repellent coating. Filled with PrimaLoft Gold Luxe, recycled, hypoallergenic, faux down. Ribbed knit side panels and arm panels are included for a comfort stretch and compression fit. Stretch velvet trim completes the look. Devon Halsey’s personal motorcycle days are back with this “Moto” inspired fit puffer style with a magnetic tab at the neck. Includes 3 pockets accented with a seamless back pocket on the exterior to hold your card, golf balls, tees, lipstick, sunblock, etc.

4 DEVON HALSEY Jojo Collar | \$190 www.devonhalsey.com

95% USA Sourced Cotton, 5% Mongolian Cashmere, 14 gauge fully fashioned knit. Inspired by Jackie O, both warming and cooling, this super soft and sleek short-sleeved ladies “Johnny” collared sweater has a flattering collar that fits close to the neck. It features ribbed details around the neck, arms and waistband creating the illusion of a layered look.

EQUIPMENT

DISTANCE DEVICES & SPEAKERS

Drive Your Game Rock the Course

Gadgets for Distance and Sound

BY GREG SAMPSON



BLUE TEES GOLF

Player+ | \$199

www.blueteesgolf.com

The Player+ Golf Speaker is a category leader with superior visual, audio, and touch sensor GPS screen. This device is designed and engineered to redefine and elevate the golfing experience for all golfers. The Player+ GPS Speaker combines smart technology with premium audio to create an immersive sound experience. Not only does it serve as a high-quality speaker for music, but it also provides audible distances, thanks to its sleek touch screen display. The Player+ GPS Speaker can be paired with multiple speakers simultaneously, boasts an ultra-strong magnet for easy attachment to any golf cart, includes a built-in USB-C power bank, and is fully IPX7 waterproof.

BLUE TEES GOLF

Ringer | \$169

www.blueteesgolf.com

Golf is a game where knowing your distance is paramount to shooting lower scores. Blue Tees Golf wanted to innovate in the handheld GPS category. Welcome, Ringer — a fully functioning touch screen GPS handheld unit that comes ready out of the box with 40,000 golf courses pre-loaded. The pocket-sized handheld Ringer GPS with touch display provides golfers unprecedented access to their data and includes a wide variety of game enhancing features to elevate any round including: front, center & back GPS distances (to green), basic & advanced score keeping, dynamic hazards, green view, shot tracking, driving distance, player+ music controller, round summary and time & date.



BLUE TEES GOLF

Series 3 Max+ | \$199

www.blueteesgolf.com

Blue Tees Golf, a leader in golf technology, has launched the latest version of its best-selling laser series, the S3 Max+. This new model features upgraded software, advanced electronics, an improved ergonomic design, and is equipped with the company's innovative rechargeable battery technology. The upgraded S3 Max+ is equipped with a slope switch feature, allowing golfers to view slope-adjusted distances on the display. This function can be activated or deactivated to adhere to USGA regulations. The Red/Black Control button enables manual adjustment of the display color to suit your preference, depending on the lighting conditions (bright or dim). Other technical improvements include: crystal clear display, 1,000 yard, advanced flag lock and pulse vibration, active tracking, magnetic strip, waterproof USB-C and it's water resistant. The S3 Max+ Magnetic Rangefinder includes a waterproof carrying case, USB C to USB A charging cable, mountaineer buckle, microfiber cleaning cloth, lanyard, Blue Tees sticker, quick start guide and insert.



EQUIPMENT

DISTANCE DEVICES & SPEAKERS

PINNED GOLF

Caddie Combo+ | \$350
www.pinnedgolf.com

The Caddie Combo+ is the perfect addition to your golf game. It includes the brand new Prism+ Rangefinder, packed with new cutting edge software and available in 7 beautiful colors, and the Dart 2.0 Magnetic Speaker, which is available in 8 colors and has a clip for your bag. Both devices are USB-C rechargeable, so the Caddie Combo+ also includes a portable charger that works with both devices. Get dialed in with our Prism+ rangefinder while listening to your favorite music!



BUMPIN BRANDS

Bumpin Belt | \$129
www.bumpinbrand.com

Looking for a unique and memorable tee gift? The Bumpin Belt is here! Our Speaker is magnetic and interchanges with a custom buckle faceplate to showcase your tournament logo and makes for an amazing souvenir for your pro-am player to wear all year long! Our speaker sounds amazing for your personal space! The Bumpin Belt has a 7hr battery life, is water resistant, and super light weight at only 2.5oz. The perfect sound for the perfect round!



BUSHNELL GOLF

Bushnell Wingman 2 GPS Speaker | \$150
www.bushnellgolf.com

The first of its kind just got better. The Wingman 2 features high quality audio combined with having the ability to receive audible GPS distances from 38,000+ courses worldwide, through the Wingman 2 remote or speaker. The new external battery life indicator makes sure you can power through the course at a glance with Wingman 2 and the new external battery life indicator. Wingman 2 also has an even stronger BITE magnetic mount to keep your speaker in place. Finally, enjoy TWS technology which allows you to pair with another Wingman 2, Wingman View, or Wingman Mini for surround sound audio.

CYBERCART

The Future of Electric Caddies Has Arrived



It's tough on the ego to stop carrying or pushing your golf bag, but do you think that being bent over pushing a cart, or leaning to one side as you sling your bag over your shoulder is going to keep your body happy in the long run?

Or bouncing around in a riding cart all day? Getting in and out and sitting in between shots is no way to maintain a healthy back, or your heart!

Instead of wasting your energy pushing or carrying your golf clubs, finish your round strong with fresh legs and a happy back.

Introducing the future of electric caddies...the CYBERCART from Alphard Golf!

Alphard Golf, best known for its award-winning Club Booster V2 wheels that convert any standard pushcart into a remote-controlled motorized electric golf caddy, has once again taken pushcart design and innovation to the next level.

The new CYBERCART is loaded with features like an umbrella holder, cup/bottle holders, phone holder, storage net, lockable 360° swivel wheel, parking brake, even a magnetic holder for your range finder or golf towel. It features a 36 Hole plug and play battery with USB-C charging port for accessories like your cell phone, a full directional remote control with LCD display, 6-axis gyroscope straight tracking technology, anti-tip bars which prevent the cart from tipping on severe slopes, downhill

speed control and an electronic parking brake.

Because the motors are located in the wheels, the CYBERCART is one of the only motorized carts that can fold down into an extremely compact size and transported to and from the golf course.

Best of all, the CYBERCART is Bluetooth enabled for Alphard's app and compatible with accessories like Alphard's Sidekick and TFS (Tether Follow Sensor) which allow your motorized golf cart to follow you on the course without a remote.

**Special Pre-Sale Offer Available Now ...
visit www.alphardgolf.com for more information!**



Sun Mountain's H2NO Collection

Plus the All-New Ridgeline3 Adjustable Push Cart

AFTER PLAYING ONE TOO MANY

ROUNDS in the rain, the innovators at Sun Mountain applied their rainwear expertise to building a waterproof golf bag. Constructed with the same waterproof technology as their rainwear, the H2NO collection of bags is constructed using waterproof fabric, sealed seams, and water-resistant zippers.

For 40 years Sun Mountain has been a pioneer in the golf industry, revolutionizing golf bags, golf outerwear and golf carts. Sun Mountain's many innovations, including the first lightweight golf bag and modern stand bag, have made it the top golf bag company in North America. Within golf outerwear, Sun Mountain redefined golf-specific performance first with the windshirt, then fleece, and again with its four-way stretch, waterproof and breathable rainwear. The Sun Mountain Speed Cart® golf push cart transformed walking carts and created an entirely new category of golf products. Sun Mountain's "Ahead of Time Design" motto drives the company to continually design and refine golf equipment.



1



2



3



4

1 SUN MOUNTAIN H2NO 14-Way Stand | \$360 www.sunmountain.com

The new 2024 H2NO 14-Way Stand Bag offers a roomy, 8.5" top with fourteen individual dividers running the full length of the bag to organize and protect clubs. Among the bag's seven pockets are a full-length apparel pocket, cooler pocket with magnetic closure, multiple accessory pockets, and dual velour-lined valuables pockets.

2 SUN MOUNTAIN H2NO Litespeed | \$330 www.sunmountain.com

The H2NO Litespeed is the lightest

option in the waterproof golf bag collection coming in at only 4.4 lbs. with a new-for-2024, smaller, 7.5" top, updated hip pad, and a zippered water bottle pocket.

3 SUN MOUNTAIN H2NO Lite Cart Bag | \$360 www.sunmountain.com

For the cart golfer, H2NO Lite Cart Bag features a 9" top with 14 individual club dividers plus a putter tube, and seven pockets including two full-length apparel pockets, a hydration pocket, multiple accessory pockets, and a velour-lined valuables pocket. A cart strap pass-through runs behind the long pockets so the bag can be secured on a cart

without blocking pocket access. And the bottom of the golf bag is molded to fit over the lower bag rest of Sun Mountain golf push carts and minimizes side-to-side movement.

4 SUN MOUNTAIN Ridgeline3 Adjustable Three-Wheel Push Cart | \$350 www.sunmountain.com

Sun Mountain continues to be the innovator of the golf push cart market with the Ridgeline3 three-wheel push cart. Uniquely, Ridgeline3 features patent-pending Vertical Fit Technology that allows the upper bag bracket to slide up and down to accommodate different height golf bags, from junior to

adult. The adjustable strap on the upper bag bracket allows further custom fitting for a range of golf bag shapes and sizes from stand bags to cart bags. Ridgeline3 consists of a lightweight and sturdy aluminum frame that folds and unfolds in two easy steps. Standard accessories on the Ridgeline3 golf push cart include an accessory tray to hold a phone, extra balls, tees, scorecard and more, a mesh tray for head covers or a jacket, drink holder, umbrella holder and umbrella mount. Optional add-on accessories include sand/seed mix bottle, cooler, rangefinder holder, seat and many more. Ridgeline3 is available in a wide variety of colors including white, black, silver, sand/hunter, sport blue and candy pink.



Elevate Your Game with Pickleball Gear for Every Ace & Smash

HOLBROOK PICKLEBALL was founded by two brothers, Breygan and Kasen. Along with the help of their father, Brody, Holbrook Pickleball is the first pickleball brand to connect innovation and style to paddles that perform at all levels of play.

With countless hours in development, our paddles and gear fuse cutting edge technology with eye-catching design. We maintain a strong focus on relationships and community through our Team Holbrook athletes all around the world to bring them the best gear possible. Engineered for you to play better.



HOLBROOK PICKLEBALL
Mav Pro 2.0 | \$100
www.holbrookpickleball.com

Our best-selling Mav Pro paddle is back with new upgrades to take your game to the next level. This paddle features a new design, a more tactical and functional grip, raw carbon fiber face with enhanced grit, and a honeycomb core. The Holbrook Mav Pro 2.0 paddle enhances attacking power, controlled finesse, and adds cutting spin to your game. The Mav Pro 2.0 is available in a 16mm size. The 16mm paddle provides ultimate touch & control. As part of Holbrook's Pro Series Line, the Mav Pro was engineered to enhance both power and control with each shot ... for the win!

HOLBROOK PICKLEBALL
Power Pro | \$150
www.holbrookpickleball.com

The Holbrook Power Pro paddle permits extreme power and spin while keeping a controlled touch. This paddle delivers enhanced performance for elite players. The Power Pro comes in 12mm, 14mm, and 16mm sizes, giving you the paddle that best suits your playing style. With the 12mm paddle, you will experience the most pop. It's the lightest weight paddle giving players the most speed and power. The 14mm is a happy medium when it comes to size/weight of a pickleball paddle. It combines power, strength, and durability to your game. The 16mm paddle is our thickest paddle. This paddle still exhibits a great amount of power, pop, strength, and durability, but provides more of a controlled feel and forgiving sweet spot due to its thickness. As part of Holbrook's Pro Series Line, the Power Pro was engineered with revolutionary technology to amplify the power, spin, and controlled touch to your shots for next level performance. Let's keep it real – buy the paddle and your pickleball game will thank you later.



PICKLEBALL PRO SHOP

HOLDBROOK & PADDLETEK

ONE OF THE LEADING NAMES in pickleball, Paddletek has been changing the game since 2010, when they first introduced their advanced honeycomb core. Since then, Paddletek has expanded their product line with more groundbreaking innovations, like Smart Response Technology, vibration control and fine -tuning the perfect paddle for every style of player. Paddletek also offers a complete line of apparel and gear for both men and women.



PADDLETEK
Paddletek Unisex
Hoodie | \$85
www.paddletek.com

Skip warming up in sweaty cotton hoodies and reach instead for the Performance Lightweight Hooded Sweatshirt. This unisex hoodie relies on a polyester and spandex fleece construction that helps us get our muscles ready to play. This blended fabric moves with us while we stretch and wicks moisture as we start to sweat. After our first easy win of the day, we pull on the Nova Performance Lightweight Hoodie from Paddletek to keep our muscles warm. The 2-piece hood with drawstring traps heat and helps us stay warm in the wind, while the cuffs and hem lock in a secure fit, the kangaroo pocket keeps things nearby, and the printed logos show that we mean business.



PADDLETEK
Tempest Wave Pro-C | \$210
www.paddletek.com

Our best-selling paddle series is now even more formidable. The new Tempest Wave Pro-C provides a combination of spin, control, and forgiveness. PT-700 unidirectional RAW carbon fiber is combined with our more forgiving 14.3mm Tempest core to give serious players both control and max spin capability. The legendary Smart Response Technology and a large, consistent sweet spot add finesse to every shot, while the balanced weight increases speed and maneuverability for even better play.



PADDLETEK
Bantam TKO-C 14.3mm | \$230
www.paddletek.com

The Bantam TKO-C was designed in conjunction with top pickleball pro, Christian Alshon, to provide a combination of power, spin, and reach. PT-700 unidirectional RAW carbon fiber is combined with our more forgiving 14.3mm Bantam core to give serious players controllable power and max spin capability. A 16 1/2" overall paddle length increases speed at the point of contact—exponentially increasing power with every hit.



PADDLETEK
Paddletek Paddle Cover | \$15
www.paddletek.com

The Paddletek Paddle Cover will allow you to show your Paddletek pride while insulating your gear from damage. This durable soft, padded cover lets you protect your paddle from getting jostled around or nudged up against equipment that could leave a mark while transporting it. Plus it allows you to add a little extra flair to your pickleball practice look. It comes in a standard size measuring 9.5" x 11.5" and an X-Large size measuring 9" x 13" and is available in six vibrant colors. A zipper runs along half of the cover, so you can slide your paddle inside with ease and secure it safely.

PADDLETEK
Women's Performance Leggings | \$85
www.paddletek.com

Comfort and performance meet in the Women's Performance Leggings, perfect for everyday wear and on-the-court movement. This high waisted legging made of a 70% polyester 30% spandex features a hidden infinity drawcord at the interior waistband with colorways in navy, black and glacier grey. Other features include side pockets and a laser perforation design at lower legs.



Dennis, MA The Tale of Two Courses



Dennis Highlands



TEE 2 TABLE

BY MYLES MURRAY

FROM TEE

The town of Dennis, MA, has two municipal golf courses in the middle of Cape Cod that provide unique experiences and enjoyable rounds. The Pines and The Highlands courses offer unique challenges, entertainment, practice facilities, pro shops, and great food. The courses are in the same town, about 2 miles apart, but the layouts and challenges are very different.

Quality

The Pines and The Highlands courses are similar in quality because the hard-working superintendents and their staff do an amazing job maintaining all areas of the

course. The tee boxes are expertly level, and the grass is cut down to the proper length.

The fairways are equally magnificent and provide soft, plush landing areas for tee shots. The greens at both courses are immaculate, with low cut grass that is rolled to perfection. Both courses utilize the natural surroundings to provide classic Cape Cod views throughout.

Playability

The courses are designed to be playable for all types of golfers by providing multiple sets of tees and yardages ranging from 4884 to 6931 yards.

The Pines course is appropriately named because the narrow fairways are lined by 40' tall trees on both sides. This course is one of the narrowest in the state and requires accuracy off the tee and with approach shots. Most of the trees are spaced out so even if you hit it off the fairway you usually have the option to chip out back to the fairway. The make-or-break point in

anyone's round is when you start on the back nine. Holes 10 and 11 do a ying-yang around a large pond, creating very curvy doglegs that have the threat of going O.B. Hole 12 is a long par-5 shaped like a boomerang that demands iron off the tee and then maybe a hybrid or wood to reach the green after your second shot.

The Highland course is more open, but the slopes and tiers of the fairways create some strategy off the tee. Once you get to your approach shot you should try to look at the layout of the green. There is a variety of false-fronts, slopes, and tiers you must deal with once you make it to the dance floor. The greens at this course, and if you can avoid 3-putts, will determine how low your score can go. The course plays a little easier than the Pines, but there is still plenty of challenge to the layout.

Amenities

Both courses have practice greens and



driving ranges right outside the clubhouse doors. The Highlands has an all-grass range while The Pines has mats. The Pro Shops are fully stocked with golf gear, equipment, and clothing. The courses have water-filling stations throughout the round, which are very convenient on hot summer days, and the golf carts at both have the most comfortable cushions on the Cape.

TO TABLE

The Pines and The Highlands each have a full restaurant and bar. The Par Bar at the Pines, and The Eagles Nest at the Highlands are not to be missed for great grub and drinks whether you play a round or stop in for a meal or take-out.

Food and Drink

The menus at both restaurants are similar with many options for both breakfast and lunch. At the Par Bar at Dennis Pines, I enjoyed an iced coffee to-go while waiting to

start my round. I didn't have time to get a coffee on the way to the course, so I appreciated the convenience of buying one there. If you want something to eat before your round at either course, you can order a quick breakfast sandwich, bagel, or tater tots.

Having restaurants and snack shacks on the 10th tees, you have plenty of choices to fill you up. The snack shacks have hot dogs in addition to traditional granola bars, candy, snacks, and drinks (regular and alcohol included). You can also call into the restaurants and have your sandwich ready by the time you arrive at the turn.

When the round was over, I was starving and the food did not disappoint. Our group tried the BLT, The Water Hazard (Tuna melt), The Slice (Pastrami and Swiss), and their most popular, The Sandwedge. The Sandwedge is a mouthwatering sandwich with thinly sliced turkey on top of bacon, lettuce, and tomato. The onion rings

on the side were unbelievable also. But what sets apart the sandwiches is the sourdough bread. Every sandwich has a buttered, crispy crust with a slightly tangy dough – they were incredible.

Atmosphere

While the two restaurants differ in size, they are the same in the atmosphere and sense of community among the golfers. The Eagles Nest at Dennis Highlands is larger and more suited for small events like a work conference or wedding shower. The Par Bar at Dennis Pines is more intimate and perfect for a dinner with friends. Actually, that is just what the folks have done with The Par Bar on Thursday nights. When local restaurant Gina's by the Sea closed after 44 years, the management at Dennis Pines wanted to continue the tradition of good food and community. Now, folks attend Gina's night on Thursdays and enjoy classic Italian dishes like chicken parm and lasagna.

Top-Tier Golf Tournaments Put Big Emphasis on Community

This continues to be an extraordinary season of golf in the northeast with high level tournament competition sprinkled all over New England. The Travelers Championship in Hartford, CT, June 20-23, The USGA Senior Open in Newport, RI June 27-30, and the LPGA FM Global at TPC Boston Labor Day weekend highlight the links slate.

These tournaments, however, are not just about tees and trophies, they are about involvement and impact. While fans flock to the fairways to watch the world's best players, the

tournaments and courses have a greater good in mind for sure, namely, charity and community outreach.

Travelers Triumphs

The Travelers Championship, held in 2024 at TPC River Highlands in Cromwell, CT, has always been one of the truly anticipated events on the PGA TOUR, but its underlying purpose is even more special. The tournament has always embraced the mission of giving back, providing a direct

The Travelers Championship



impact on hundreds of nonprofit organizations.

One of these is the Connecticut-based Hole in the Wall Gang Camp, which serves children and families coping with cancer and other serious illnesses. The program was founded in 1988 by the late actor Paul Newman. It provides what the team calls “a different kind of healing” to more than 20,000 seriously ill children and family members annually, all completely free of charge.

Hole in the Wall provides multiple Camp experiences throughout the year. Says Camp CEO Jimmy Canton, “The Travelers Championship has provided Hole in the Wall with a local and national platform to share our story, allowing us to build greater awareness for our year-round programming.

“Thanks to this partnership, we have been able to expand our programming to serve more seriously ill children while also providing deeper levels of care to their families.”

Each summer, The Hole in the Wall Gang Camp provides camping experiences that incorporate needed medical care. Campers participate in horseback riding, fishing, archery and other activities, discovering that they are more than just their respective illnesses and forming valuable friendships.

Throughout the rest of the year, the Camp hosts family weekends and sets up hospital outreach visits in more than 40 locations across the northeast. This is the true impact of The Travelers Championship. Since 2023, the tournament has donated more than \$3 million to over 180 regional charities with more than \$52 million donated since 1952.

Senior Successes

The 2024 USGA Senior Open at Newport Country Club is a jewel in the USGA crown, and what a crown it is. Over 45,000 golfers compete in the USGA's 15 championships, but the USGA's higher calling is growing and preserving the game of golf and the environment.

Ten of the fifteen USGA's events are solely for amateur players, and the USGA Golf Museum and Library contains 80,000 catalogued artifacts, 100,000 library items, 750,000 photographs, and 200,000 hours of footage.

Through tournaments like the Senior Open this summer in Newport, the USGA invests \$2 million annually in community golf growth including programs like First Tee, LPGA*USGA Girls Golf and Drive, and Chip and Putt. They also provide a \$2 billion annual economic benefit to U.S. golf courses through USGA-funded turfgrass and sustainability research.

The USGA has made a sizeable investment in course consulting and championship agronomy. Its Green Section

initiative focuses on rising water costs, water supplies, and the water restrictions that pose a threat to local golf courses.

Proceeds from events such as the Senior Open help golf course operators contend with these crucial community water issues through research and technology. The USGA and its tournament partners champion water conservation measures by tailoring solutions to each specific region.

Over the next decade and a half, the USGA will invest over \$30 million working on directives that local golf courses like many in the Newport area can use to effectively conserve water.

Global Good

The LPGA FM Global at TPC Boston Labor Day weekend will showcase the best in women's golf at one of the northeast's most beautiful and challenging courses. TPC Boston is located 25 miles south of Boston and 30 minutes north of Providence, putting it in a unique position to make a difference in both inner city and suburban communities.

Tournaments held at TPC Boston support local charitable initiatives including outreach to the Hockomock YMCA with various branches in Massachusetts. TPC Boston sponsors the Hockomock YMCA's integration initiative program giving special needs participants an opportunity to interact with peers in programs and activities.

Participants in the program take part in golf clinics getting tips on driving, chipping, and putting with TPC Boston golf pros. The participants then experience TPC Boston itself by playing many of the course's iconic holes.

TPC Boston has also partnered with Make-A-Wish of Massachusetts and Rhode Island to provide children with the opportunity to visit during the Dell Technologies Championship. Guests receive VIP treatment and are able to watch the tournament from the best viewing points.

Participants also get access to the Clubhouse, views of the NBC Television Towers, up close looks at TOUR Player interviews, and the chance to meet PGA TOUR stars.

There is no doubt that events like The Travelers Championship, The USGA Senior Open, and the LPGA FM Global are about the best in golf, but more crucially, these regional events also bring out the best in philanthropy and dedication to community.

John Molori is an author and columnist for numerous publications. Like him on Facebook at John Molori, X @MoloriMedia. Email molorimedia@gmail.com.



**READY
FOR YOUR
NEXT COURSE?**

Photo Credit: @MajkaMedia

The Omni Mount Washington Resort in New Hampshire's majestic White Mountains is a golf-lovers paradise, where 27-holes of golf and abundant recreational activities await.

The award-winning Donald Ross-designed Mount Washington Course is an 18-hole, Par 72 classic which first opened in 1915, and was restored in 2007 based on the master architect's original plans. Shadowed by the towering Presidential Mountain Range dominated by the resort's namesake, along with with more stunning views of the nature-formed Crawford Notch, it may be difficult to keep your eye on the ball on the course *Golfweek* has named the #1 Course You Can Play in the state since 2009.

The smaller, but arguably just as mighty, 9-hole Mount Pleasant Course originally opened in 1895 and was restored in 1989. Today it offers a challenging Par 35 round alongside the Ammonoosuc River, an ideal course for those who may want to reserve some extra time to explore the many other offerings at this National Historic Landmark resort. A full-service Pro Shop with lessons, retail, club rentals and restaurant, along with practice green and driving range, further enhance the golf experience.

From a full-service Spa, pools, fishing, biking and scenic gondola rides, to a high-flying canopy tour, climbing and hiking for the more adventurous, there's no shortage of options before or after you hit the links.

To fuel up for all the fun, there are culinary diversions around every corner. Visit the lofty 1902 Main Dining Room or popular Stickney's Restaurant for New England-inspired cuisine and

craft cocktails, or enjoy the casually upscale dining experience at the 1896 Bretton Arms Dining Room and Wine Bar. The mountain-top Switchback Grille serves up tasty lunch and Sunday Brunch, while The Grille at The Clubhouse is sure to please before or after your round. At the end of the day, a visit to The Cave – an authentic former speakeasy – is a must.

Choose from a variety of accommodations to complete the resort experience, with the historic Omni Mount Washington Hotel to the lovely Omni Bretton Arms Inn, and even multi-bedroom Townhomes for golfing buddies. For a truly elevated experience, the Presidential Wing adjacent to the Mount Washington Hotel offers private balconies or patios, mountain views and access to the Presidential Lounge with complimentary continental breakfast and afternoon refreshments.

The resort's Unlimited Golf Package is just that... golf all you can including cart from day of arrival through day of departure. For the more casual golfer, resort guest discounts are available as well as seasonal specials like Nine & Dine, including nine holes of golf Sunday-Thursday after 3pm with lunch or dinner at The Grille from just \$75.

So what are you waiting for? Reserve your stay at the legendary Omni Mount Wahington Resort today, just 2.5 scenic hours from Boston.

omnihotels.com/mountwashington
800.THE.OMNI [843.6664]
Tee-times: 603.278.GOLF [4653]



▲ A stay in the Presidential Wing is sure to elevate your golf getaway with mountain and golf course views from private balconies.

◀◀ It might be hard to keep your eye on the ball with views like this.

◀ Majestic Mount Washington shadows golfers on the namesake's 18-hole Donald Ross Course.



NEW ENGLAND MOUNTAIN GOLF AT ITS BEST

EIGHT GREAT COURSES TO STAY & PLAY

The White Mountains of New Hampshire are the perfect backdrop for Mt. Washington Valley's eight golf courses. These are some of the most prestigious and scenic courses in all of New England! With well over 100 holes of golf to play, they offer acres and acres of green that showcase technical courses designed by giants in the industry.

From challenging 9-hole family courses to 18-hole championship venues each beautifully designed course is distinctly different, "one of a kind", offering a true test of golf skills at every level. From courses set at historic grand hotels, others that cross covered bridges and vintage train tracks, and all with stunning mountain views, the biggest challenge just may be keeping your eye on the ball when surrounded by some of the

most beautiful scenery in the world!

Stay & Play in Mt. Washington Valley

From spring greens to brilliant fall foliage, golfers have three seasons to enjoy their favorite pastime. Add in first-class lodging, amazing casual to fine dining, family attractions, a cool arts scene, and much more for a Stay & Play experience to elevate your game. Wherever you are you'll be minutes to a spectacular course. With all nine courses 5 to 45 minutes of North Conway Village you can easily play one, two, or more during your stay.

**For more information visit GolfMWV.com
or call the Mt. Washington Valley Chamber
of Commerce at 603-356-5701**



**Androscoggin Valley
Country Club
Gorham, NH**

In the “Great North Woods,” one of the most invigorating and scenic golf courses in New Hampshire. Endless mountain views and forest.
avccgolf.com



**Bridgton Highlands
Country Club
Bridgton, ME**

Views of Pleasant Mountain, New Hampshire’s White Mountains, and Mount Washington. Great family facility with multiple tee choices.
bridgtonhighlands.com



**Hale’s Location Golf Course
North Conway, NH**

A spectacular 9-hole, par 36 course. Golfers will find long fairways, several water hazards and carefully placed sand traps. Great views and meticulous ground.
haleslocationgolf.com



**Indian Mound Golf Club
Ossipee, NH**

One of Mt. Washington Valley’s most popular golf courses. This par 70 course features gentle rolling terrain; a “good walk,” they say. Located in Center Ossipee.
indianmoundgc.com



**Wentworth Golf Club
Jackson, NH**

In Jackson Village with views of the Presidential Range along the Wildcat and Ellis Rivers. Enjoy Madeline’s Deli at the club, visit Red Fox Bar and Grille down the road.
wentworthgolf.com



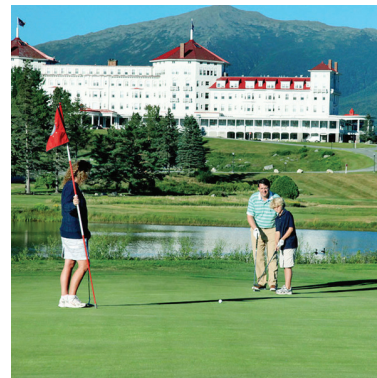
**Province Lake Golf Club
Parsonsfield, ME**

“One Scenic 18” classic golf with outstanding modern design. Throughout the course’s 18 holes you’ll be treated to spectacular views; great practice facility.
provincelakegolf.com



**Eagle Mountain House
& Golf Club
Jackson, NH**

One of New Hampshire’s oldest and historic hotels overlooking Jackson Village along the Wildcat River. One of the prettiest 9-hole courses. A step back in time.
eaglemt.com



**Omni Mount
Washington Golf Course
Bretton Woods, NH**

18 holes, par 72, 7,004 yards. It has been regularly voted as “One of the Best Courses You Can Play” in NH. Designed by legendary Scottish Architect Donald Ross, a must play!
omnihotels.com





OWL'S NEST RESORT 2024

MORE GOLF, NEW HOMES & NEW AMENITIES

There are few places anywhere in the Northeast that offer the extensive four-season activities and amenities as the Owl's Nest Resort in Thornton, New Hampshire. It has truly become one of New England's favorite resorts for travelers who want to literally have it all in one convenient location in the heart of the White Mountains National Forest.

Spring/ Summer Golf Season Begins

We are preparing for another great season of golf at the Owl's Nest. Our Jack Nicklaus Resort Course is the only Nicklaus course in New Hampshire and one of only four in New England. The course was named #6 best Nicklaus-Designed course by value worldwide by NBC Golf Pass which considered 400+ design courses in 40 states and 45 countries throughout the world. The course at Owl's Nest sits among the magnificent White Mountains, giving golfers the ultimate scenic vistas throughout the season. From the serious to the casual golfer, elevation changes and pristine conditions show off Owl's Nest's charm and challenge. The newly branded Owl's Nest Vineyard Course (formerly White Mountain Country Club) is currently undergoing a course redesign under the supervision of Robert McNeil and Northeast Golf Company. The Vineyard Course will also have a 10-acre vineyard, a new restaurant, func-

tion facilities, and new townhomes are also planned at the property. Also underway is The Hoot, a new 9-hole championship course. There will be 45 holes for golf enthusiasts at the resort when completed, the most at any resort in New England.

New Updates on Resort Expansion Plan

The Owl's Nest has just opened Slice Woodfire Pizzeria & Sports Bar, featuring 10 wide-screen televisions, and two new aboutGOLF Golf Simulators. aboutGOLF offers the very best in indoor golf technology. Watch your favorite sporting events while playing some of the best golf courses in the world with friends and family. The new sports bar is located adjacent to the resort's main restaurant Panorama Six82, it is rated #1 in the White Mountains by the NH Lodging and Hospitality Association. The vision that has empowered the redevelopment of this truly beautiful location has been carefully conceived to create the ultimate vacation and living experience in the Northeast for all seasons and all celebrations of life and family, it is a very special place. Not only is The Owl's Nest the fastest-growing resort in New England, but it is also the perfect serene setting for weddings, events, and corporate outings, with proximity to all major attractions in the region. The Owl's Nest expansion and extensive ongoing development

and growth have now made the facility the largest four-season destination resort in the Northeast. The resort and living community offer a vast array of amenities for every season and unparalleled choices of rental homes, cottages, condos, hotel rooms, and suites to choose from for couples, groups, and families. There are few places anywhere in the Northeast that offer unprecedented choices for golf, four-season vacationing and living, and full-service amenities and recreational opportunities every month of the year. The new Lafayette Lodge has now opened at the resort offering 9 king rooms and 24 double queen-sized rooms and new accommodations are in the planning stages as well.

Four Season Fun and Resort Amenities

The Owl's Nest is truly a full four-season resort so there is never an offseason here at the Nest. The Owl's Nest is home to 25 racquet courts including 8 clay tennis courts, 13 pickleball courts, and 4 radiant heated platform tennis courts. The resort's Lake Harold is the largest man-made recreational lake in New Hampshire. Fishing, boating, swimming, paddleboarding, and other watersports are all offered at the facility. In addition, the resort has added a new Olympic-sized pool and Jacuzzi complex adjacent to the newly completed Boathouse. It currently features an outdoor swimming pool and jacuzzi, boat rentals, indoor and outdoor showers, radiated heat decks, locker room facilities, and beach access, with plans to open a poolside bar and seafood restaurant. The resort's main restaurant, Panorama Six82, is open

daily for lunch and dinner, Slice Sports Bar & Pizzeria with games and golf simulators, and Butch's Deli & Provisions for snacks, supplies, and lighter fare. If you have gone electric with your ride, there are 10 Tesla superchargers at the resort for quick charging.

The Owl's Nest Living Community

The Owl's Nest master plan organizes the homes around communal outdoor spaces all connected by multi-use trails. At Waterscapes each home is nestled perfectly throughout the resort, giving you spectacular views of the White Mountains. The proximity of the Owl's Nest gives you full access to all the White Mountain's major attractions and tourist areas while living in a quiet private resort community. These new mountain homes offer open floor plans, light-filled homes, designed with luxury features, and modern conveniences for perfect four-season mountain living. www.waterscapesnh.com

The Owl's Nest Resort is in New Hampshire's White Mountains, less than two hours north of Boston and one hour from Manchester-Boston Regional Airport. The Nest is situated on 600+ acres with spectacular panoramic mountain and forest views.

For more information on Owl's Nest Resort, please visit www.owlsnestresort.com or call us @603.726.3076



WHITE MOUNTAIN FOUR-SEASON RESORT LIVING

WATERSCAPES

AT THE OWL'S NEST RESORT



The art of living is best described by where we choose to live and what surrounds us in our daily lives. John Muir, once said, "Going to the Mountains is Going Home". A home in the mountains is truly very special, to celebrate life, connect, and to enjoy the true majesty of living well. The White Mountain National Forest, established in 1918, it is one of our country's most pristine protected lands, and is comprised of over 750,000 acres, mostly in New Hampshire. Its summits are part of the Presidential Range name after U.S Presidents. The region is home to more four-season living and recreational activities than anywhere along the East Coast. It is ranked the #1 most beautiful forest in the Country.



The Beautiful Owls Nest Resort Community is in the heart of the White Mountain National Forest, just south of Woodstock. Owls Nest us the fastest growing resort living community in the Northeast, nestled in the quaint village of Thornton, New Hampshire. This carefully planned master community is under the vision of Brian Lash and the team at LM Asset Management. They have created a truly unique vacation and living experience in the White Mountains. Vacationing here, and more specifically living here is simply amazing. From the ever-expanding resort, with a vast, amenities, to the exquisite Waterscapes vacation, and year-round homes for living at the resort, the Owls Nest has

become the place to be in every season.

Living At the Owl's Nest Resort

Easy access to the Owls Nest is one of the key advantages of living here, it is just a few minutes off Interstate 93, and close to all White Mountain attractions. Living here offers residents the convenience of being just two to three hours from Boston, Providence, Hartford and just four hours to metro New York, New Jersey regions. The Resort is just minutes from Waterville Valley, Loon Mountain and other Northeast winter sports hubs, all while enjoying a private pristine community atmosphere. There us tru-

ly something for everyone in every season here at the Owls Nest. With only Jack Nicklaus designed golf course in New Hampshire and soon to open, the newly reimagined Owls Nest Vineyard Championship Course, it is a golfer's paradise. The resort has one of New England's best racquet sports complexes with 8 clay courts for tennis, 4 radiant heated platform tennis courts, and 13 pickleball courts. The Owls Nest has been ranked the "#2 Pickleball Resort in the World" and is led by a championship team for instruction and numerous pickleball tournaments.

The resort's Lake Harold is the largest man-made recreational lake in New Hampshire. Fishing, boating, swimming, paddleboarding, and other watersports are all offered at the facility. In addition, the resort has added a new Olympic-sized pool and Jacuzzi complex adjacent to the newly completed Boathouse. It currently features an outdoor swimming pool and jacuzzi, boat rentals, indoor and outdoor showers, radiated heat decks, locker room facilities, and beach access, with plans to open a pool-side bar and seafood restaurant. The resort's main restaurant, Panorama Six82, is open daily for lunch and dinner, Slice Sports Bar & Pizzeria with games and golf simulators, and Butch's Deli & Provisions for snacks, supplies, and lighter fare. If you have gone electric with your ride, there are 10 Tesla superchargers at the resort for quick charging.

A Home in The White Mountains

The Owl's Nest master plan organizes the homes around communal outdoor spaces all connected by multi-use trails. At Waterscapes each home is nestled perfectly throughout the resort, giving you spectacular views of the White Mountains. These new mountain homes offer open floor plans, light-filled homes, designed with luxury features, and modern conveniences for perfect four-season mountain living.

For information on Living at The Owl's Nest, call 603.779.5758 or go to www.waterscapesnh.com



South Lake Townhomes



North Lake Custom Home

The Owl's Nest Resort is in New Hampshire's White Mountains, less than two hours north of Boston and one hour from Manchester-Boston Regional Airport. The Nest is situated on 600+ acres with spectacular panoramic mountain and forest views.

For more information on Owl's Nest Resort, visit www.owlsnestresort.com or call 603.726.3076





OWL'S NEST

THE WHITE MOUNTAINS

Escape to the beautiful
White Mountains in Tax-Free
New Hampshire.

We're re-imagining mountain life with luxury
homes in two distinct neighborhoods, all less
than two hours from Boston.

No.

2

PICKLEBALL RESORT
WORLDWIDE

2023 Gold Medal Winner
Tennis Resorts Online

No.

6

NICKLAUS GOLF COURSE
WORLDWIDE

For Design+ Value
Golf Channel/Golf Pass

No.

1

WHITE MOUNTAIN
RESTAURANT

NH Lodging+ Hospitality
Association

Now selling

WATERSCAPES AT OWL'S NEST **South Lake Townhomes & North Lake Residences.**



Seize the opportunity to make luxury resort living your reality.

Owl's Nest is just 15 minutes from Waterville Valley, 20 minutes to Loon and 25 minutes to Cannon Mountain.

Enjoy resort amenities like two 18-hole championship golf courses, 4 paddle, 13 pickleball and 8 red clay tennis courts, an outdoor year-round Olympic heated pool and hot tub, Lake Harold, four fantastic restaurants, WellNest Spa and Rejuvenation Center, Technogym fitness center, and much more.

Owl's Nest Resort, 40 Clubhouse Lane, Thornton, NH

WaterscapesNH.com | 603-779-5758 | OwlsNestResort.com



Four
Seasons

Sotheby's
INTERNATIONAL REALTY

FSSIR | 273 Daniel Webster Highway, Meredith, NH | o. 603.677.7012

Some renderings, images, plans, and amenities are conceptual artistic representations only, are not to scale, and are subject to change at any time without notice or obligation. © 2024 Waterscapes. Equal Housing Opportunity. Sotheby's International Realty and the Sotheby's International Realty logo are registered (or unregistered) service marks used with permission. Sotheby's International Realty Affiliates LLC fully supports the principles of the Fair Housing Act and the Equal Opportunity Act. Each Office is Independently Owned And Operated.



WATERSCAPES

at Owl's Nest

South Lake Townhomes & North Lake Residences.

*Limited homeownership opportunities
available starting from the \$600's!*



Owl's Nest Resort, 40 Clubhouse Lane, Thornton, NH

Meet with our expert Sales Team, Tour the Models, and more!

WaterscapesNH.com | 603-779-5758 | OwlsNestResort.com



Four
Seasons

Sotheby's
INTERNATIONAL REALTY

FSSIR | 273 Daniel Webster Highway, Meredith, NH | o. 603.677.7012

Some renderings, images, plans, and amenities are conceptual artistic representations only, are not to scale, and are subject to change at any time without notice or obligation. The condominium project shown/depicted/referenced is not yet registered or exempted from registration by the New Hampshire Attorney General's Office, and until such time as registration or exemption from registration is ordered, no binding contract for the sale or lease of any unit or other interest therein may be created or entered into. © 2024 Waterscapes. Equal Housing Opportunity. Sotheby's International Realty and the Sotheby's International Realty logo are registered (or unregistered) service marks used with permission. Sotheby's International Realty Affiliates LLC fully supports the principles of the Fair Housing Act and the Equal Opportunity Act. Each Office Is Independently Owned And Operated.