

# NEW ENGLAND HOME SHOWS

*coastal, suburban, city and mountain living*

## COASTAL CUSTOMIZATION

On Aquidneck Island

BY JPS CONSTRUCTION AND DESIGN, INC



**IT'S SHOW TIME**

Foxboro | March 22-24

Topsfield | April 20-21

NEWENGLANDHOMESHOWS.COM



# RENEE WELCHMAN



**WELCHMAN**  
real estate group

has proudly  
joined...

**Lila Delman**  
EST. 1964

**COMPASS**

## Top Agent, Renee M. Welchman, Joins Lila Delman Compass

*A New and Greater Team Commitment to Excellence and Professionalism*



**Renee M. Welchman, CPA**  
Associate Broker

***"I am ecstatic for my brand to be Powered by Compass, the Nation's #1 Real Estate Brokerage and Lila Delman, Rhode Island's #1 Luxury Brokerage firm. Our local expertise combined with Compass' robust Tech platform will give my clients a clear edge in the market and expands our capabilities and reach."***

At Welchman, we take a different approach to real estate. Our foundation is built on personal touches, win-win deals, and positive results. We thrive on collaboration, using a unique blend of technology, pioneering innovation, and good old-fashioned work ethic. Renee, founder and CEO, has carved an impressive niche in the real estate industry through her unwavering commitment to excellence, visionary leadership, and an unquenchable passion for real estate investment, advisory, and wealth planning for her clients. Renee M. Welchman and Welchman Real Estate Group are your trusted partners in your real estate journey. Whether you're buying or selling a property, we're dedicated to providing you a business-forward, client-centric experience. We appreciate the opportunity to earn your business and look forward to partnering with you on your home sale or purchase journey.

## A Legacy of Providing Unsurpassed Service and Performance



Tiverton, RI \$1.1M



Little Compton, RI \$1.2M



Tiverton, RI \$1.2M



Acushnet, MA \$1.25M



Little Compton, RI \$1.45M



Little Compton, RI \$1.63M



Dartmouth, MA \$1.7M



Tiverton, RI \$1.75M



Little Compton, RI \$1.8M



Westport, MA \$2M



Westport, MA \$2.85M



Little Compton, RI \$3.05M



Newport, RI \$3.1M



Little Compton, RI \$3.55M



Little Compton, RI \$3.8M



Little Compton, RI \$4.88M

**401.649.1915 | [Renee.Welchman@Compass.com](mailto:Renee.Welchman@Compass.com) | [WelchmanRealEstate.com](http://WelchmanRealEstate.com)**



# RENEE WELCHMAN



**WELCHMAN**  
real estate group

*has proudly  
joined...*

**Lila Delman**  
EST. 1964

**COMPASS**



## **South Tiverton, Rhode Island: The Secret Coast**

New Construction | 8,000+ sq. ft. of living in this authentic slate shingle-sided home is an immersion of modern design, style & functionality. This is a dream come true for lovers of modern architecture. Expansive westerly water views from every room of the Sakonnet East Passage and Seapowet marshes and farmland. Every detail of this 3-story, 4 bed, 6.5 bath home has been carefully designed and no expense has been spared. Clean simple lines, custom craftsmanship, luxurious finishes. **\$4.995 million**

## **SUMMER AND SEASONAL COASTAL RENTALS**



**1172 Anthony Road, Portsmouth, RI**  
Portsmouth Waterfront  
3 bedroom / 3 bath



**6 Beach Drive, Little Compton, RI**  
Chace Point, Little Compton  
3 bedroom / 3 bath



**126 Round Pond, Little Compton, RI**  
Little Compton, Round Pond  
4 Bedroom / 4.5 bath

**401.649.1915 | [Renee.Welchman@Compass.com](mailto:Renee.Welchman@Compass.com) | [WelchmanRealEstate.com](http://WelchmanRealEstate.com)**





**Close to Sakonnet Golf Club, Newport Country Club,  
Newport National Golf Club & Montaup Country Club**

RENEE M. WELCHMAN | 401.649.1915 | [Renee.Welchman@LilaDelman.com](mailto:Renee.Welchman@LilaDelman.com)

**Lila Delman**  
— EST. 1964 —

**COMPASS**





## **South Tiverton, Rhode Island: The Secret Coast**

*Modern Luxury / Sakonnet River East Passage*

*New Construction | Over 8,000 square feet of living in this authentic slate shingle-sided home is an immersion of modern design, style, and functionality. This is a dream come true for lovers of modern architecture. Enjoy expansive westerly water views from every room of the Sakonnet East Passage and Seapowet marshes and farmland. Every detail of this 3-story, 4 bed, 6.5 bath home has been carefully designed and no expense has been spared, down to the teak elevator. Clean simple lines, custom craftsmanship, luxurious finishes and every element within, both natural and durable, further enhance the home's appeal. Open concept living with soaring ceilings, floating staircases, and floor-to-ceiling windows, allows the natural light to flow through and brings the beauty of the surroundings inward. The chef's kitchen & butler's pantry are all outfitted with high-end appliances, stainless counters, and smart built-ins. Additional 1st floor rooms include a study, foyer, and east wing with 2 ensuite bedrooms and a sitting room. The primary suite is accented with soaring ceilings, fireplace, balcony, custom dressing room, and 2 ensuite baths. Additional rooms include a guest bedroom, spa bathroom, and laundry room. The finished ground level was built for activity and entertainment with access to the patio. This home is fully automated from your phone or tablet. The Farm Coast area comprises quaint coastal villages with charming cafes, art galleries, eateries, boutique shops, and is just minutes away from pristine beaches and marinas.*



## 205 WINTER ST. NORWELL, MA

5 beds, 4.5 baths, 3 car garage | \$2,295,000

Johnny Hatem Jr. > 508-524-3634 > Douglas Elliman Real Estate



## 84 DIVISION ST. NEWPORT, RI HISTORIC HILL

5 beds, 3.5 baths  
w/ guest house  
\$3,500,000

EJ Lanni > 857-241-9287  
HUS Companies



## 219 CURVE ST. DEDHAM, MA

Coming Soon. Fully renovated.

3 beds, 2 baths, Office. Detached garage.

Greg Martin > 774-266-0693 > Move Forward RE

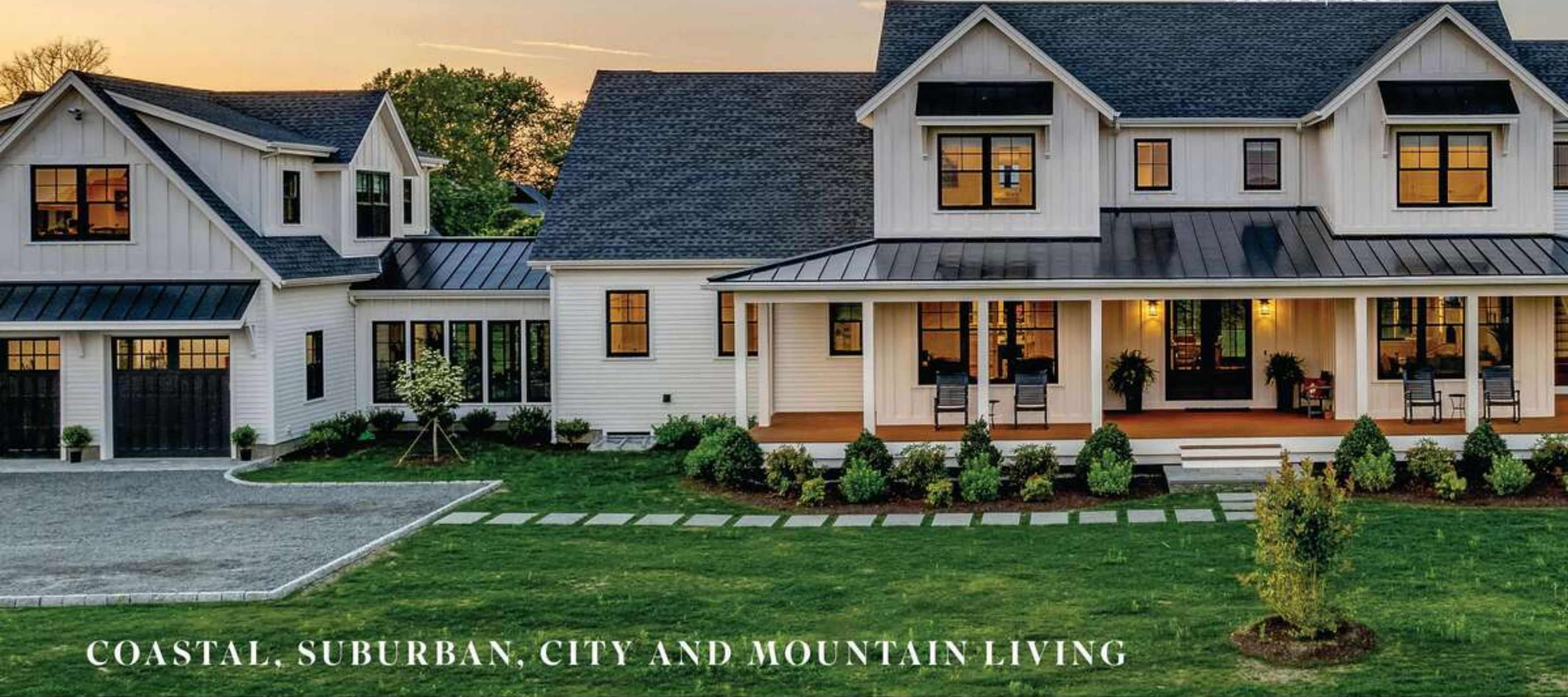
## 181 Honeyman Ave Middletown RI

Fully renovated two story modern farmhouse. Just minutes from beaches. 5 Beds, 3.5 Baths, 2 Car Garage, 1 Acre. Avail. Spring 2024. Kate Wilson > 774-263-5385 > Hogan RE



inside

SPRING 2024  
VOLUME 6 | ISSUE 1



COASTAL, SUBURBAN, CITY AND MOUNTAIN LIVING

## 12 **COVER STORY** JPS Construction and Design, Inc.

### TURNING DREAMS INTO REALITY

*JPS recently finished a new-home construction project which evokes their dedication to detail and high-quality work. Every feature in this home was crafted with care and done to the exact specifications that their client was looking for. The end result: a one-of-a-kind home that showcases thoughtfulness and careful craftsmanship.*

**SUBSCRIBE FREE AT:**  
NEWENGLANDHOMESHOWS.COM

**FOLLOW US ON SOCIAL:**  
@NEHOMESHOWS



16

**LIVING IN** • Newport County, RI  
**A Special Slice of Life**



30  
**TRAVEL  
& LEISURE**  
Pickleball for All



38  
**MARKETPLACE**  
Down the  
Cape Cuisine



# NEW ENGLAND HOME SHOWS



## Editor

Timothy R. Branco  
tim@nepubinc.com

## Creative Director

Katrina T. Lallier

## Editorial

Timothy Branco  
Brittany Rayburn  
Greg Sampson

## Published by:



Formerly New England dot Media  
& New England Publishing Group

## CEO/Managing Partner

Richard Castiglione  
rich@hglmedia.com

## CMO/Managing Partner

Greg Sampson  
greg@hglmedia.com

## Customer Service

Jeanne Castiglione  
Brittany Mastroianni  
Michaela Sampson  
custserv@hglmedia.com

## For Editorial & Advertising Requests:

Editorial: 774.930.1623 - Tim Branco  
Advertising: 757.621.7494 - Greg Sampson  
Shows: 508.942.7340 - Rich Castiglione

## Subscriptions

\$29.99 annually for 4 issues  
subscriptions@hglmedia.com

© 2024 Home Golf Lifestyle  
Media LLC. Reproduction without  
permission is prohibited. The articles  
appearing within this publication  
reflect the opinion of their respective  
authors and not necessarily those of  
the publisher.

## From the Editor

# Introducing *New England Home Shows Magazine*



"Our team is  
constantly  
finding ways  
to ... expand  
opportunities."

**HOME SHOWS** are great gatherings of businesses and consumers to showcase products, stimulate fresh ideas and introduce the newest innovations, services, and technologies in the market today. Homeowners and prospective homeowners attend numerous Home Shows each year to plan for projects, review new products for their homes, and meet with financial firms for home refinancing for improvements, and new home purchasing. They are great events for businesses and consumers to interact and connect.

Home Golf Lifestyle Media Group partners with Castle Events each year to produce four New England Home Shows in Marlboro, Foxboro and Topsfield, MA, and Lincoln, RI. We also produce the Northeast Golf Show at Gillette Stadium in Foxboro, MA, every March. Our shows are the largest and most attended events in the region. More than 100,000 affluent consumers attend these shows from all over New England each year ready to kick off their spring with a new purchase. One of the largest distribution channels for Coastal Home Life Magazine and Northeast Golf Magazine annually has been the home and golf shows each year, as our publications are available at all shows and numerous vendor booths.

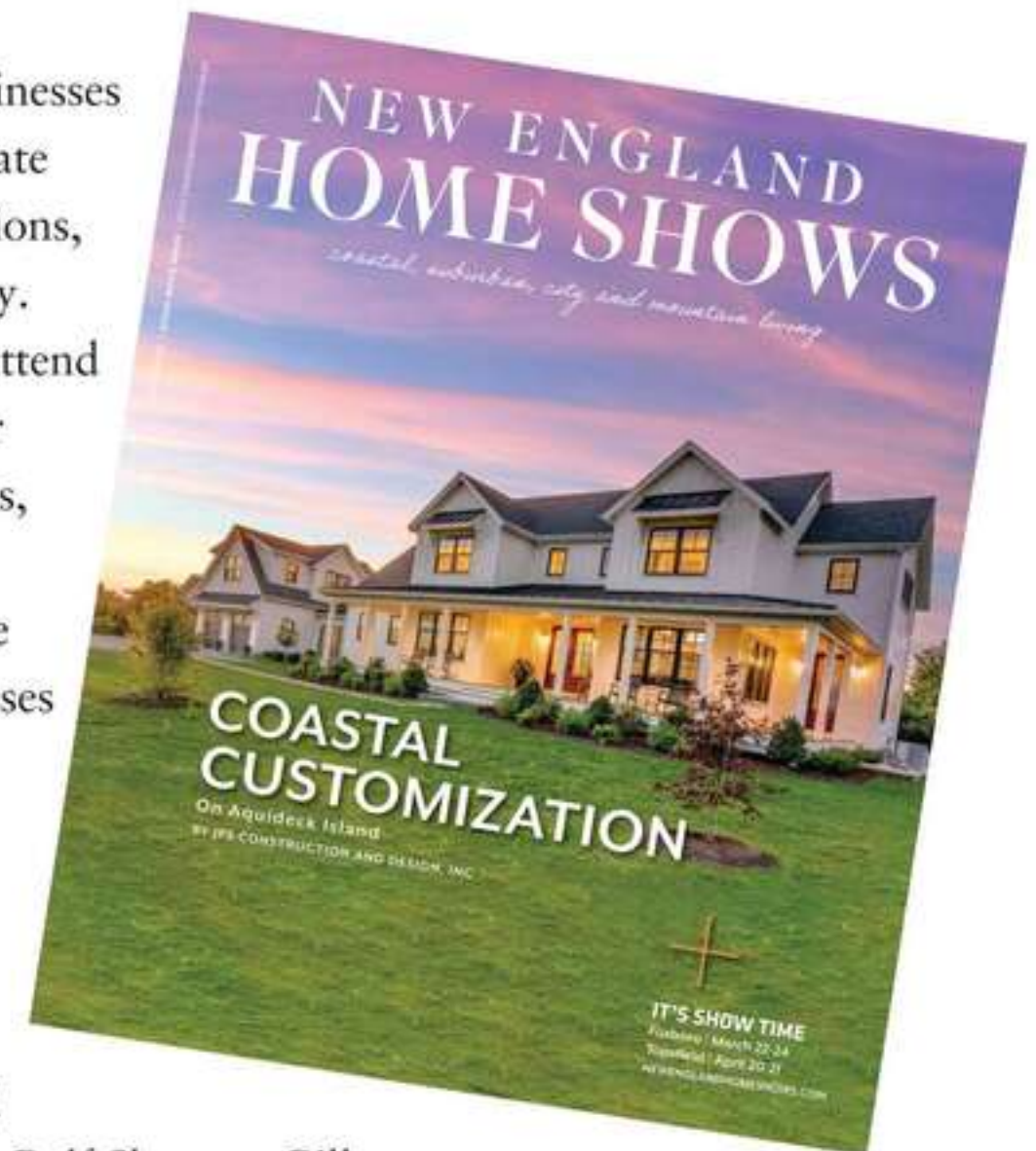
Our team is constantly finding new ways to increase readership and expand opportunities for our advertisers and supporters. The natural transition of our title from Coastal Home Life to New England Home Shows, "Coastal, Suburban, City and Mountain Living" will open vast opportunities to expand and grow our multimedia platform. It is our mission at HGL Media and Castle Events to expand our consumer and business reach as much as possible to continue to provide the very best publications and digital products to an ever-expanding marketplace.

*Timothy R. Branco*

Timothy R. Branco

Editor,

*New England Home Shows Magazine*



Submit Your News & More at:  
**NEWENGLANDHOMESHOWS.com/Submit**



# NEW ENGLAND HOME SHOWS

## *coastal living*



### **Tiverton, RI**

Modern new construction water-view estate home overlooking Sakonnet River East Passage  
**Renee Welchman**  
401.635.8887

## *suburban living*



### **East Greenwich, RI**

Private Custom estate home on 4 acres of land in sought after, "The Estates at High Hawk"  
**The Gammons Team**  
401.742.6050

## *city living*



### **Providence, RI**

One of a kind city estate home meticulously renovated set on almost 1/2 acre in the heart of Providence  
**Residential Properties**  
401.864.8286

## *mountain living*



### **White Mountains, NH**

Custom Design Resort Living Homes at The Owl's Nest Resort  
[www.waterscapesnh.com](http://www.waterscapesnh.com)

# P4N

## *Planning 4 Now*

We understand the challenges families and business owners face today. From managing debt to saving for college to retirement, these personal finance challenges can be overwhelming. Our commitment is to utilize all our resources to help you pursue your goals.

**LET'S PLAN FOR NOW SO YOU CAN ENJOY LIFE LATER!**

*Christopher* **PELLETIER**

Financial Professional

401-595-0194 | [cpelletier@gorrafinancial.com](mailto:cpelletier@gorrafinancial.com)



**GFG**  
Gorra Financial Group

One country. One mission.  
One Group





### 40 Pheasant Drive, East Greenwich, RI

Incredible 4 to 6 bedroom, 4.2 bath Malm Built home in the desirable Estates at High Hawk. Set on a pristine landscaped 2-acre homesite with total privacy. Recent updates include a new chef's kitchen, new bathrooms, fresh paint, and recently refinished beautiful hardwood floors. Spring is nearly here and the pool, cabana, and putting green will be where you want to spend your leisure time as the seasons change and the glorious warm days of summer begin. A short distance from I- 95 North and South, Top Schools, and only 20 Minutes to the best beaches in the Country. The finished lower level offers a guest suite with bedroom, bath, and living room. Floorplan flexibility will allow for multiple home office options. Nearly 5,500 sq.ft. finished beautifully and with only the finest quality upgrades. The 3-car garage also boasts a huge unique walk-up loft storage area that will excite any garage lover! \$1,890,000



### 5 Sparrow Lane, East Greenwich, RI

Private custom estate home nestled on a 4-acre cul-de-sac lot in the highly sought-after 'Estates at High Hawk.' This Malm built home blends contemporary flair with a flexible & open floorplan. With 5 beds, 5 full, & 2 half baths, this home offers ample space for comfortable living. Step inside to soaring vaulted ceilings with an abundance of natural light streaming through the floor-to-ceiling windows. The main level boasts a sunroom, a butler's pantry, and a luxurious primary suite with an adjacent office and a private coffee terrace. Outdoor enthusiasts will love the captivating stone accents, multiple entertaining areas, including bluestone and paver patios, fire pit, built-in gas grill, & a heated inground pool with a pool house bar, kitchen, and bath.

The meticulously maintained garden areas provide a peaceful oasis, ensuring total privacy. The finished walkout basement offers endless possibilities, including an in-law suite with a full bath and a convenient kitchenette/wet bar, and an additional 1200 sq. ft. of ready-to-use space. The second-floor features 4 bed & 3 baths, with potential for expansion into the unfinished attic area. Notable upgrades include a new roof, a cutting-edge high-tech Tesla solar system that provides 100% of the home's energy needs while generating additional income by selling back to the grid. Other updates include a new 200-amp service, bluestone front walkway, fresh paint, new appliances, updated carpets, and newer lighting fixtures. \$1,725,000

Listed by Allen Gammons: 401-742-6050 / [Allen.Gammons@commonmoves.com](mailto:Allen.Gammons@commonmoves.com)





### 135 Pine Glen Drive, East Greenwich, RI

The unique floorplan of this 3 bedroom, 3 bath town home offers a bonus guest suite with private entrance, full kitchen and bath in the walkout lower level. Hardwoods throughout, first and second floor bedroom suites both with new designer quality bathrooms with custom walk-in showers. The newly updated gourmet kitchen with newer appliances, custom cabinetry, and quartz counters. A bonus loft for family-room, tv room or office off the primary bedroom. Multiple private deck and patio areas, and 2 car garage. The sellers have also created a perennial garden area in the private side yard. \$669,900

### 672 Main Street, East Greenwich, RI

Enjoy the best of the Hill and Harbor District and downtown East Greenwich in this spacious 3-bed Townhome. A rare end unit located offering 2 levels of luxurious living. The main floor has an open floor plan with plenty of natural light, hardwood floors with cherry inlay, custom millwork, built-ins, and a large chef's kitchen with stainless appliances, granite countertops with center island seating, and a separate eating area. The primary bedroom suite includes a tiled bath with a double vanity, whirlpool bath, and large separate shower. Easy access to shops and restaurants, marinas, yacht club, and newly approved town Pickleball courts, and more. This property is on the bus line, minutes to the train and airport, and 20 minutes from South County Beach and downtown Providence. \$559,900



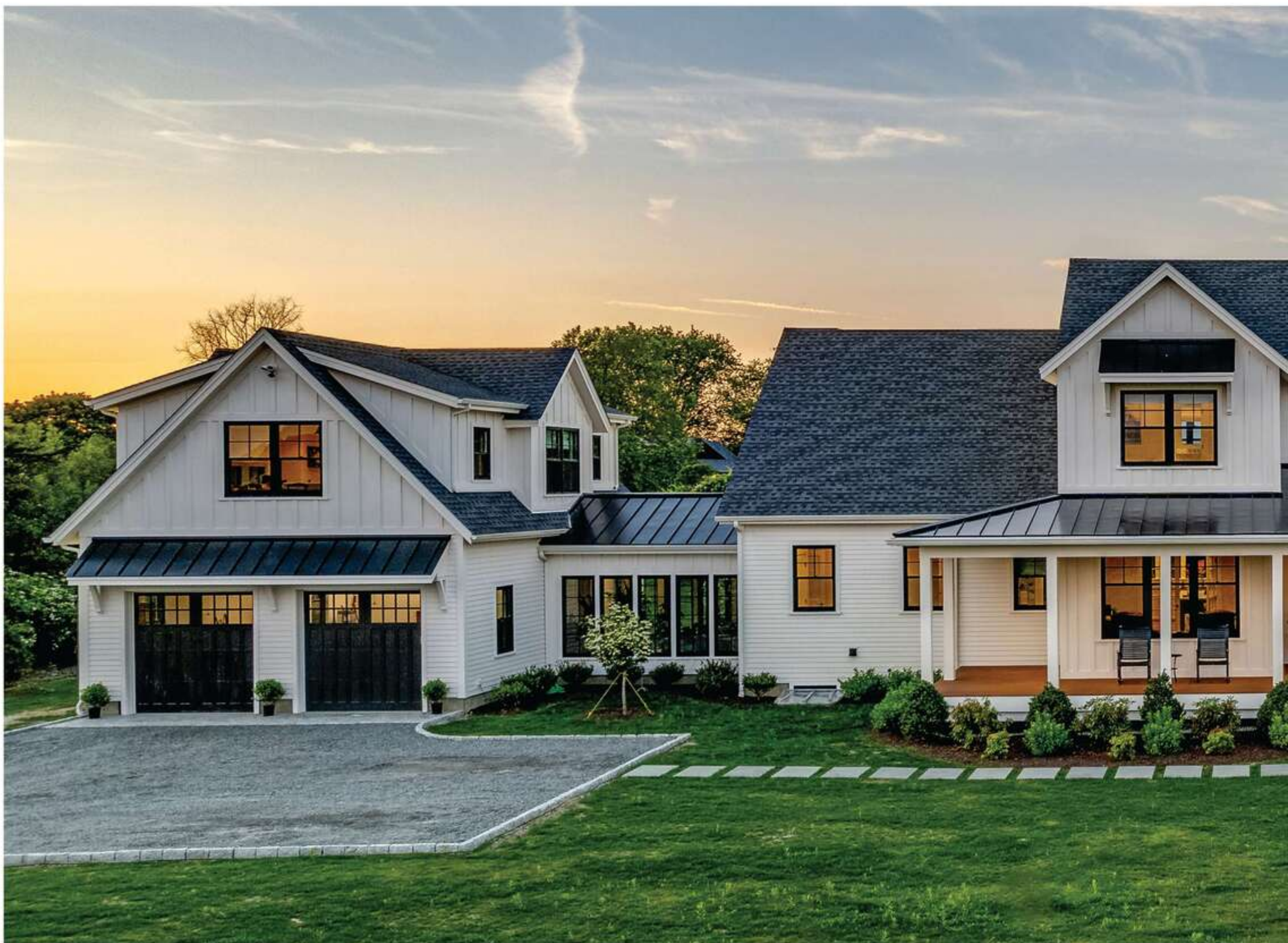
### The Residences at Middleberry ONLY 3 UNITS LEFT

#### 16 & 18 Middleberry Lane, East Greenwich, RI

Our community is almost complete, and we have available two Duplex's under construction with 2,200 sq ft of living space with a 2-car garage and 1 unit with 1,875 sq.ft. and 1-car garage. Now is the time to view the development and reserve your new home and fully customize it to your style. There is a lot to love in this active adult community, nestled in the lively heart of East Greenwich. The first floor unfolds with an open-concept design that seamlessly connects to an impressive stainless-steel kitchen, a gathering room with a gas fireplace, and a master suite with a walk-in closet with an oversized master bath with a walk in shower. Step outside the main level to a covered porch and open patio. Upstairs, is another spacious bedroom, full bathroom, and a versatile lofted space and multiple storage spaces and a linen closet Just minutes away from golf courses, marinas, downtown East Greenwich's dining and shopping, I-95, and T.F. Green Airport. \$800's







# CREATING AND CUSTOMIZING IN NEW ENGLAND FOR OVER A DECADE

*JPS Construction's unique approach to  
designing and building new homes is  
turning dreams into a reality.*

Since 2012, JPS Construction and Design has completed hundreds of projects all over New England, ranging from small residential projects to large commercial projects. Based in Middletown, Rhode Island, JPS offers a wide range of services such as new home construction, renovations, additions, remodeling, design services, and much more. Focusing on highly customized design, JPS is a company that prides itself on premier design, management and craftsmanship.

Owner and Founder, Jamie Stebenne is a licensed contractor in both Rhode Island and Massachusetts. He graduated from Roger Williams University in 2008 from their five-year program with a degree in architecture and a minor in construction management. Jamie is still very hands on and heavily involved in a majority of the construction projects from estimating to completion of the





◀ The Front Exterior of this project has some great highlights which includes the extensive deck area and beautiful landscaping.

3D BIM software bringing 2D plans to life. Throughout the design process our estimators are providing real time cost evaluations to ensure constructibility is staying within the clients budget. Having the design team, estimators, and project managers all working collaboratively within the same office is what makes JPS Construction and Design exceptional and a top design-build company on Aquidneck Island.

A Project Manager is selected early in the design process to work with the design team keeping the project's budget and constructibility in mind. They play a key role in the overall advantages to a design and build approach including faster project delivery, better collaboration within the project team, and accurate project budgets with a defined scope of work. The primary role of the Project Manager is to communicate with all trades involved and keeping the client up to date on the project schedule and overall project budget. Project schedules are set with completion timelines to ensure project progress is consistently being made. The Project Managers guidance in each phase of the design and build process will help the client set a clearer vision, make better selections and stay within budget.

The JPS Field Crew is evident before any tools come out at the job. Protection is a critical first step in any construction project to safeguard surfaces, furniture and anything that they do not need to touch in your home. They take extreme precautions to protect floors, countertops, and whole rooms as needed, included newly installed items as the project progresses. These extra measures help ensure a beautifully finished job while minimizing the punch list and warranty work at the end.

builds. Jamie is on the Board of Directors for the Rhode Island Builder's Association and was honored by Providence Business News "40 Under 40" in 2021. Today, the company averages 50 employees with up to 30 of them working in the field on job sites and an office team which includes a licensed architect, designers, estimators, project managers, finance and human resources, as well as their own in-house marketing.

The Design Team at JPS Construction and Design takes great pride in their ability to take on projects of all sizes. They are trained in both architecture and interior design, giving them the ability to design a home or space of any style. They have experience designing large fully custom homes all the way down to smaller projects such as custom built-ins and cabinetry. The designers start with sketches and eventually input these ideas into

As one of the top luxury home builders in their market, JPS is often asked to change ordinary spaces into 'customized' representations of a client's personality or lifestyle. Whether it's molding and trim, wood surface patterns, an ornate stairway, an outdoor living space, or hand-built cabinetry, JPS has the skilled people to make it a reality. Often a client isn't sure what they want in an odd nook or for a dressing room vanity, but once the project begins to take shape, they gain clarity. The JPS design team can suggest and draw beautiful custom built-ins for your unique space, and their expert finish carpenters can turn that into a centerpiece of your new room. These in-house capabilities allow the Project Manager to execute a quick turnaround, without having to wait weeks for outside providers to deliver. JPS Construction and Design's business has been built on referrals from existing clients and other industry professionals,



and they are very proud of the more than one hundred clients who continually return to them for additional work on their homes and workplace. All of their clients and projects have one common theme, and that is they require an extremely high level of quality in their custom-designed building project. This is accomplished by listening to the clients' goals and concerns, paying attention to every detail to incorporate these specific ideas in their project, and employing the very best skilled workforce, from carpenters to subcontractors available to perform the work and finish the project with full client satisfaction.

JPS has built their business in and around the Newport, RI area, though their clients have brought them all over Rhode Island including Barrington, Warren, Bristol, Tiverton, Little Compton, Jamestown, and from North Kingstown to Westerly on the other side of the bay. In Massachusetts, they have completed beautiful projects locally in Seekonk, Rehoboth, Swansea, Somerset and Southeastern MA including Dartmouth, Westport, Mattapoisett, Marion and on Cape Cod. To the north, JPS signs have been spotted on commercial and residential projects in Newton, Wellesly, Marlborough and other Metro-West communities. This sizable geography has provided them with the opportunity to put their fifty plus skilled team members to work on a variety of projects, including historically significant homes, seaside cottages, large Nantucket style colonial homes, condo projects, contemporary designs, boutique retail outfits, and custom commercial applications like medical offices, spas and golf facilities. JPS is a member of the Greater Newport Chamber of Commerce, RI Builders Association and the Aquidneck Business Connections. In 2019, JPS was named one of the Top 15 Builders in Rhode Island by General Contractor Magazine. JPS is also proud to be the exclusive firm selected to design and build the HGTV Dream Home 2021 in Portsmouth, RI. This complex

design and build project was completed from start to finish within seven months during a pandemic in 2020 and has been viewed by millions of hopeful entrants to the HGTV Dream Home Giveaway. With success like that, JPS is ready to meet your needs for home or business construction services wherever you are located, and no matter what your unique project involves. JPS Construction and Design is certain you will appreciate the thoughtful, transparent and client-centric process employed by them and the entire team.

### ***Coastal Modern Farmhouse***

One of JPS Construction and Design's recently completed new construction projects is a quintessential example of our design & build process. Having worked on the clients previous home, these clients came to us with a purchased lot and a vision for their future home. They spent countless hours with our design team tailoring every space and detail to their exact needs. Our design team started with multiple rounds of hand drawn sketches, proceeded with full construction documents and ended with a full 3D BIM model.

This new construction home in Middletown, RI was located on a beautiful piece of property with 360 views of natural tree lines. Arriving at the home, you are invited in with an extended crushed bluestone driveway outlined in Belgian blocks and low voltage landscape lighting. The large covered front porch serves as both a farmhouse necessity and a calm sitting area peaking views of St. George's Chapel. Traditional aspects such as white clapboard siding and asphalt roofing combine beautifully with the modern white board and batten siding and standing seam metal roofs. The black aluminum fenced in backyard of the home allows protection for the rear patio with steps down to an in ground pool. The hardscaping includes bluestone patios, blue-



◀ The newly constructed In-Law Suite on the second floor includes a bedroom, bathroom, and kitchen area that's perfect for guests staying over the night.

◀ The Pergola on the backyard patio which leads out from the family living room, allows for plenty of shade on those hot summer afternoons.





▲ The First Floor of the new home is an open concept floor plan and it is loaded with plenty of windows to allow in tons of natural light throughout the day.

stone wall caps, bluestone stepping stones and 6" natural stone veneer. Cedar accents are highlighted with a perfectly executed pergola above the patio and outdoor shower.

The interior of the home presents a completely open concept with large 10' ceilings and a double height living and dining area that steps out to the rear porch. The master suite was designed to be oversized with both a master bathroom, master walk in closet and having steps down to the pool patio. The in-home office located directly adjacent to the kitchen showcases a full wall of walnut bookshelves with accent lighting. The second floor bedrooms were framed for vaulted ceilings with a hallway that views down into the living room. Separating the main home from the garage space is a unique greenhouse with windows that span the facade for maximum sun exposure. Located above the garage is an in-law suite that includes a living space, dining space, kitchenette, bedroom, bathroom and laundry facilities. Distant ocean views can be seen during certain times of the year along with breathtaking sunsets in this in-law suite.

The end result was a one-of-a-kind home that showcases the thoughtfulness and careful craftsmanship that goes into every JPS project. "The entire JPS organization's experience and performance were awesome, led on a daily basis for over a year, by an exceptional Project Manager - Dominic as well as outstanding contributions by the design team led by Sue." The team work between the designers, field crew, and project manager contributed to the achievement of building a custom modern farmhouse that was completed on time and within the client's budget. There is no strict secret recipe for the success that JPS Con-



▲ The Rear Exterior offers beautiful masonry which leads up to the stunning in-ground pool and also presents a newly-finished outdoor shower.

struction and Design has enjoyed. There are many components, usually hundreds of varied details in each custom project, just a few of which we have highlighted above, that all come together under the skilled eye of the JPS Team. Given their desire to produce uniquely finished homes and commercial spaces using interesting and well-crafted materials, and employing an experienced workforce of craftsmen, JPS delivers on its promise to complete high-quality projects that delight their customers and make a transformative impact in the communities where they work. They are certain that you, as their client, will enjoy the process of working with the JPS Team, seeing your project come to life, and enjoying its use for years to come.

**Photography:**  
RI Comerical Imaging

**For Project Inquires Please Contact:**  
JPS Construction and Design, Inc.

88 Valley Road, Middletown, RI  
401-619-1260  
jpsconstdesign.com  
Follow JPS on Social Media:  
@jpsconstdesign



# livingin

Newport County, RI

BY TIMOTHY BRANCO



## A SPECIAL SLICE OF LIFE

*Living & Travel in the Ocean State*

In the 1500s, the Narragansett Indians settled in what today is called Newport County, Rhode Island. The region's coastal shorelines provided prime farming and hunting and easy access between the islands by small watercraft. Today this region is home to some of the very best living communities in New England.



## LIVING IN *newport country, ri*

**RHODE ISLAND** is the smallest state in the U.S. The state's nickname, "Ocean State," refers to the over 400 miles of coastline along the Atlantic Ocean and Narragansett Bay, New England's largest estuary. Newport County, part of Rhode Island's East Bay is a very special place with small quaint coastal towns nestled along Narragansett Bay. These seaside communities are all about spectacular New England coastal living. The traditions, the food, the ambiance, and the flow of life are very special. The rhythm of the daily tides, the taste of salt in the air, and the presence of the sea are settling to the soul and a vital part of living here. Newport County is home to the famous "City by the Sea," Newport RI, and 6 smaller communities, Jamestown, Middletown, Portsmouth, Tiverton, Little Compton, and Prudence Island. Of the nearly 86,000 residents in the county, more

than 60,000 reside on Aquidneck Island in Newport, Middletown, and Portsmouth.

### **AQUIDNECK ISLAND**

Aquidneck Island is home to Portsmouth, Middletown, and Newport and is where most of Newport County's population lives. It is connected to the rest of Rhode Island by a series of bridges in Newport and Portsmouth. In the East Bay region of Rhode Island, there are nearly 30 bridges connecting communities, crossing waterways, and providing access to various regions.

### **NEWPORT**

Tourism is huge for Newport, each year over 2.5 million people visit this historic seaside city. Newport has over 3000 hotel rooms, hundreds of summer rentals, and nearly 1000 seasonal residences. On summer weekends not counting special events, Newport can

swell to over 100,000 visitors. There are 15 stately mansions you can visit and hundreds of estate seaside homes along the 12-mile Ocean Drive which begins on Bellevue Avenue and ends in downtown Newport. The mansions of Newport - originally called "cottages" - were built as summer homes in the 1850s to 1900 by wealthy tycoons of New York and Philadelphia. Now the massive estates of Rosecliff, Mansion, The Marble House, The Breakers, The Elms, Rough Point, and more, are open to the public, offering fascinating and informative tours. Special events, parties, balls and performances, are presented during summer, fall, and the Christmas season. The magnificent Newport Flower Show takes place yearly at Redcliff Mansion. With over 100 restaurants and thousands of hotel rooms, people flock to Newport for the celebration of summer fun from all over the Northeast.

*The Breakers*



*Newport*



*Bowens Wharf*



*Jamestown*







*Little Compton*

## MIDDLETOWN

Central on Aquidneck Island, Middletown serves as the island's shopping district. Beautiful waterfront homes and estates cover the shorelines to the east and west offering spectacular water views. Middletown is also home to Second Beach and Third Beach, two of the best beaches in the East Bay. Middletown's agricultural history shows itself in low stone walls that date back decades in the many orchards, farms, fruit stands, vineyards, and nurseries that continue Middletown's agricultural tradition. Newport Vineyards is a popular historical attraction in Middletown and is open to tours and farm-to-table dining. Middletown's wildlife refuges such as Norman Bird Sanctuary, a 325-acre refuge, and Sachuest Point Nature Preserve, a 242-acre refuge, offer miles of hiking trails, stunning scenery, programs for children and adults, and unspoiled natural habitat. The town is a haven for boaters and water enthusiasts, with great fishing, surfing,



*Jamestown*

pristine beaches, and great marinas.

## PORTSMOUTH

Historic Portsmouth is a thriving community with lovely coastal neighborhoods. The town spans the entire northern half of Aquidneck Island as well as the neighboring islands of Prudence

Island, Patience Island, Hog Island, and Hope Island. It is surrounded by Narragansett Bay and the Sakonnet River and covered in rolling green farmland, parks, and peaceful neighborhoods. Portsmouth is home to the headquarters of US Sailing and the Newport International Polo Series. The Aquidneck Club is a



## LIVING IN *newport country, ri*

prestigious golf and sporting club in Portsmouth, and Montaup Country Club also has an 18-hole course that is open year-round with spectacular bay views. Other attractions include the Green Animals Topiary Gardens, Newport Car Museum, several local vineyards, and numerous farm stands where you can buy fresh produce or pick your own seasonal fruits. Portsmouth also has a great selection of restaurants, cafes, and bars.

### JAMESTOWN

Located on Conanicut Island in Narragansett Bay, Jamestown is an island community that has retained much of its rural charm with only year-long residents. Most Jamestown homes are owned by summer vacationers. On this quaint little island that's just nine miles long by one mile wide, you will find several working farms, historic properties, two waterfront state parks, and many points at which the waterfront can be accessed. Jamestown is a beautiful island community connected to the Rhode Island mainland by the Jamestown-Verrazano Bridge to the west, and to Aquidneck Island by the Claiborne Pell/Newport Bridge to the east. Jamestown homeowners and visitors alike enjoy the Jamestown Yacht Club, a scenic 9-hole public golf course, public and private beaches, and a wide variety of delightful

homes and properties. Either end of Jamestown contains a scenic lighthouse, with Conanicut Island Lighthouse located on the northern tip at Conanicut Point, and Beavertail Lighthouse located on the southernmost Beavertail Point in Beavertail State Park — complete with an aquarium and historical museum for visitors to enjoy.

### The Secret Coast of Rhode Island

The Secret Coast of Rhode Island is located along the shores of the Sakonnet River and Atlantic Ocean and includes the communities of Tiverton and Little Compton. The long drive out to Sakonnet Point is the road less traveled, but always well worth the drive to one of Rhode Island's most pristine secluded regions.

## RHODE ISLAND: RICH IN HISTORY, FOOD, CULTURE, EDUCATION & JOBS

Rhode Island's economy is largely driven by healthcare and education, with thriving sectors in maritime research and manufacturing. Providence, the state's capital, boasts a vibrant food scene and a creative community, fueled by institutions like Brown University and the Rhode Island School of Design. Living in Rhode Island gives residents a variety of experiences. Explore the opulent mansions of Newport, enjoy clam chowder along Narragansett Bay, or partake in the many cultural events of Providence. Newport County, Rhode Island, is a region rich in history, culture, and natural beauty. Each neighborhood offers a unique lifestyle, from the historic charm of Newport to the peaceful beaches of Middletown.





## LIVING IN *newport country, ri*



### TIVERTON

Sitting on the East Passage of the Sakonnet River, Tiverton is beautifully situated near a tidal strait dotted with moorings and marinas that empties into the Atlantic Ocean. The old town is built on a hilltop and has a small population, making it a peaceful spot that enjoys incredible views of Mount Hope Bay. Kayaking and rowing from the Old Stone Bridge ruins at Grinnell's beach is popular as is the trek south to Fogland Beach along the Sakonnet River. The region is ideal for windsurfing and kitesurfing, Fogland Beach is the best for these sports because it has a long, wide bay that gets great gales and offers spectacular views of the Sakonnet River and Portsmouth. Hikers will find plenty of trails to explore in and around Tiverton. Weetamoo Woods is awash in oak trees and has over seven miles of trails. The Audubon Emilie Ruecker Wildlife Refuge and the Saponet Marsh are both great bird-watching spots. For shopping and dining, Tiverton Four Corners is a quaint historic village with stores housed in 18th-century buildings.



### LITTLE COMPTON

Little Compton has often been referred to as "Rhode Island's Best Kept Secret." It is just out of the way, and people who live here like that just fine. It is truly one of the most quaint and beautiful places in New England. The Historic Commons is the small central village of Little Compton, where a few restaurants, the post office, a church, a school, and real estate offices are located. It is a sought-after northeast summer residence community for those looking for both privacy and ocean-view homes away from it all. Little Compton places a high priority on preserving

open space, agricultural land, and their sandy beaches. South Shore Beach and Goosewing Beach are beautiful, diverse beaches open to the public. The town has been a long-time favorite for elaborate summer estate homes by wealthy families from New York, Washington, and other affluent Northeast metro regions. This unique and small rural community is truly magnificent and offers a feeling of true oceanside living in a very private and secluded region of the state. At Sakonnet Point, the Donald Ross designed Sakonnet Golf Club is one of Rhode Island's most esteemed private golf clubs.



# THE VIEW

## *newport county*

### *best beaches*

1st Beach, Newport  
2nd & 3rd Beaches, Middletown  
Goosewing Beach, Little Compton  
Sandy Point Beach, Portsmouth  
Fogland Beach, Tiverton



### *10 great restaurants*

The Mooring, Newport  
Castle Hill, Newport  
The White Horse Tavern, Newport  
Clark Cook House, Newport  
JB's On The Water, Jamestown  
Newport Vineyards, Middletown  
15 Pointe Road, Portsmouth  
The Public House, Portsmouth  
The Boat House, Tiverton  
The Commons Lunch, Little Compton



### *10 great things to do*

Tour Newport Mansions • Drive The 12-Mile Ocean Drive, Newport • Rent & Stay On Sailboat In Newport Harbor • Shop & Dine Downtown Newport For A Day • Walk The Cliff Walk Along Mansions • Lunch At Newport Vineyards, Middletown • Chowder & Lobster Roll At Castle Hill • Sunset Cruise On The Madeleine, Newport • Drive And Visit Rt 77 Tiverton / Little Compton • Picnic At Fort Wetherill State Park, Jamestown

### *best local eats*

Flo's Clam Shack, Middletown  
Evelyns Drive-In, Tiverton  
Coffee At Coastal Roasters, Tiverton  
Picnic, Newport  
The Pineapple Club Goat Island, Newport  
Wally's Weiners The Copper Club, Newport  
Ben's Chili Dogs, Newport  
Gray's Ice Cream, Tiverton  
Shultz's Snack Shack, Portsmouth  
Kilwins Chocolates & Ice Cream, Newport



**REAL ESTATE PHOTOGRAPHY THAT SELLS!**



**HIRE CHOPY MEDIA FOR YOUR NEXT PROJECT OR LISTING!**

**AERIAL PHOTO & VIDEO, 3D VIRTUAL TOURS, FLOOR PLANS, VIRTUAL STAGING & MORE!**

**401.426.7853 | CHOPYMEDIA.COM**



**NEW CLIENTS!**  
**RECEIVE FREE \$100 ADD-ON**  
visit [www.chopymedia.com/coastal](http://www.chopymedia.com/coastal)





# DISTINCTIVE PERGOLAS

By MKE Development Corp.

**877-372-9653**

[sales@distinctivepergolas.com](mailto:sales@distinctivepergolas.com)

SCAN TO CREATE YOUR  
OUTDOOR OASIS TODAY!



## IMAGINE THE POSSIBILITIES

- SHELTER & SHADE
- GLASS WALLS & SCREENS
- HEATERS & CEILING FANS

pratic

SERVICING: MASSACHUSETTS, CAPE COD, RI, NH, VT, ME

**WWW.DISTINCTIVEPERGOLAS.COM**





YOUR WORRY-FREE OUTDOOR  
EXPERIENCE BEGINS NOW

SUMMIT

[WWW.SUMMITLANDSCAPENH.COM](http://WWW.SUMMITLANDSCAPENH.COM) | 603-787-3148



SCAN AND  
LET'S GET  
STARTED!





NAHB

IBS<sup>TM</sup>



**WINNER**  
**2022 BEST IN SHOW**  
**& MOST INNOVATIVE BUILDING MATERIAL**

# Mortarless. Hassle-Free.

## Nail It with Evolve Stone.<sup>®</sup>

Nailing it on all fronts, Evolve Stone answers the need for a more efficient installation process as the only nailable, mortarless, color-throughout stone veneer that installs up to 10X faster and is a fraction of the weight of most stone siding. Evolve Stone is the first of its kind to look and feel like real stone, while installing with the ease of a finish nailer—eliminating added costs of masonry and specialty training requirements.



Scan the QR code to visit our website  
or call (866) 449-1656 to learn more.





Offering industry-best lead times—shipping in weeks vs. months.



Family-Owned & Operated Since 1978



Award-Winning Home Improvements

Serving Cape Cod, Rhode Island &  
Southeastern Massachusetts



"I would give Care Free Homes 10 stars if I could. I can't say enough about this friendly, family business. Everyone who worked on this project from beginning to end was professional and courteous." - Les H. of Sandwich, MA



Free Quotes & Financing · (508) 997-1111 · [CareFreeHomesCompany.com](http://CareFreeHomesCompany.com)



508-376-5197

[www.oakwoodslandscaping.com](http://www.oakwoodslandscaping.com)  
[sara@oakwoodslandscaping.com](mailto:sara@oakwoodslandscaping.com)





**Voted Best Decking Design Company  
Best of North Shore Winner for FIVE Consecutive Years**



**SEAL-A-DECK creates beautiful outdoor living spaces for you and your loved ones to gather, connect, and enjoy.**



## **OUR SERVICES**

- Deck Restoration & Repairs
- Deck Construction
- Teak Furniture Refinishing
- Maintenance Plans

**CALL OR VISIT US ONLINE TODAY!**



978-440-2668



[www.sealadeck.com](http://www.sealadeck.com)





## TAKING HOME ORGANIZATION TO THE NEXT LEVEL

Whole home organization is a true game changer and can transform your home from a place you live to a place you love. It's a beautiful thing to feel empowered and unburdened in your home. Our talented designers will delight you by maximizing your space and your joy.

Showroom by Appointment in Foxboro, MA  
**781-496-3929**  
[www.tailoredcloset.com](http://www.tailoredcloset.com)

An independently owned and operated franchise.  
 Jason Greenberg - Owner - [Jason.Greenberg@tailoredcloset.com](mailto:Jason.Greenberg@tailoredcloset.com)



## TAKING GARAGE ORGANIZATION TO THE NEXT LEVEL

Premium total garage optimization customized for your home or business. Our designers are local garage experts backed by the strength of a proven national brand. We have completed over 75,000 installations and are considered the #1 leader in garage organization.

Showroom by Appointment in Foxboro, MA  
**617-340-7707**  
[www.premiergarage.com](http://www.premiergarage.com)

An independently owned and operated franchise.  
 Jason Greenberg - Owner - [Jason.Greenberg@premiergarage.com](mailto:Jason.Greenberg@premiergarage.com)





**FROM \$4,999**

**0% FINANCING AVAILABLE**



# **APOLLO**

## **POOLS & SPAS**

**508.923.7381 | [WWW.APOLLOPOOLSANDSPAS.COM](http://WWW.APOLLOPOOLSANDSPAS.COM)**

**8 HARDING ST. LAKEVILLE, MA | OPEN MON. - FRI. 9AM-6PM & SAT. 9AM-4PM**



# travel & leisure

Pickleball

BY JOHN MOLORI



## PICKLEBALL PHENOMENON

*Fosters Sports and Social Interaction*

It has captured the interest of people young and old and is sweeping the country with a growing wave of popularity. No, it is not the Taylor Swift-Travis Kelce romance. I'm talking about Pickleball.



## TRAVEL & LEISURE

### *pickleball*

Pickleball. A sport that is permeating all demographics and sports enthusiasts. Heck, it even has its own professional tours and leagues. In the northeast, there are several indoor pickleball facilities increasing their space and customer base.

Pickleball is a paddle sport akin to tennis, badminton, and ping-pong. It employs a paddle and plastic ball with holes much like a whiffle ball. The game can be played by all ages and skill levels and the rules are relatively easy to learn. As with any sport, there are differing levels of play and skill in competitors.

Southcoast Pickleball in Fairhaven, MA offers all things pickleball including open play where large groups of people come together and share a preset number of courts. They also offer private court rentals, clinics and instruction, as well as competitive games and tournaments.

Owner/operator Adam Rogers talks about the rise in popularity of the sport. "First, the game is easy to learn, so it is easily accessible to people interested in starting.

"Second and perhaps the biggest factor, it's a social sport that people of all ages can enjoy together. We often see families come in, and parents in their 50s and 60s can still compete with their children in their 20s and 30s. There aren't many sports where you can do that."

Similarly, Lil' Rhody Pickleball in North Kingstown, RI has become a destination point for pickleball players. It offers five full-size indoor courts soon to be adding two additional outdoor courts.

Their Bootcamp Pickleball program gets beginners up to speed on the sport. Lil' Rhody also provides lessons and clinics as well as opportunities for players to drop into an open session and play with other players separated into different skill levels. They also have a full pro shop, leagues, and tournaments.

"Pickleball gives you an excellent and enjoyable workout without struggling on a treadmill," says Richard Storti who owns Lil' Rhody with partner Kevin O'Brien. "The whole time, you are laughing and enjoying it.

"The game is very social. You get to interact with a lot of different people, and physically, you feel great after you play. The game provides us all with a better feeling of wellness, and you can improve quickly.

"You just have to be in position, practice, and have some of the basic shots to become proficient. It's not terribly taxing on your upper body and you don't need a lot of muscle to do it. It's just more about finesse and footwork."

In Rye, NH, the New England Pickleball Club (NEPC) is a seacoast pickleball paradise. It provides an array of services for both members and non-members including skill-based social play, competitive ladders, elite coaching in the form of clinics, classes, private lessons, video coaching, and private court bookings.

NEPC has six dedicated fenced in courts, climate-controlled environments, and amenities like showers and lockers. It is open to players of all skill levels.

Owner and head pro David Velardo talks about his entrance into the game and





## TRAVEL & LEISURE

### *pickleball*



the demographics of the sport. “I discovered pickleball during my ten-year stint in California where my passion for the game quickly evolved from a casual interest to a full-fledged pursuit of excellence. My dedication to mastering the sport propelled me to achieve the rank of #27 in the world in the 2020 rankings.

“Our customer base spans a wide range of demographics, welcoming players of all ages and backgrounds united by their passion for pickleball. We cater to every level of play, from true beginners to top amateur and professional players.

“This diversity creates a vibrant community where lower and mid-level players have ample opportunity to interact with, learn from, and aspire to the higher levels of play. Pickleball just works

**“[Pickles is] a community-centric hub where the essence of the sport’s inclusivity and joy is palable.”**

Dustin DeMeritt, Pickles owner

extremely well as both a social activity and competitive sport for all ages and ability levels. Those are the two areas that we focus a lot on at NEPC.”

There seems to be a common philosophy of physical fitness and social interaction among these pickleball havens. In Hanover, MA, Pickles Indoor Pickleball Club offers a state-of-the-art, climate-controlled indoor complex dedicated to ensuring an optimal playing environment all year round.

With six tournament-sized courts and two practice courts, the facility caters to all

levels of play, from beginners to seasoned competitors. Pickles provides Performance Coaching programs, competitive play in leagues and tournaments, and skill advancement with clinics for all skill levels. Their DUPR (Dynamic Universal Pickleball Rating) has allowed the player community to track progress and set new targets.

“Pickles is more than just a pickleball facility. It’s a community-centric hub where the essence of the sport’s inclusivity and joy is palpable,” says Dustin DeMeritt who owns Pickles with wife Lisa. “Our commitment is to provide a comprehensive pickleball experience.

“Our Player’s Lounge and The Kitchen offer a place for our members to relax and socialize, capturing the essence of community that is central to Pickles’ ethos. It’s a place to



## TRAVEL & LEISURE

### *pickleball*

unwind, share stories, and enjoy refreshments after a great game. We've aimed to create not just a place to play, but a place to belong."

While all of these pickleball facilities are thriving amid the sport's increased popularity, they are not standing pat. Southcoast Pickleball plans to add additional courts and kitchen offerings while forming partnerships with area school systems. Rogers is also hosting the 2nd annual Southcoast Championships March 9 & 10 with top players from across New England competing.

Lil' Rhody aims to identify other locations to expand its brand, while New England Pickleball will be opening a second location in Middleton, MA later this year.

Pickles plans on integrating physical therapy and rehabilitation services. The facility is also starting 4-Player Team Leagues using the MLPlay format incorporating men's doubles, women's doubles, and mixed doubles into a cohesive league format.

DeMeritt puts the pickleball mentality into full focus stating, "In the larger picture, we see pickleball's popularity continuing to surge, with more people of all ages discovering the sport each day. As it grows, we anticipate further innovations in gameplay, equipment, and facilities.

"Pickleball fosters a community that values health, wellness, and the pure enjoyment of the sport. We are continually inspired by the stories of connection and transformation that unfold here every day. We believe pickleball is more than a sport. It's a way of life."



Southcoast Pickleball

## THE PICKLEBALL PRO SHOP

### SELKIRK

Vanguard Power Air - Invikta | \$250  
[www.selkirk.com](http://www.selkirk.com)

The Vanguard Power Air Invikta pickleball paddle is the top choice for power players. For players who are looking for maximum spin for controlled, aggressive drives, it features a larger sweet spot than traditional power paddles, allowing for difficult to return shots and superior ball spin. Unquestionably the Invikta most aerodynamic of all Selkirk paddles and is the ideal paddle for singles and tennis players. Available in five colorways.



### SELKIRK

Vanguard 2.0 - Mach6 | \$200  
[www.selkirk.com](http://www.selkirk.com)

Designed for women seeking consistency without compromising power, the Avalee Vanguard 2.0 guarantees reliable paddle response for consistent dinking, making it the ultimate choice for women who demand excellence in every game. The Vanguard 2.0, pairs the unparalleled attributes of speed and consistency with more spin and face durability, making one of the most preferred paddles in Pickleball, even better. The proprietary bi-directional, cross-weave carbon fiber technology achieves a larger sweet spot and longer dwell time. The Gen2 Durable Surface offers wear-resistance that outperforms previous generations. Available in three colorways.

### SELKIRK

Pro S1 Pickleball - 12 Pack | \$35  
[www.selkirk.com](http://www.selkirk.com)

The Selkirk Pro S1 Pickleball Ball is the new standard for consistency and durability. This remarkable creation embodies the very essence of next-generation Pickleball ball technology and is a culmination of our tireless dedication to elevating every player's experience. The Pro S1 Ball features a new, patented design, developed to create a ball with consistent flight, consistent bounce, and superior durability. It also uses seamless rotomolding technology that delivers a perfectly round and balanced ball that plays faster, spins with precision, and has an extended play life. The Pro S1 maintains its shape during indoor and outdoor play, delivering a more enjoyable playing experience.







# WORLD CLASS / WORLD ACCLAIMED

# LOS CABOS

# GOLF VACATIONS

To say that Los Cabos has arrived on the international golf scene is very much understated, Los Cabos has become a global destination for luxury golf vacations. It is very rare for a golf tourism destination to climb to the ranks as one of the very best in the world, Los Cabos is the exception. Los Cabos has been the top golf travel destination for some time now in Latin America, over the last 10 years this world-class luxury golf destination has taken a world stage in international golf travel. In 2014 Jack Nicklaus's new course design, Quivira was named "Best New International Course" by Golf Magazine. In 2017, Los Cabos won the IAGTO award for, "Destination of the Year" in Latin America. In 2022 travel agents worldwide selected Los Cabos Tourism "Best Tourism Office". Again in 2022 Golf Digest awarded its "Editor's Choice Award" to four Los Cabos Resorts. In December of 2023, Los Cabos received "Best Destination in Mexico" in New York by Travel Weekly Readers' Choice Awards. The ultimate accolade on golf's world stage was in 2023 when the PGA Tour chose Los Cabos as the new home for the next five years of The World Technology Championship held at Tiger Woods'



first golf design, El Cardonal, at Diamante Cabo. "Hosting the PGA TOUR tournament in Los Cabos marks a significant milestone for our destination and serves as a testament to the world-class competitiveness of our golf courses on a global scale. Los Cabos is renowned as the golfing hub of Latin America, boasting an impressive array of 18 golf courses set against the stunning backdrop of the desert, mountains, and the sea.



We firmly believe that the PGA TOUR will not only help us showcase the exceptional golf experiences we offer but also highlight the extraordinary beauty and warm hospitality that Los Cabos extends to a worldwide audience. This provides us with an unparalleled opportunity to shine on the international stage, attracting a growing number of golf enthusiasts and travelers,” said Rodrigo Esponda, Director of the Los Cabos Tourism Board.

The destination has become one of the most popular luxury golf destinations in North America and throughout the world. Where the Pacific Ocean meets the Sea of Cortez, bliss exists in the form of fresh mangoes and slow sunsets, unparalleled luxury golf resorts set in subtropical sunshine, on just about every day of the year. If your idea of golf heaven is a diverse array of spectacular courses woven into a dazzling seaside landscape, Los Cabos is the destination for you. Mexico’s premier tourism destination, Los Cabos, is home to some of the world’s most luxurious hotels and resorts, outstanding spas, award-winning restaurants as well as top-ranked golf courses, amazing tours, activities, and adventures. The growing popularity of Los Cabos has gone viral in the golf and luxury travel industry.

Nearly nine years ago Tiger Woods celebrated his first golf course design, El Cardonal at Diamante, a private resort oasis in Los Cabos. The PGA Tour Worldwide Golf Championship was held October 30th through November 5th showcasing the venue to the world. Los Cabos has been recognized as one of the



## TOP 10 GOLF COURSES IN LOS CABOS

- #1 Dunes Course at Diamante Cabo
- #2 El Cardonal at Diamante Cabo
- #3 Nicklaus II in Puerto Los Cabos
- #4 Cabo Golf at Quivira
- #5 Tiger Woods Oasis Short Course
- #6 Chileno Bay Cabo Golf Course
- #7 Cabo Real Golf Course
- #8 Cabo del Sol Ocean Course
- #9 Cabo del Sol Desert Course
- #10 Greg Norman’s Puerto Las Cabos

top destinations for golf enthusiasts, boasting three courses that have been ranked among the world’s best by Golf Digest magazine in its 2022-2023 edition. Los Cabos has also made Golf Digest’s list of “Best Golf Resorts in Mexico” 4 times in the last two years. Topping off the list of this year’s best resorts was Cabo Del Sol, featuring a design by Jack Nicklaus which he described as, “the best golf property I’ve ever seen.” The course features 36 holes spread out along the Sea of Cortez. Embedded within a desert landscape, golfers will have a mix of challenging shots with some of the most beautiful backdrops. Guests can choose to stay on the property in one of several luxury villas and resorts with a long list of amenities.







## ABOUT LOS CABOS

Los Cabos, located at the tip of the 1,000-mile-long Baja California Peninsula, is one of the world's most diverse tourism destinations. Boasting a dramatic desert backdrop nestled between the Sierra de la Laguna Mountain range and coastlines of the Pacific Ocean and Sea of Cortez, Los Cabos is home to award-winning resorts, dynamic wellness experiences, and exquisite culinary offerings often regarded by many as some of the finest tourism offerings available anywhere. A growing list of championship golf courses, rejuvenating spas, and world-renowned sport fishing tournaments add to the destination's unmatched appeal.



Los Cabos now offers a diverse array of options, ranging from public and resort public to semi-private and private courses. It has become a benchmark for playing award-winning designs by prolific architects such as Jack Nicklaus' Quivira, Cabo del Sol Cove Club, Puerto Los Cabos II, Campestre San Jose, Palmilla, El Dorado, to Tom Fazio's Querencia, Tiger Woods' Diamante Cardonal, Davis Love's Diamante Dunes, Greg Norman's Solmar Golf Links, Puerto Los Cabos I, Fred Couples' Twin Dolphin, Robert Trent Jones' Cabo Real, Tom Weiskopf's Cabo del Sol Desert, among a few others.

as the world's first verified travel destination by Sharecare Digital Heath. Scattered across a 20-mile corridor connecting the touristy Cabo San Lucas to the cultural town center of San José del Cabo in the east, nearly 288,000 people call this scenic cape of Los Cabos, Mexico home. Known for its luxury hospitality, exuberant nightlife, and diverse culinary delights, Los Cabos exceeds expectations. Los Cabos boasts a mountain-desert-ocean environment unique in the western hemisphere. It is truly an incredible golf destination that continues to add new courses, new resorts and unlimited activities and amenities.

There are so many things to do in Los Cabos and you can do them safely, without concern. Los Cabos was named by Forbes

**[www.visitloscabos.travel](http://www.visitloscabos.travel)**  
**[@loscabostourism](https://www.instagram.com/loscabostourism)**



# THE GOLF, EPIC.

THE TRIP, EASY.  
BOOKING 2024, EVEN EASIER.



BoyneGolf.com

Getting to BOYNE Golf has never been easier... Whether flying direct from 18 U.S. cities into nearby Traverse City (TVC); or our newly renovated private 5200' airport at Boyne Mountain, our 10 magnificent courses are closer than you think. Call 855.428.7447 to plan your 2024 trip today.





# marketplace

Best Bites

BY BRITTANY RAYBURN



## A COASTAL CUISINE AWAKENING *Down the Cape*



## MARKETPLACE

*best bites*

The Spring season is the season of all things new, where the flowers begin to bloom, the sun begins to shine with the fresh, spring breeze, and the days become longer. This Spring season, make the most of the gorgeous weather by taking a trip down the Cape to enjoy some outstanding restaurants.

### **Leonessa**

**Yarmouth, MA**

**[www.leonessacapecod.com](http://www.leonessacapecod.com)**

Leonessa, located in Yarmouth, Massachusetts, is an Italian-inspired kitchen and bar that features scratch cooking, crafted cocktails, curated wines, and an inviting and welcoming atmosphere. Leonessa is owned and operated by Taylor Amara and Chef Diego Mota, who are husband and wife and have extensive experience in the hospitality industry. Chef Fernando Restrepo, the Executive Sous Chef, works alongside Chef Diego after several years working on multiple projects together, and their brotherly bond shines through Leonessa's food and operation. Check out some of my favorite dishes and drinks from Leonessa.

To start, be sure to try the Prime Beef Steak Tartare as well as the Spanish Octopus Carpaccio. The Prime Beef Steak Tartare is served with a truffle aioli, toasted ciabatta, as well as a brandy mustard. The Spanish Octopus Carpaccio is served with a Confit potato salad, squid ink aioli, crispy Iberian chorizo, as well as sherry pickled mustard seeds.

For entrees, enjoy the Hand Rolled Strozzapreti, the Grilled Prime New York Strip Steak, the Charcoaled Sugarcane Marinated Pork Chop, as well as the "PEIXINHOS Da HORTA" for a side. The



Hand Rolled Strozzapreti is a pasta lover's dream, served with prime beef and veal ragu and marsala roasted wild mushrooms. The Grilled Prime New York Strip Steak is 16 ounces and served with robiola stuffed portobello mushroom and beurre rouge. The Charcoaled Sugarcane Marinated Pork

Chop is served with a sweet potato and cavolo nero, onion ring tempura, as well as a white miso mustard and pork jus. For a side, you will love the "PEIXINHOS Da HORTA," served with Portuguese tempura green and yellow beans, house made ponzu, and a spicy aioli.



## MARKETPLACE

*best bites*

For cocktails, some of my favorites include the Roses and Rouge as well as the Spring in Your Step. The Roses and Rouge is mixed with Lillet Rouge, Maraschino liqueur, Four Roses bourbon, and bitters. And the Spring in Your Step is great for those looking for an extra kick, mixed with jalapeno tequila with macadamia orgeat, pineapple juice, and fresh lime.

### **The Marshside**

**East Dennis, MA**

**[www.themarshside.com](http://www.themarshside.com)**

The Marshside, located in East Dennis, Massachusetts, is a family-friendly restaurant with the goal to make every meal enjoyable for everyone. The Marshside

overlooks the scenic Sesuit Creek and offers a casual dining experience for the whole family. Not only will you get gorgeous views from every window of the restaurant, but you will also feel right at home as you indulge in their delectable food and drink. Check out some of my favorite dishes and drinks from The Marshside.

To start, order the Crispy Fried Burrata to share, which is served with sun-dried tomato pesto that is made from scratch in-house, charred onion, and grilled toast points. For entrees, seafood lovers should try the Local Day Boat Scallops as well as the Baked Haddock. The Local Day Boat Scallops are served with pan-seared scallops, grilled asparagus, mushroom ravioli sautéed

maitake, shiitake mushrooms with onion beurre blanc, and pistachio gremolata. The Baked Haddock is served with a Ritz cracker crust and citrus beurre blanc with confit garlic mashed potatoes and fresh asparagus. If you are not in the mood for seafood, you cannot go wrong with the Short Rib Grilled Cheese, served with pepper jack cheese and caramelized onions, as well as crisped-to-perfection French fries on the side.

For drinks, I love the Spicy Margarita and the Lavender Gin Spritz. The Spicy Margarita is mixed with Tanteo jalapeno Blanco, beauchant, muddled cucumber and jalapeno, fresh lime juice, a splash of agave, and a spicy tahin rim. The Lavender Gin Spritz is served with Empress gin, lavender





## MARKETPLACE

*best bites*

simple, Wycliff champagne, and a splash of lemon, served on the rocks.

### **Five Bays Bistro**

**Osterville, MA**

**[www.fivebaybistro.com](http://www.fivebaybistro.com)**

Five Bays Bistro, located in Osterville, Massachusetts, was established in 2002 and is in the heart of one of the most picturesque villages on Cape Cod. Five Bays Bistro offers modern yet classic food as well as a fun and comfortable atmosphere, and is owned by Jamie Suprenant and Chef Tim Souza, who both grew up in the restaurant business, filling various roles in their families' establishments. Both Jamie and Chef Tim strive to offer an innovative menu that takes

full advantage of fresh local ingredients, together with a carefully selected wine list to complement each dish that is served. Check out some of my favorite dishes and drinks at Five Bays Bistro.

To start, order the Buffalo Cauliflower, the Lobster Mac and Cheese, or the Nashville Hot Fried Chicken Sliders. The Buffalo Cauliflower is served with crispy cauliflower, house made buffalo sauce, as well as whipped blue cheese mascarpone. The Lobster Mac and Cheese is served with fresh Maine lobster as well as cheddar cheese sauce. And the Nashville Hot Fried Chicken Sliders are perfect for sharing, served with buttermilk fried chicken, herb aioli, brioche, pickle, and house hot sauce.

For entrees, try the Salmon, Chicken Marsala, or the Short Rib. The Salmon is served with roasted cauliflower, pine nuts, watercress, and verjus beurre blanc. The Chicken Marsala is served with dried figs, candied walnuts, parmesan risotto, and a blue cheese crumble. And the Short Rib is served with hard cider braised short rib, cheddar, polenta, roasted root vegetables, and pan jus.

For drinks, my favorites include the Espresso Martini as well as the Guava Margarita. The Espresso Martini is mixed with Stolli vanilla vodka, espresso vodka, fresh espresso, and Kahlua. The Guava Margarita is mixed with El Jimador tequila, Cointreau, guava puree, and lime.







401-725-4062

Pawtucket, RI

Scan for Menus



ELEVATED COMFORT FOOD

BBQ • BURGERS • CRAFT COCKTAILS • LOCAL BEERS

FUNCTIONS & EVENTS UP TO 200 GUESTS



[www.BoundaryKitchenBar.com](http://www.BoundaryKitchenBar.com)



THE LARGEST, LONGEST RUNNING & MOST ATTENDED SHOWS IN THE REGION



FREE PARKING  
HUNDREDS OF  
EXHIBITORS  
FREE ADMISSION

2024  
**NEW ENGLAND  
HOME  
SHOWS**  
PRODUCED BY CASTLE EVENTS

OUTDOOR  
LIVING  
ENERGY SAVINGS  
FUN FOR THE  
WHOLE FAMILY

SAVE THE DATES AND ATTEND A SHOW NEAR YOU!

**FOXBORO, MA | MARCH 22-24**

**TOPSFIELD, MA | APRIL 20-21**

FOR TICKETS & TO BECOME AN EXHIBITOR VISIT  
[WWW.NEWENGLANDHOMESHOWS.COM](http://WWW.NEWENGLANDHOMESHOWS.COM)





# THE NEW OWL'S NEST RESORT

## MORE GOLF, NEW HOMES & NEW AMENITIES FOR 2024

### ***Spring 2024 Golf Vacations***

As spring approaches once again, we are preparing for another great season of golf at the Owl's Nest. Our Jack Nicklaus Resort Course is the only Nicklaus course in New Hampshire and one of only four in New England. The course was named #6 best Nicklaus-Designed course by value worldwide by NBC Golf Pass which considered 400+ design courses in 40 states and 45 countries throughout the world. The course at Owl's Nest sits among the magnificent White Mountains, giving golfers the ultimate scenic vistas throughout the season. From the serious to the casual golfer, elevation changes and pristine conditions show off Owl's Nest's charm and challenge. The newly branded Owl's Nest Vineyard Course (formerly White Mountain Country Club) is currently undergoing a course redesign under the supervision of Robert McNeil and Northeast Golf Company. The Vineyard Course will also have a 10-acre vineyard, a new restaurant, function facilities, and new townhomes are also planned at the property. Also underway is The Hoot, a new 9-hole championship course. There will be 45 holes for golf enthusiasts at the resort when completed, the most at any resort in New England.



### ***New Indoor aboutGOLF Simulators***

The Owl's Nest has just opened Slice Woodfire Pizzeria & Sports Bar, featuring 10 wide-screen televisions, and two new aboutGOLF Golf Simulators. aboutGOLF offers the very best in indoor golf technology. Watch your favorite sporting events while playing some of the best golf courses in the world with friends and family. The new sports bar is located adjacent to the resort's main restaurant Panorama Six82, it is rated #1 in the White Mountains by the NH Lodging and Hospitality Association. The vision that has em-



powered the redevelopment of this truly beautiful location has been carefully conceived to create the ultimate vacation and living experience in the Northeast for all seasons and all celebrations of life and family, it is a very special place. The Owl's Nest Resort provides four seasons of amazing vacation experiences and epic second home living in the heart of it all, the White Mountains. Not only is The Owl's Nest the fastest-growing resort in New England, but it is also the perfect serene setting with proximity to all major attractions in the region. The Owl's Nest expansion and extensive ongoing development and growth have now made the facility the largest four-season destination resort in the Northeast. The resort and living community offer a vast array of amenities for every season and unparalleled choices of rental homes, cottages, condos, hotel rooms, and suites to choose from for couples, groups, and families. There are few places anywhere in the Northeast that offer unprecedented choices for golf, four-season vacationing and living, and extensive amenities and recreational opportunities every month of the year. The new Lafayette Lodge has now opened at the resort offering 9 king rooms and 24 double queen-sized rooms.

### **Four Season Fun and Resort Amenities**

The Owl's Nest is truly a full four-season resort so there is never an offseason here at the Nest. The Owl's Nest is home to 25 racquet courts including 8 clay tennis courts, 13 pickleball courts, and 4 radiant heated platform tennis courts. The resort's Lake Harold is the largest man-made recreational lake in New Hampshire. Fishing, boating, swimming, paddleboarding, and other watersports are all offered at the facility. In addition, the resort has added a new Olympic-sized pool and Jacuzzi complex adjacent to the newly completed Boathouse. It currently features an outdoor swimming pool and jacuzzi, boat rentals, indoor and outdoor showers, radiated heat decks, locker room facilities, and beach access, with plans to open a poolside bar and seafood restaurant. The resort's main restaurant, Panorama Six82, is open daily for lunch and dinner, Slice Sports Bar & Pizzeria with games and golf simulators, and Butch's Deli & Provisions for snacks, supplies and lighter fare. If you have gone electric with your ride, there are 10 Tesla superchargers at the resort for quick charging.

### **The Owl's Nest Living Community**

The Owl's Nest master plan organizes the homes around communal outdoor spaces all connected by multi-use trails. At Waterscapes each home is nestled perfectly throughout the resort, giving you spectacular views of the White Mountains. The proximity of the Owl's Nest gives you full access to all the White Mountain's major attractions and tourist areas while living in a quiet private resort community. These new mountain homes offer open floor plans, light-filled homes, designed with luxury features, and modern conveniences for perfect four-season mountain living. [www.waterscapesnh.com](http://www.waterscapesnh.com)



*The Owl's Nest Resort is in New Hampshire's White Mountains, less than two hours north of Boston and one hour from Manchester-Boston Regional Airport. The Nest is situated on 600+ acres with spectacular panoramic mountain and forest views.*

**For more information on Owl's Nest Resort, please visit [www.owlsnestresort.com](http://www.owlsnestresort.com) or call us @603.726.3076**





## Your year-round New England playground, less than two hours from Boston!

With the introduction of Waterscapes, a lakeside retreat featuring new residential ownership opportunities and waterfront amenities, Owl's Nest is now a true four season resort.

### OWL'S NEST BY THE NUMBERS...

# #2

**Pickleball Resort  
Worldwide**

2023 Gold Medal Winner  
*Tennis Resort Online*

# #6

**Nicklaus Golf  
Course Worldwide**

For Design + Value  
*Golf Channel/Golf Pass*

# #1

**White Mountain  
Restaurant**

*NH Lodging + Hospitality  
Association*

### SPORTS + WELLNESS

- NH's acclaimed and only 18 Hole Nicklaus Golf Course
- The largest Resort Racquet Complex in New England, with 13 pickleball courts, 8 red clay tennis courts + 4 year-round platform tennis courts
- Lakeside Yoga
- Golf Simulators
- Driving Range
- Fitness Center
- Fishing, kayaking + tubing on the Pemi River

- Only minutes to the best skiing in the East + snowy White Mountain adventures
- Horseback riding at the Abenaki Farm Owl's Nest Equestrian Center
- SportsNest Golf + Racquets Pro-Shop

### LEISURE

- Outdoor Pool + Jacuzzi
- Swim, boat, stand-up paddle board, and ice skate on Lake Harold
- Lounge and play on Lake Harold Beach
- Playground + BBQ Patio
- Concerts + Special Events

### DINING + FOOD

- Panorama Six82
- Slice Pizza + Sports Bar
- Butch's Brooklyn Deli + Provisions
- Hook Seafood Restaurant + Bar

### FUTURE DEVELOPMENT

- The Hoot Par 3 Short Course
- Bowling, Shuffleboard + Darts
- WaterSpa Restaurant
- Waterscapes Fitness Center + Spa
- Owl's Nest Vineyard Course **Opening for the 2024 Golf Season**





OWL'S NEST  
THE WHITE MOUNTAINS

Now Selling **WATERSCAPES** at Owl's Nest

# FOUR SEASON RESORT LIVING AND WHITE MOUNTAIN HOME OWNERSHIP

We're reimagining mountain life with luxury homes in two distinct lakeside neighborhoods at Owl's Nest Resort, home to NH's acclaimed Nicklaus Design golf course and the largest tennis, pickle, and paddle resort-complex in New England!



## Now Under Construction THE NORTH LAKE HOMES

- Single Family Residences
- Open Concept Floor Plans with 3 - 4 Beds
- First Floor Primary Bedroom Options
- 2 Car Garage
- Mountain, Fairway and Lakeside Views

From the \$900s



## Move-In Ready THE SOUTH LAKE TOWNHOMES

- Attached Townhome Residences
- Open Concept Attached Floor Plans with 2 - 3 Beds
- Cathedral Ceilings
- Oversized 1 Car Garage
- Mountain, Fairway and Lakeside Views

From the \$700s

**MODEL HOME OPEN  
+ HARD HAT TOURS**

Call to plan your visit today!



**WATERSCAPES**  
at Owl's Nest

**OwlsNestResort.com**  
**603-727-4310**  
**WaterscapesNH.com**

The condominium project shown/depicted/referenced is not yet registered or exempted from registration by the New Hampshire Attorney General's Office, and until such time as registration or exemption from registration is ordered, no binding contract for the sale or lease of any unit or other interest therein may be created or entered into.  
©2023 Owl's Nest Resort and Waterscapes. Equal Housing Opportunity





# PATRIOT PLACE

Shop the latest outdoor and interior home selection at our stores!



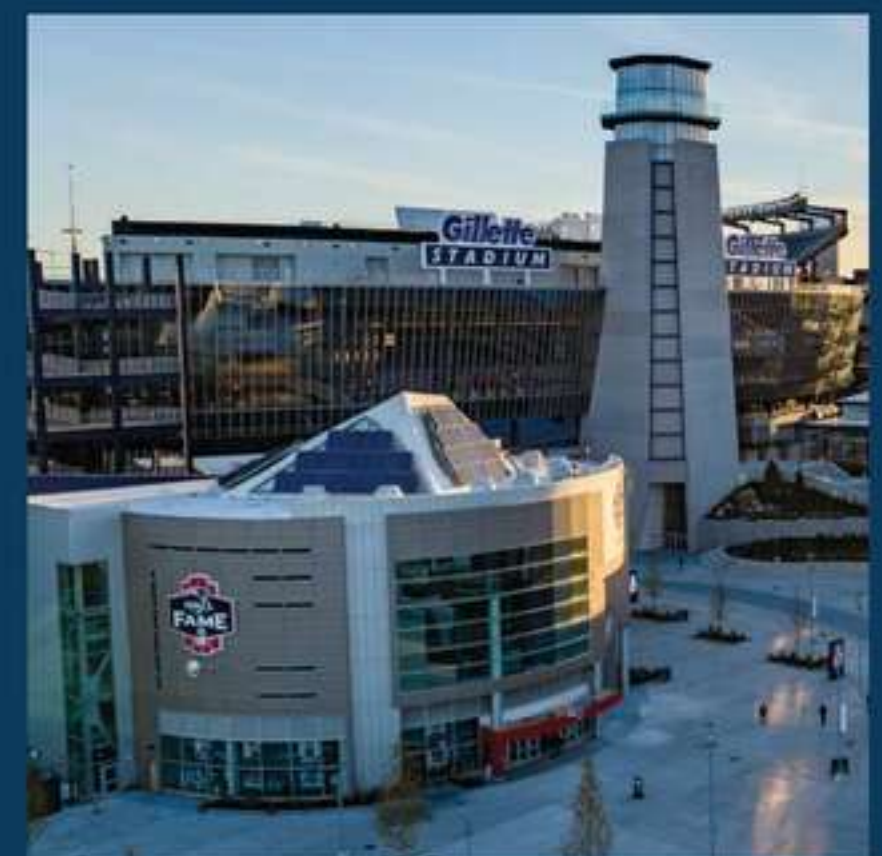
## SHOP...

Bass Pro Shops  
Bath & Body Works  
Express  
Hobby Lobby (*spring 2024*)  
IT'SUGAR  
RH Outlet  
Ulta Beauty  
vineyard vines



## DINE...

Axel & Byrne  
Crumbl Cookies  
Davio's  
Menchie's Frozen Yogurt  
Red Robin  
Saga Hibachi Sushi & Bar  
Six String Grill & Stage  
Tavolino



## ENJOY!

Crazy Axes  
Green Tangerine Spa & Salon  
Helix eSports  
Muse Paintbar  
Red Door Escape Room  
(*summer 2024*)  
Showcase Cinema de Lux  
Splitsville Luxury Lanes



For a complete store, restaurant  
and entertainment directory:

